

**WILCOX UNIFIED SCHOOL DISTRICT NO. 13
COMPREHENSIVE ANNUAL FINANCIAL REPORT
FOR THE FISCAL YEAR ENDED JUNE 30, 2015**

WILLCOX UNIFIED SCHOOL DISTRICT NO. 13

WILLCOX, ARIZONA

**COMPREHENSIVE ANNUAL FINANCIAL REPORT
FOR THE FISCAL YEAR ENDED JUNE 30, 2015**

Issued by:
Business and Finance Department

WILLCOX UNIFIED SCHOOL DISTRICT NO. 13

TABLE OF CONTENTS

| <u>INTRODUCTORY SECTION</u> | <u>Page</u> |
|--------------------------------------------------------------------------------------------------------------------------------------------------|--------------------|
| Letter of Transmittal | i |
| ASBO Certificate of Excellence | vi |
| GFOA Certificate of Achievement | vii |
| Organizational Chart | viii |
| List of Principal Officials | ix |
| <u>FINANCIAL SECTION</u> | |
| INDEPENDENT AUDITOR’S REPORT | 1 |
| MANAGEMENT’S DISCUSSION AND ANALYSIS (MD&A) | 5 |
| BASIC FINANCIAL STATEMENTS | |
| Government-Wide Financial Statements: | |
| Statement of Net Position | 18 |
| Statement of Activities | 19 |
| Fund Financial Statements: | |
| Balance Sheet – Governmental Funds | 22 |
| Reconciliation of the Balance Sheet – Governmental Funds to the Statement of Net Position | 25 |
| Statement of Revenues, Expenditures and Changes in Fund Balances – Governmental Funds | 26 |
| Reconciliation of the Statement of Revenues, Expenditures and Changes in Fund Balances – Governmental Funds to the Statement of Activities | 28 |
| Statement of Assets and Liabilities – Fiduciary Funds | 29 |
| Notes to Financial Statements | 30 |

WILLCOX UNIFIED SCHOOL DISTRICT NO. 13

TABLE OF CONTENTS

| <u>FINANCIAL SECTION</u> | <u>Page</u> |
|---------------------------------------------------------------------------------------------------------------------------------|--------------------|
| REQUIRED SUPPLEMENTARY INFORMATION | |
| Schedule of Revenues Expenditures and Changes in Fund Balances – Budget and Actual: | |
| General Fund | 54 |
| Schedule of Proportionate Share of the Net Pension Liability | 55 |
| Schedule of Contributions | 55 |
| Notes to Required Supplementary Information | 56 |
| COMBINING AND INDIVIDUAL FUND FINANCIAL STATEMENTS AND SCHEDULES | |
| Governmental Funds: | |
| Combining Balance Sheet – All Non-Major Governmental Funds – By Fund Type | 60 |
| Combining Statement of Revenues, Expenditures and Changes in Fund Balances – All Non-Major Governmental Funds – By Fund Type | 61 |
| Special Revenue Funds: | |
| Combining Balance Sheet | 64 |
| Combining Statement of Revenues, Expenditures and Changes in Fund Balances | 70 |
| Combining Schedule of Revenues, Expenditures and Changes in Fund Balances – Budget and Actual | 76 |
| Debt Service Fund: | |
| Schedule of Revenues, Expenditures and Changes in Fund Balance – Budget and Actual | 98 |

WILLCOX UNIFIED SCHOOL DISTRICT NO. 13

TABLE OF CONTENTS

| <u>FINANCIAL SECTION</u> | <u>Page</u> |
|-----------------------------------------------------------------------------------------------|--------------------|
| COMBINING AND INDIVIDUAL FUND FINANCIAL STATEMENTS AND SCHEDULES | |
| Capital Projects Funds: | |
| Combining Balance Sheet | 100 |
| Combining Statement of Revenues, Expenditures and Changes in Fund Balances | 101 |
| Combining Schedule of Revenues, Expenditures and Changes in Fund Balances – Budget and Actual | 102 |
| Agency Funds: | |
| Combining Statement of Assets and Liabilities | 106 |
| Combining Statement of Changes in Assets and Liabilities | 107 |
| | |
| <u>STATISTICAL SECTION</u> | |
| Financial Trends: | |
| Net Position by Component | 111 |
| Expenses, Program Revenues, and Net (Expense)/Revenue | 112 |
| General Revenues and Total Changes in Net Position | 114 |
| Fund Balances – Governmental Funds | 116 |
| Governmental Funds Revenues | 118 |
| Governmental Funds Expenditures and Debt Service Ratio | 120 |
| Other Financing Sources and Uses and Net Changes in Fund Balances – Governmental Funds | 122 |

WILLCOX UNIFIED SCHOOL DISTRICT NO. 13

TABLE OF CONTENTS

| <u>STATISTICAL SECTION</u> | <u>Page</u> |
|--------------------------------------------------------------------------------|--------------------|
| Revenue Capacity: | |
| Primary Assessed Value and Estimated Actual Value of Taxable Property by Class | 123 |
| Secondary Assessed Value of Taxable Property by Class | 124 |
| Property Tax Assessment Ratios | 125 |
| Direct and Overlapping Property Tax Rates | 126 |
| Principal Property Taxpayers | 127 |
| Property Tax Levies and Collections | 128 |
| Debt Capacity: | |
| Outstanding Debt by Type | 129 |
| Direct and Overlapping Governmental Activities Debt | 130 |
| Direct and Overlapping General Bonded Debt Ratios | 130 |
| Legal Debt Margin Information | 131 |
| Demographic and Economic Information: | |
| County-Wide Demographic and Economic Statistics | 132 |
| Principal Employers | 133 |
| Operating Information: | |
| Full-Time Equivalent District Employees by Type | 134 |
| Operating Statistics | 136 |
| Capital Assets Information | 137 |

(This page intentionally left blank)

INTRODUCTORY SECTION

(This page intentionally left blank)



December 14, 2015

Citizens and Governing Board
Willcox Unified School District No. 13
480 N. Bisbee Ave.
Willcox, AZ 85643-1509

State law mandates that school districts required to undergo an annual single audit publish a complete set of financial statements presented in conformity with accounting principles generally accepted in the United States of America and audited in accordance with auditing standards generally accepted in the United States by a certified public accounting firm licensed in the State of Arizona. Pursuant to that requirement, we hereby issue the comprehensive annual financial report of the Willcox Unified School District No. 13 (District) for the fiscal year ended June 30, 2015.

This report consists of management's representations concerning the finances of the District. Consequently, management assumes full responsibility for the completeness and reliability of all of the information presented in this report. To provide a reasonable basis for making these representations, management of the District has established a comprehensive internal control framework that is designed both to protect the District's assets from loss, theft, or misuse and to compile sufficient reliable information for the preparation of the District's financial statements in conformity with accounting principles generally accepted in the United States of America. Because the cost of internal controls should not outweigh their benefits, the District's comprehensive framework of internal controls has been designed to provide reasonable rather than absolute assurance that the financial statements will be free of material misstatement. As management, we assert that, to the best of our knowledge and belief, this financial report is complete and reliable in all material respects.

The District's financial statements have been audited by Heinfeld, Meech & Co., P.C., a certified public accounting firm. The goal of the independent audit was to provide reasonable assurance that the financial statements of the District for the fiscal year ended June 30, 2015, are free of material misstatement. The independent audit involved examining, on a test basis, evidence supporting the amounts and disclosures in the financial statements; assessing the accounting principles used and significant estimates made by management; and evaluating the overall financial statement presentation. The independent auditors concluded, based upon the audit, that there was a reasonable basis for rendering an unmodified opinion that the District's financial statements for the fiscal year ended June 30, 2015, are fairly presented in conformity with accounting principles generally accepted in the United States of America. The independent auditor's report is presented as the first component of the financial section of this report.

The independent audit of the financial statements of the District was part of a broader, federally mandated Single Audit as required by the provisions of the Single Audit Act Amendments of 1996 and U.S. Office of Management and Budget Circular A-133, *Audits of States, Local Governments and Non-Profit Organizations* designed to meet the special needs of federal grantor agencies. The standards governing Single Audit engagements require the independent auditor to report not only on the fair presentation of the financial statements, but also on the District's internal controls and compliance with legal requirements, with special emphasis on internal controls and legal requirements involving the administration of federal awards. These reports are available in a separately issued Single Audit Reporting Package.

Accounting principles generally accepted in the United States of America require that management provide a narrative introduction, overview, and analysis to accompany the basic financial statements in the form of Management's Discussion and Analysis (MD&A). This letter of transmittal is designed to complement the MD&A and should be read in conjunction with it. The District's MD&A can be found immediately following the report of the independent auditors.

PROFILE OF THE DISTRICT

The District is one of 23 public school districts located in Cochise County, Arizona. It provides a program of public education from preschool through grade twelve, with an estimated current enrollment of 1,100 students.

The District's Governing Board is organized under Section 15-321 of the Arizona Revised Statutes (A.R.S.). Management of the District is independent of other state or local governments. The County Treasurer collects taxes for the District, but exercises no control over its expenditures/expenses. Projected enrollment for the 2015-16 school year is 1,150. District schools cover 900 square miles of Southern Arizona and the average age of school structures is 34 years.

The membership of the Governing Board consists of five members elected by the public. Under existing statutes, the Governing Board's duties and powers include, but are not limited to, the acquisition, maintenance and disposition of school property; the development and adoption of a school program; and the establishment, organization and operation of schools. The Board also has broad financial responsibilities, including the approval of the annual budget, and the establishment of a system of accounting and budgetary controls.

The financial reporting entity consists of a primary government and its component units. A component unit is a legally separate entity that must be included in the reporting entity in conformity with generally accepted accounting principles. The District is a primary government because it is a special-purpose government that has a separately elected governing body, is legally separate, and is fiscally independent of other state or local governments. Furthermore, there are no component units combined with the District for financial statement presentation purposes, and the District is not included in any other governmental reporting entity. Consequently, the District's financial statements include only the funds of those organizational entities for which its elected governing board is financially accountable. The District's major operations include education, student transportation, construction and maintenance of District facilities, food services, and athletic functions.

Willcox Unified School District No. 13 is located in the southeastern part of Arizona, about fifty miles from the border of New Mexico, 80 miles from Mexico, and 80 miles from the City of Tucson. The District was formed in the 1940s, by the unification of Willcox School District and Willcox Union High School.

The City of Willcox was founded in 1880 and incorporated in 1915. US Census 2010 reports show the population within the Willcox city limits at 3,757 residents. Willcox is the home of many businesses including Simflo Pumps, a large pump fabricator and manufacturer, and Nature Sweet Tomatoes, the largest greenhouse tomato producer in the world. Nature Sweet is the largest employer in Willcox with approximately 325 employees. Willcox has also become home to vineyards, wineries, tasting rooms and the largest custom crush facility in Arizona, Aridus Wine Company. Coronado Vineyards, Keeling-Schafer Vineyards, Carlson Creek Vineyards, Flying Leap Vineyards, Passion Cellars, Golden Rule Vineyards, Pillsbury Wine Company, Zarpara Vineyard and Aridus Wine Company are all located in Willcox.

The annual expenditure budget serves as the foundation for the District's financial planning and control. The objective of these budgetary controls is to ensure compliance with legal provisions embodied in the annual expenditure budget approved by the District's Governing Board.

The expenditure budget is prepared by fund for all Governmental Funds, and includes function and object code detail for the General Fund and some Special Revenue and Capital Projects Funds. The legal level of budgetary control (that is, the level at which expenditures cannot exceed the appropriated amount) is established at the individual fund level for all funds. Funds that are not required to legally adopt a budget may have overexpenditures of budgeted funds. The budget for these funds is simply an estimate and does not prevent the District from exceeding the budget as long as the necessary revenue is earned. The District is not required to prepare an annual budget of revenue; therefore, a deficit budgeted fund balance may be presented. However, this does not affect the District's ability to expend monies.

FACTORS AFFECTING FINANCIAL CONDITION

The information presented in the financial statements is perhaps best understood when it is considered from the broader perspective of the specific environment within which the District operates.

Local Economy. Tourism plays an important role in the Willcox economy. Several large events are held throughout the year that benefits the community. For example, Wings Over Willcox brings birding enthusiasts from all over the world to Willcox each year to participate in events and view wildlife that can only be seen in the Willcox area. Rex Allen Days is also a large contributor to the tourism industry in Willcox and celebrates one of Willcox's native sons, a famous movie star from years past, Rex Allen. A professional rodeo is held as well as a concert, parade, and many other events. U-pick farms such as Apple Annie's Orchard brings visitors to Willcox to enjoy harvesting their own pumpkins, apples, peaches and numerous other local crops. The wine industry is also becoming a boon to the local tourism industry. Wine tastings and tours of local vineyards are held year round. Inde Motorsports Ranch draws driving enthusiasts from across the world to Willcox where drivers can test their skills on a professional 3-mile road course. Finally, there are several historic sites to visit near Willcox such as Chiricahua National Monument, Ft. Bowie National Historic Site and the historic towns of Bisbee and Tombstone.

While tourism is important, the major contributor to the local economy is the agricultural industry. Nature Sweet is the single largest employer in the Willcox area, but other major farming and ranching companies contribute substantially. A local livestock auction is held weekly, and cattle companies both large and small are all around the Willcox area and keep the ranching tradition alive and well. The impact of local farming has a huge impact on Willcox. Crops such as alfalfa, corn and cotton are grown in the area and orchards of apples, peaches, pecans, and pistachios can be found across the valley. We also cannot forget the newcomer to the area, grapes for the wine industry, and of course the well-established tomato industry with the largest greenhouse in the world right here in Willcox.

Several other established industries contribute to the local economy such as Valley Telecom, a communications firm with headquarters in Willcox. Sulphur Springs Valley Electric Cooperative, the major electricity supplier for all of Cochise County, Arizona Electric Power Cooperative a large power generation plant outside of Willcox and Simflo Pumps a local manufacturer of water pumping equipment. There are also several hotels and restaurants in the area including a new Holiday Inn and Carl's Jr. Restaurant that have opened in the recent past. Willcox has one grocery store, two discount stores, two auto parts stores and a large truck stop. Finally, a large wind farm has started construction just outside of Willcox and should be a large contributor to the local economy in the near future.

Long-term Financial Planning. The District has completed Phase I of a bond building project that saw approximately \$7.0 million in improvements to the District. These improvements included a new high school building, cafeteria expansion at the high and middle schools, and security measures such as fencing at all schools. These initiatives began in 2012 and were completed in 2013. Phase II of the bond offering began in November 2013 in which approximately \$5.0 million in bonds were sold and improvements to the District began in early 2014. These improvements include a new high school gymnasium, improvements to the current gymnasium, additional security measures, and an addition to the agricultural science building. The major components of the bond upgrades have been completed, however, a few funds remain that will be expended on further infrastructure improvements during fiscal year 2016.

Technology is always improving and measures will be taken to insure that the District is up to date in this critical area. Further improvements will also be made in campus security and additional facility needs will be addressed such as a new multi-purpose building at the elementary school, an improved transportation services building, and new busses.

The District's enrollment has remained constant over the past but has fluctuated in recent years and is showing a slight decrease in 2015 at approximately 1,100 students. The District has been rated a B school by the Arizona Department of Education and showed improvement at its middle and high schools.

AWARDS AND ACKNOWLEDGMENT

Awards. The Association of School Business Officials International (ASBO) awarded a Certificate of Excellence in Financial Reporting to the District for its comprehensive annual financial report for the fiscal year ended June 30, 2014. This was the first year that the District received this prestigious award. In addition, the Government Finance Officers Association (GFOA) awarded a Certificate of Achievement for Excellence in Financial Reporting to the District for its comprehensive annual financial report for the fiscal year ended June 30, 2014. In order to be awarded these certificates, the District published an easily readable and efficiently organized comprehensive annual financial report. This report satisfied both accounting principles generally accepted in the United States of America and applicable legal requirements.

We believe that our current comprehensive annual financial report will meet the programs' requirements and we are submitting it to ASBO and GFOA to determine its eligibility for the fiscal year ended June 30, 2015 certificates.

Acknowledgments. The preparation of the comprehensive annual financial report on a timely basis was made possible by the dedicated service of the entire staff of the business and finance department. Each member of the department has our sincere appreciation for the contributions made in the preparation of this report.

In closing, without the leadership and support of the Governing Board of the District, preparation of this report would not have been possible.

Respectfully submitted,

A handwritten signature in black ink, appearing to read "Kevin Davis", with a long, sweeping horizontal line extending to the right.

Kevin Davis
Superintendent/Business Manager

Association of School Business Officials International



*The Certificate of Excellence in Financial Reporting Award
is presented to*

Willcox Unified School District No. 13

*For Its Comprehensive Annual Financial Report (CAFR)
For the Fiscal Year Ended June 30, 2014*

The CAFR has been reviewed and met or exceeded
ASBO International's Certificate of Excellence standards



A handwritten signature in black ink, appearing to read 'M. Pepera', written over a horizontal line.

Mark C. Pepera, MBA, RSBO, SFO
President

A handwritten signature in black ink, appearing to read 'John D. Musso', written over a horizontal line.

John D. Musso, CAE, RSBA
Executive Director



Government Finance Officers Association

Certificate of
Achievement
for Excellence
in Financial
Reporting

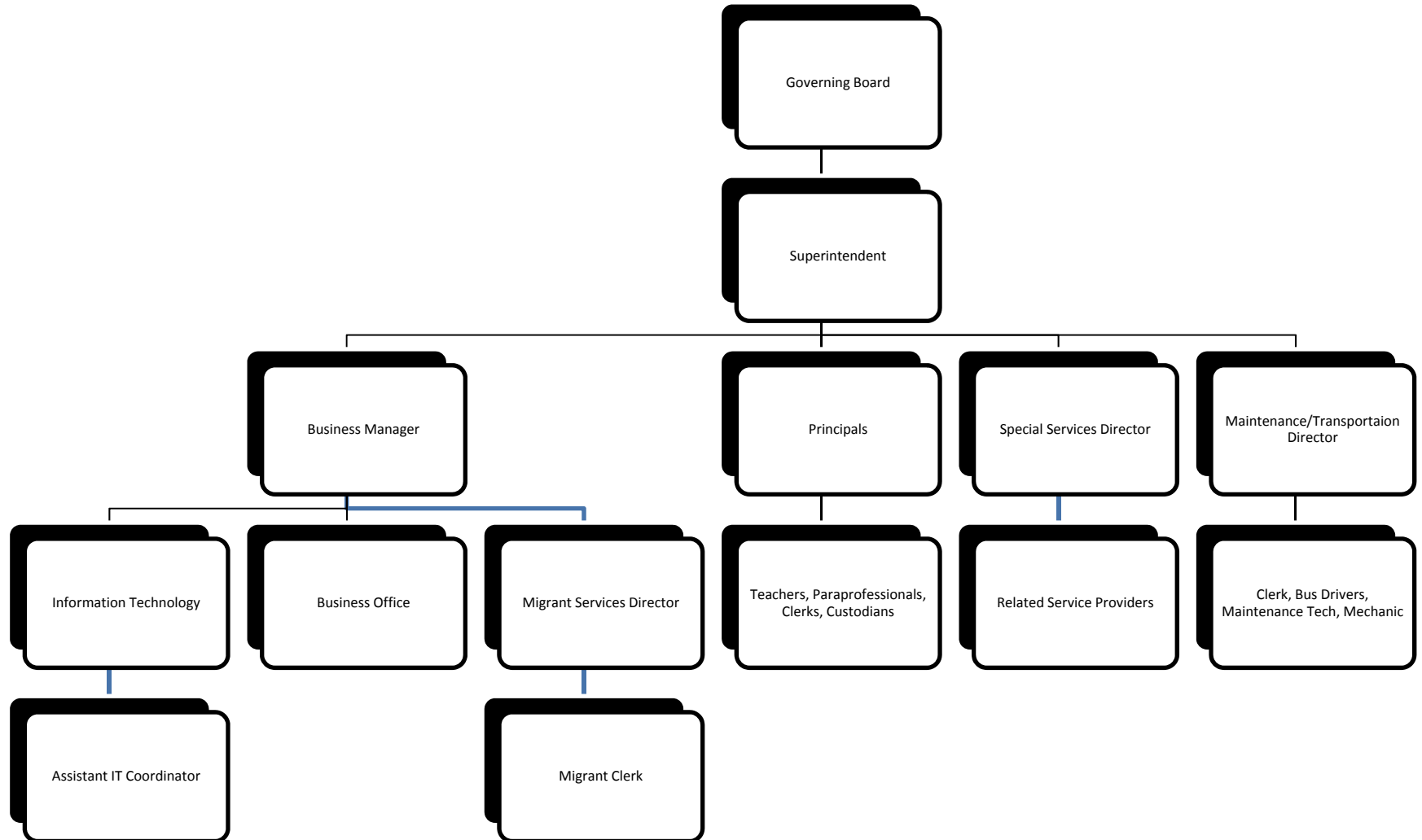
Presented to

Wilcox Unified School District No. 13
Arizona

For its Comprehensive Annual
Financial Report
for the Fiscal Year Ended

June 30, 2014

Executive Director/CEO



WILLCOX UNIFIED SCHOOL DISTRICT NO. 13

LIST OF PRINCIPAL OFFICIALS

GOVERNING BOARD

Bill Nolan, President

Dwayne Owen, Vice President

Gary Clement, Clerk

Debra Ellis, Member

Doris Jones, Member

ADMINISTRATIVE STAFF

Kevin Davis
Superintendent/Business Manager

Jeff Thompson
High School Principal

Mike Patterson
Middle School Principal

Valerie Simon
Elementary School Principal

(This page intentionally left blank)

FINANCIAL SECTION

(This page intentionally left blank)

INDEPENDENT AUDITOR'S REPORT

Governing Board
Willcox Unified School District No. 13

Report on the Financial Statements

We have audited the accompanying financial statements of the governmental activities, each major fund, and the aggregate remaining fund information of Willcox Unified School District No. 13 (District), as of and for the year ended June 30, 2015, and the related notes to the financial statements, which collectively comprise the District's basic financial statements as listed in the table of contents.

Management's Responsibility for the Financial Statements

Management is responsible for the preparation and fair presentation of these financial statements in accordance with accounting principles generally accepted in the United States of America; this includes the design, implementation, and maintenance of internal control relevant to the preparation and fair presentation of financial statements that are free from material misstatement, whether due to fraud or error.

Auditor's Responsibility

Our responsibility is to express opinions on these financial statements based on our audit. We conducted our audit in accordance with auditing standards generally accepted in the United States of America and the standards applicable to financial audits contained in *Government Auditing Standards*, issued by the Comptroller General of the United States. Those standards require that we plan and perform the audit to obtain reasonable assurance about whether the financial statements are free from material misstatement.

An audit involves performing procedures to obtain audit evidence about the amounts and disclosures in the financial statements. The procedures selected depend on the auditor's judgment, including the assessment of the risks of material misstatement of the financial statements, whether due to fraud or error. In making those risk assessments, the auditor considers internal control relevant to the entity's preparation and fair presentation of the financial statements in order to design audit procedures that are appropriate in the circumstances, but not for the purpose of expressing an opinion on the effectiveness of the entity's internal control. Accordingly, we express no such opinion. An audit also includes evaluating the appropriateness of accounting policies used and the reasonableness of significant accounting estimates made by management, as well as evaluating the overall presentation of the financial statements.

We believe that the audit evidence we have obtained is sufficient and appropriate to provide a basis for our audit opinions.

Opinions

In our opinion, the financial statements referred to above present fairly, in all material respects, the respective financial position of the governmental activities, each major fund, and the aggregate remaining fund information of the Willcox Unified School District No. 13, as of June 30, 2015, and the respective changes in financial position thereof for the year then ended in accordance with accounting principles generally accepted in the United States of America.

Change in Accounting Principle

As described in Note 1, the District implemented the provisions of the Governmental Accounting Standards Board (GASB) Statement No. 68, *Accounting and Financial Reporting for Pensions*, as amended by GASB Statement No. 71, *Pension Transition for Contributions Made Subsequent to the Measurement Date*, for the year ended June 30, 2015, which represents a change in accounting principle. Our opinion is not modified with respect to this matter.

Other Matters

Required Supplementary Information

Accounting principles generally accepted in the United States of America require that the Management's Discussion and Analysis, budgetary comparison information, and net pension liability information, as listed in the table of contents, be presented to supplement the basic financial statements. Such information, although not a part of the basic financial statements, is required by the Governmental Accounting Standards Board, who considers it to be an essential part of financial reporting for placing the basic financial statements in an appropriate operational, economic, or historical context. We have applied certain limited procedures to the required supplementary information in accordance with auditing standards generally accepted in the United States of America, which consisted of inquiries of management about the methods of preparing the information and comparing the information for consistency with management's responses to our inquiries, the basic financial statements, and other knowledge we obtained during our audit of the basic financial statements. We do not express an opinion or provide any assurance on the information because the limited procedures do not provide us with sufficient evidence to express an opinion or provide any assurance.

Other Information

Our audit was conducted for the purpose of forming opinions on the financial statements that collectively comprise the District's basic financial statements. The Introductory Section, Combining and Individual Fund Financial Statements and Schedules, and Statistical Section are presented for purposes of additional analysis and are not a required part of the basic financial statements.

The Combining and Individual Fund Financial Statements and Schedules are the responsibility of management and were derived from and relate directly to the underlying accounting and other records used to prepare the basic financial statements. Such information has been subjected to the auditing procedures applied in the audit of the basic financial statements and certain additional procedures, including comparing and reconciling such information directly to the underlying accounting and other records used to prepare the basic financial statements or to the basic financial statements themselves, and other additional procedures in accordance with auditing standards generally accepted in the United States of America. In our opinion, the Combining and Individual Fund Financial Statements and Schedules information is fairly stated in all material respects in relation to the basic financial statements as a whole.

The Introductory Section and Statistical Section have not been subjected to the auditing procedures applied in the audit of the basic financial statements and, accordingly, we do not express an opinion or provide any assurance on them.

Other Reporting Required by Government Auditing Standards

In accordance with *Government Auditing Standards*, we have also issued our report dated December 14, 2015, on our consideration of Willcox Unified School District No. 13's internal control over financial reporting and on our tests of its compliance with certain provisions of laws, regulations, contracts, and grant agreements and other matters. The purpose of that report is to describe the scope of our testing of internal control over financial reporting and compliance and the results of that testing, and not to provide an opinion on the internal control over financial reporting or on compliance. That report is an integral part of an audit performed in accordance with *Government Auditing Standards* in considering Willcox Unified School District No. 13's internal control over financial reporting and compliance.

Heinfeld, Meech & Co., P.C.

HEINFELD, MEECH & CO., P.C.
CPAs and Business Consultants

December 14, 2015

MANAGEMENT'S DISCUSSION AND ANALYSIS (MD&A)
(Required Supplementary Information)

(This page intentionally left blank)

**WILLCOX UNIFIED SCHOOL DISTRICT NO. 13
MANAGEMENT'S DISCUSSION AND ANALYSIS (MD&A)
YEAR ENDED JUNE 30, 2015**

As management of the Willcox Unified School District No. 13 (District), we offer readers of the District's financial statements this narrative overview and analysis of the financial activities of the District for the fiscal year ended June 30, 2015. The management's discussion and analysis is presented as required supplementary information to supplement the basic financial statements. We encourage readers to consider the information presented here in conjunction with additional information that we have furnished in our letter of transmittal, which can be found in the introductory section of this report.

FINANCIAL HIGHLIGHTS

- The District's total net position of governmental activities increased \$1.4 million from a deficit of \$1.1 million to a positive position at year end due to an increase in the property tax levy.
- General revenues accounted for \$9.3 million in revenue, or 77 percent of all current fiscal year revenues. Program specific revenues in the form of charges for services and grants and contributions accounted for \$2.8 million or 23 percent of total current fiscal year revenues.
- The District had approximately \$10.7 million in expenses related to governmental activities, a decrease of one percent from the prior fiscal year.
- Among major funds, the General Fund had \$7.5 million in current fiscal year revenues, which primarily consisted of state aid and property taxes, and \$6.8 million in expenditures. The General Fund's fund balance increase from a deficit of \$965,922 at the prior fiscal year end to deficit of \$202,805 at the end of the current fiscal year was primarily due to an increase in the property tax rate and an increase in state equalization assistance.
- The Bond Building Fund's fund balance decreased \$4.7 million during the fiscal year due to the construction of a new high school gymnasium and agriculture building.

OVERVIEW OF FINANCIAL STATEMENTS

This discussion and analysis are intended to serve as an introduction to the District's basic financial statements. The District's basic financial statements comprise three components: 1) government-wide financial statements, 2) fund financial statements, and 3) notes to the financial statements. This report also contains other supplementary information in addition to the basic financial statements themselves.

Government-wide financial statements. The government-wide financial statements are designed to provide readers with a broad overview of the District's finances, in a manner similar to a private-sector business. The accrual basis of accounting is used for the government-wide financial statements.

WILLCOX UNIFIED SCHOOL DISTRICT NO. 13
MANAGEMENT'S DISCUSSION AND ANALYSIS (MD&A)
YEAR ENDED JUNE 30, 2015

OVERVIEW OF FINANCIAL STATEMENTS

The statement of net position presents information on all of the District's assets, liabilities, and deferred inflows/outflows of resources with the difference reported as net position. Over time, increases or decreases in net position may serve as a useful indicator of whether the financial position of the District is improving or deteriorating.

The statement of activities presents information showing how the District's net position changed during the most recent fiscal year. All changes in net position are reported as soon as the underlying event giving rise to the change occurs, regardless of the timing of related cash flows. Thus, revenues and expenses are reported in this statement for some items that will only result in cash flows in future fiscal periods (e.g., uncollected taxes and earned but unused compensated absences).

The government-wide financial statements outline functions of the District that are principally supported by property taxes and intergovernmental revenues. The governmental activities of the District include instruction, support services, operation and maintenance of plant services, student transportation services, operation of non-instructional services, and interest on long-term debt.

Fund financial statements. A fund is a grouping of related accounts that is used to maintain control over resources that have been segregated for specific activities or objectives. The District uses fund accounting to ensure and demonstrate compliance with finance-related legal requirements. All of the funds of the District can be divided into two categories: governmental funds and fiduciary funds.

Governmental funds. Governmental funds are used to account for essentially the same functions reported as governmental activities in the government-wide financial statements. However, unlike the government-wide financial statements, governmental fund financial statements use the modified accrual basis of accounting and focus on near-term inflows of spendable resources, as well as on balances of spendable resources available at the end of the fiscal year. Such information may be useful in evaluating the District's near-term financing requirements.

Because the focus of governmental funds is narrower than that of the government-wide financial statements, it is useful to compare the information presented for governmental funds with similar information presented for governmental activities in the government-wide financial statements. By doing so, readers may better understand the long-term impact of the District's near-term financing decision. Both the governmental fund balance sheet and the governmental fund statement of revenues, expenditures and changes in fund balances provide a reconciliation to facilitate this comparison between governmental funds and governmental activities.

**WILLCOX UNIFIED SCHOOL DISTRICT NO. 13
MANAGEMENT'S DISCUSSION AND ANALYSIS (MD&A)
YEAR ENDED JUNE 30, 2015**

OVERVIEW OF FINANCIAL STATEMENTS

Information is presented separately in the governmental fund balance sheet and in the governmental fund statement of revenues, expenditures and changes in fund balances for the General, Debt Service, and Bond Building Funds, all of which are considered to be major funds. Data from the other governmental funds are combined into a single, aggregated presentation. Individual fund data for each of these non-major governmental funds is provided in the form of combining statements and schedules.

Fiduciary funds. Fiduciary funds are used to account for resources held for the benefit of parties outside the District. Fiduciary funds are not reflected in the government-wide financial statements because the resources of those funds are not available to support the District's own programs. Due to their custodial nature, the fiduciary funds do not have a measurement focus.

Notes to the financial statements. The notes provide additional information that is essential to a full understanding of the data provided in the government-wide and fund financial statements. The notes to the financial statements can be found immediately following the basic financial statements.

Other information. In addition to the basic financial statements and accompanying notes, this report also presents certain required supplementary information concerning the District's budget process. The District adopts an annual expenditure budget for all governmental funds. A schedule of revenues, expenditures and changes in fund balances – budget and actual has been provided for the General Fund as required supplementary information.

GOVERNMENT-WIDE FINANCIAL ANALYSIS

Net position may serve over time as a useful indicator of a government's financial position. In the case of the District, assets and deferred outflows exceeded liabilities and deferred inflows exceeded liabilities by \$313,978 at the current fiscal year end.

The largest portion of the District's net positive position reflects its investment in capital assets (e.g., land and improvements; buildings, and vehicles, furniture and equipment), less any related outstanding debt used to acquire those assets. The District uses these capital assets to provide services to its students; consequently, these assets are not available for future spending. Although the District's investment in its capital assets is reported net of related outstanding debt, it should be noted that the resources needed to repay this debt must be provided from other sources, since the capital assets themselves cannot be used to liquidate these liabilities. In addition, a portion of the District's net position represents resources that are subject to external restrictions on how they may be used.

**WILLCOX UNIFIED SCHOOL DISTRICT NO. 13
MANAGEMENT'S DISCUSSION AND ANALYSIS (MD&A)
YEAR ENDED JUNE 30, 2015**

GOVERNMENT-WIDE FINANCIAL ANALYSIS

The following table presents a summary of the District's net position for the fiscal years ended June 30, 2015 and June 30, 2014.

| | As of June 30, 2015 | As of June 30, 2014 |
|----------------------------------|------------------------|------------------------|
| Current and other assets | \$ 4,431,191 | \$ 8,757,449 |
| Capital assets, net | <u>20,299,382</u> | <u>15,890,627</u> |
| Total assets | <u>24,730,573</u> | <u>24,648,076</u> |
| Deferred outflows | <u>983,781</u> | |
| Current and other liabilities | 2,501,594 | 2,947,644 |
| Long-term liabilities | <u>21,274,210</u> | <u>13,845,629</u> |
| Total liabilities | <u>23,775,804</u> | <u>16,793,273</u> |
| Deferred inflows | <u>1,624,572</u> | |
| Net position: | | |
| Net investment in capital assets | 7,575,784 | 7,193,206 |
| Restricted | 1,091,776 | 1,480,142 |
| Unrestricted | <u>(8,353,582)</u> | <u>(818,545)</u> |
| Total net position | <u>\$ 313,978</u> | <u>\$ 7,854,803</u> |

At the end of the current fiscal year the District reported a negative unrestricted net position of \$8.4 million as a result of unfunded pension liability. Positive net position was reported in the other two categories. The District's financial position is the product of several financial transactions including the net result of activities, the payment of debt, the acquisition and disposal of capital assets, and the depreciation of capital assets.

The following are significant current year transactions that had an impact on the Statement of Net Position.

- The principal retirement of \$600,000 of bonds.
- The addition of \$5.3 million in capital assets through the construction of a new gymnasium and other school improvements and the purchase of vehicles, furniture and equipment.
- The addition of \$8.2 million in pension liabilities due to the implementation of new pension reporting standards.
- The addition of \$852,798 of accumulated depreciation due to current year depreciation expenses.

**WILLCOX UNIFIED SCHOOL DISTRICT NO. 13
MANAGEMENT'S DISCUSSION AND ANALYSIS (MD&A)
YEAR ENDED JUNE 30, 2015**

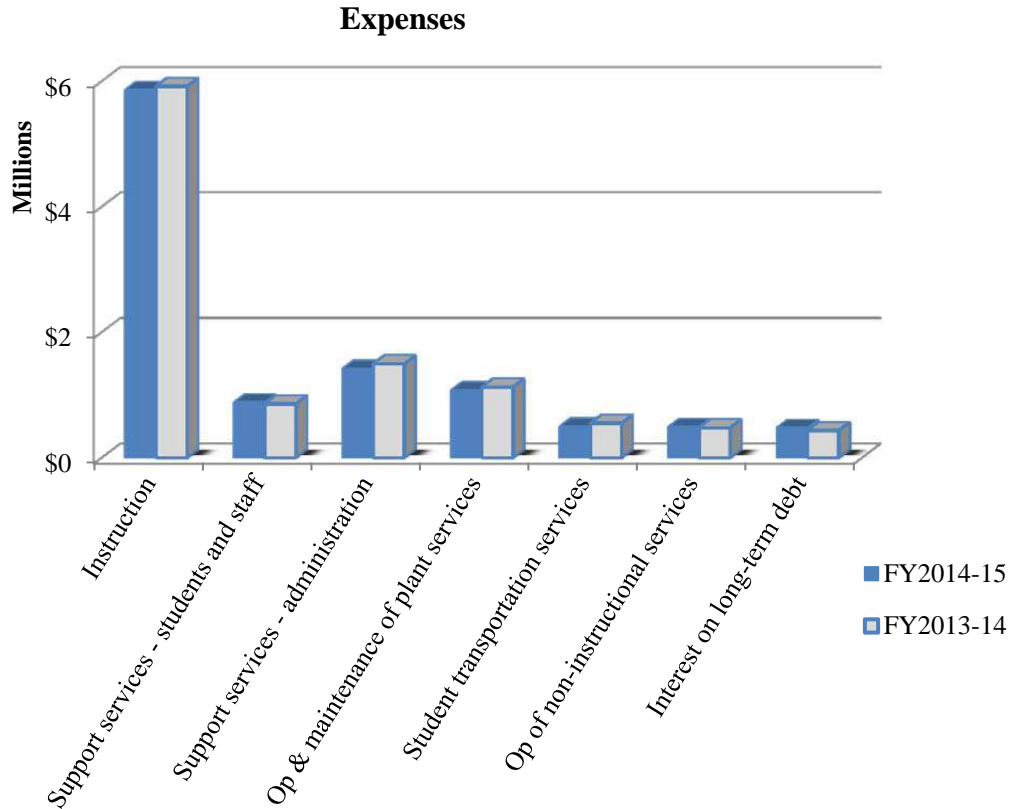
GOVERNMENT-WIDE FINANCIAL ANALYSIS

Changes in net position. The District's total revenues for the current fiscal year were \$12.1 million. The total cost of all programs and services was \$10.7 million. The following table presents a summary of the changes in net position for the fiscal years ended June 30, 2015 and June 30, 2014.

| | <u>Fiscal Year Ended June 30, 2015</u> | <u>Fiscal Year Ended June 30, 2014</u> |
|---------------------------------------------|------------------------------------------------|------------------------------------------------|
| Revenues: | | |
| Program revenues: | | |
| Charges for services | \$ 372,956 | \$ 598,627 |
| Operating grants and contributions | 1,801,676 | 1,407,817 |
| Capital grants and contributions | 652,111 | 77,029 |
| General revenues: | | |
| Property taxes | 4,987,225 | 2,969,941 |
| Investment income | 32,292 | 23,950 |
| Unrestricted county aid | 306,068 | 323,492 |
| Unrestricted state aid | 3,887,650 | 3,533,245 |
| Unrestricted federal aid | 51,651 | 64,517 |
| Total revenues | <u>12,091,629</u> | <u>8,998,618</u> |
| Expenses: | | |
| Instruction | 5,860,974 | 5,917,686 |
| Support services – students and staff | 879,573 | 857,092 |
| Support services – administration | 1,417,366 | 1,493,369 |
| Operation and maintenance of plant services | 1,073,945 | 1,122,811 |
| Student transportation services | 496,075 | 546,392 |
| Operation of non-instructional services | 487,478 | 474,201 |
| Interest on long-term debt | 474,880 | 431,531 |
| Total expenses | <u>10,690,291</u> | <u>10,843,082</u> |
| Changes in net position | <u>1,401,338</u> | <u>(1,844,464)</u> |
| Net position, beginning, as restated | <u>(1,087,360)</u> | <u>9,699,267</u> |
| Net position, ending | <u>\$ 313,978</u> | <u>\$ 7,854,803</u> |

**WILLCOX UNIFIED SCHOOL DISTRICT NO. 13
MANAGEMENT'S DISCUSSION AND ANALYSIS (MD&A)
YEAR ENDED JUNE 30, 2015**

GOVERNMENT-WIDE FINANCIAL ANALYSIS



The following are significant current year transactions that have had an impact on the change in net position.

- The increase of \$2.0 million in property taxes was to an increase in the levy.
- The increase of \$345,405 in unrestricted state aid was primarily due to an increase in state equalization assistance.
- The increase of \$393,859 in operating grants and contributions was primarily due to increased federal grant funding for E-Rate and Special Education Grants.
- The increase of \$575,082 in capital grants and contributions was primarily due to funding from the Arizona School Facilities Board for roofing projects.

**WILLCOX UNIFIED SCHOOL DISTRICT NO. 13
MANAGEMENT'S DISCUSSION AND ANALYSIS (MD&A)
YEAR ENDED JUNE 30, 2015**

GOVERNMENT-WIDE FINANCIAL ANALYSIS

The following table presents the cost of the District's major functional activities. The table also shows each function's net cost (total cost less charges for services generated by the activities and intergovernmental aid provided for specific programs). The net cost shows the financial burden that was placed on the State and District's taxpayers by each of these functions.

| | <u>Year Ended June 30, 2015</u> | | <u>Year Ended June 30, 2014</u> | |
|---------------------------------------------|---------------------------------|---------------------------------------------------|---------------------------------|---------------------------------------------------|
| | <u>Total</u> <u>Expenses</u> | <u>Net</u> <u>(Expense)/</u> <u>Revenue</u> | <u>Total</u> <u>Expenses</u> | <u>Net</u> <u>(Expense)/</u> <u>Revenue</u> |
| Instruction | \$ 5,860,974 | \$(4,096,870) | \$ 5,917,686 | \$(4,637,542) |
| Support services – students and staff | 879,573 | (636,945) | 857,092 | (645,064) |
| Support services – administration | 1,417,366 | (1,322,094) | 1,493,369 | (1,413,314) |
| Operation and maintenance of plant services | 1,073,945 | (938,248) | 1,122,811 | (1,121,587) |
| Student transportation services | 496,075 | (486,186) | 546,392 | (540,001) |
| Operation of non-instructional services | 487,478 | 34,436 | 474,201 | 2,653 |
| Interest on long-term debt | 474,880 | (417,641) | 431,531 | (404,754) |
| Total | <u>\$ 10,690,291</u> | <u>\$(7,863,548)</u> | <u>\$ 10,843,082</u> | <u>\$(8,759,609)</u> |

- The cost of all governmental activities this year was \$10.7 million.
- Federal and State governments and charges for services subsidized certain programs with grants and contributions and other local revenues of \$2.8 million.
- Net cost of governmental activities of \$7.9 million was financed by general revenues, which are made up of primarily property taxes of \$5.0 million and state aid of \$3.9 million.

FINANCIAL ANALYSIS OF THE DISTRICT'S FUNDS

As noted earlier, the District uses fund accounting to ensure and demonstrate compliance with finance-related legal requirements.

Governmental funds. The focus of the District's governmental funds is to provide information on near-term inflows, outflows, and balances of spendable resources. Such information is useful in assessing the District's financing requirements. In particular, unassigned fund balance may serve as a useful measure of the District's net resources available for spending at the end of the fiscal year.

**WILLCOX UNIFIED SCHOOL DISTRICT NO. 13
MANAGEMENT'S DISCUSSION AND ANALYSIS (MD&A)
YEAR ENDED JUNE 30, 2015**

FINANCIAL ANALYSIS OF THE DISTRICT'S FUNDS

The financial performance of the District as a whole is reflected in its governmental funds. As the District completed the year, its governmental funds reported a combined fund balance of \$916,921, a decrease of \$4.1 million due primarily to the use of prior year bond proceeds for the construction of a new gymnasium and agriculture building renovations.

The General Fund is the principal operating fund of the District. The increase in fund balance of \$763,117 to a deficit of \$202,805 as of fiscal year end was a result of an increase in the property tax levy and collections. General Fund revenues increased \$2.8 million as a result of increased property taxes. General Fund expenditures increased \$178,307.

The Bond Building Fund's fund balance decreased \$4.7 million during the year due to the construction of a new gymnasium and renovations on the agriculture building.

BUDGETARY HIGHLIGHTS

Over the course of the year, the District revised the General Fund annual expenditure budget. The difference between the original budget and the final amended budget was a \$62,276 decrease, or less than one percent.

Significant variances for the final amended budget and actual revenues resulted from the District no longer being required by the State of Arizona to prepare a revenue budget. A schedule showing the original and final budget amounts compared to the District's actual financial activity for the General Fund is provided in this report as required supplementary information. There were no significant variances between the final amended budget and actual expenditures.

CAPITAL ASSETS AND DEBT ADMINISTRATION

Capital Assets. At year end, the District had invested \$29.9 million in capital assets, including school buildings, athletic facilities, buses and other vehicles, computers, and other equipment. This amount represents a net increase prior to depreciation of \$5.1 million from the prior fiscal year primarily due to school improvement projects. Total depreciation expense for the current fiscal year was \$852,798.

**WILLCOX UNIFIED SCHOOL DISTRICT NO. 13
MANAGEMENT'S DISCUSSION AND ANALYSIS (MD&A)
YEAR ENDED JUNE 30, 2015**

CAPITAL ASSETS AND DEBT ADMINISTRATION

The following schedule presents a summary of capital asset balances for the fiscal years ended June 30, 2015 and June 30, 2014.

| | As of June 30, 2015 | As of June 30, 2014 |
|-----------------------------------|------------------------|------------------------|
| Capital assets – non-depreciable | \$ 6,227,927 | \$ 1,474,633 |
| Capital assets – depreciable, net | 14,071,455 | 14,415,994 |
| Total | \$ 20,299,382 | \$ 15,890,627 |

Additional information on the District's capital assets can be found in Note 6.

Debt Administration. At year end, the District had \$11.2 million in long-term debt outstanding, \$630,000 due within one year. Long-term debt decreased by \$600,000.

The District's general obligation bonds are subject to two limits; the Constitutional debt limit (total debt limit) on all general obligation bonds (up to 30 percent of the total secondary assessed valuation) and the statutory debt limit on Class B bonds (the greater of 20 percent of the secondary assessed valuation or \$1,500 per student). The current total debt limitation for the District is \$18.8 million and the Class B debt limit is \$12.5 million, which are more than the District's total outstanding general obligation and Class B debt, respectively.

Additional information on the District's long-term debt can be found in Notes 8 through 10.

ECONOMIC FACTORS AND NEXT YEAR'S BUDGET AND RATES

Many factors were considered by the District's administration during the process of developing the fiscal year 2015-16 budget. Among them:

- Fiscal year 2014-15 budget balance carry forward (estimated \$25,000).
- District student population.

Also considered in the development of the budget is the local economy and inflation of the surrounding area.

Budgeted expenditures in the General Fund decreased two percent to \$6.5 million in fiscal year 2015-16. No new programs were added to the 2015-16 budget.

**WILCOX UNIFIED SCHOOL DISTRICT NO. 13
MANAGEMENT'S DISCUSSION AND ANALYSIS (MD&A)
YEAR ENDED JUNE 30, 2015**

CONTACTING THE DISTRICT'S FINANCIAL MANAGEMENT

This financial report is designed to provide our citizens, taxpayers, and investors and creditors with a general overview of the District's finances and to demonstrate the District's accountability for the resources it receives. If you have questions about this report or need additional information, contact the Business and Finance Department, Willcox Unified School District No. 13, 480 North Bisbee Avenue, Willcox, Arizona 85643-1509.

BASIC FINANCIAL STATEMENTS

(This page intentionally left blank)

GOVERNMENT-WIDE FINANCIAL STATEMENTS

WILLCOX UNIFIED SCHOOL DISTRICT NO. 13
STATEMENT OF NET POSITION
JUNE 30, 2015

| | Governmental Activities |
|--------------------------------------------------|----------------------------|
| <u>ASSETS</u> | |
| Current assets: | |
| Cash and investments | \$ 2,294,358 |
| Property taxes receivable | 486,012 |
| Due from governmental entities | 1,650,821 |
| Total current assets | 4,431,191 |
| Noncurrent assets: | |
| Capital assets not being depreciated | 6,227,927 |
| Capital assets, net of accumulated depreciation | 14,071,455 |
| Total noncurrent assets | 20,299,382 |
| Total assets | 24,730,573 |
| <u>DEFERRED OUTFLOWS OF RESOURCES</u> | |
| Pension plan items | 983,781 |
| <u>LIABILITIES</u> | |
| Current liabilities: | |
| Accounts payable | 121,039 |
| Construction contracts payable | 328,076 |
| Credit line payable | 1,305,760 |
| Accrued payroll and employee benefits | 520,598 |
| Compensated absences payable | 132,323 |
| Accrued interest payable | 203,009 |
| Unearned revenues | 23,112 |
| Obligations under capital leases | 112,664 |
| Bonds payable | 630,000 |
| Total current liabilities | 3,376,581 |
| Noncurrent liabilities: | |
| Non-current portion of long-term obligations | 20,399,223 |
| Total noncurrent liabilities | 20,399,223 |
| Total liabilities | 23,775,804 |
| <u>DEFERRED INFLOWS OF RESOURCES</u> | |
| Pension plan items | 1,624,572 |
| <u>NET POSITION</u> | |
| Net investment in capital assets | 7,575,784 |
| Restricted for: | |
| Voter approved initiatives | 227,781 |
| Federal and state projects | 35,446 |
| Joint technical education | 242,069 |
| Other local initiatives | 69,427 |
| Debt service | 241,758 |
| Capital outlay | 275,295 |
| Unrestricted | (8,353,582) |
| Total net position | \$ 313,978 |

The notes to the basic financial statements are an integral part of this statement.

**WILLCOX UNIFIED SCHOOL DISTRICT NO. 13
STATEMENT OF ACTIVITIES
YEAR ENDED JUNE 30, 2015**

| Functions/Programs | Program Revenues | | | | Net (Expense) Revenue and Changes in Net Position |
|---------------------------------------------|----------------------|-------------------------|------------------------------------------|----------------------------------------|------------------------------------------------------------|
| | Expenses | Charges for Services | Operating Grants and Contributions | Capital Grants and Contributions | |
| Governmental activities: | | | | | |
| Instruction | \$ 5,860,974 | \$ 264,827 | \$ 847,166 | \$ 652,111 | \$ (4,096,870) |
| Support services - students and staff | 879,573 | | 242,628 | | (636,945) |
| Support services - administration | 1,417,366 | | 95,272 | | (1,322,094) |
| Operation and maintenance of plant services | 1,073,945 | 1,253 | 134,444 | | (938,248) |
| Student transportation services | 496,075 | | 9,889 | | (486,186) |
| Operation of non-instructional services | 487,478 | 106,876 | 415,038 | | 34,436 |
| Interest on long-term debt | 474,880 | | 57,239 | | (417,641) |
| Total governmental activities | <u>\$ 10,690,291</u> | <u>\$ 372,956</u> | <u>\$ 1,801,676</u> | <u>\$ 652,111</u> | <u>\$ (7,863,548)</u> |

General revenues:

Taxes:

| | |
|---------------------------------------------|-----------|
| Property taxes, levied for general purposes | 3,997,699 |
| Property taxes, levied for debt service | 837,637 |
| Property taxes, levied for capital outlay | 151,889 |
| Investment income | 32,292 |
| Unrestricted county aid | 306,068 |
| Unrestricted state aid | 3,887,650 |
| Unrestricted federal aid | 51,651 |

Total general revenues 9,264,886

Changes in net position 1,401,338

Net position, beginning of year, as restated (1,087,360)

Net position, end of year \$ 313,978

The notes to the basic financial statements are an integral part of this statement.

(This page intentionally left blank)

FUND FINANCIAL STATEMENTS

WILLCOX UNIFIED SCHOOL DISTRICT NO. 13
BALANCE SHEET - GOVERNMENTAL FUNDS
JUNE 30, 2015

| | General | Debt Service | Bond Building |
|--------------------------------------------------------------------------------|-------------------------|-------------------------|-----------------------|
| <u>ASSETS</u> | | | |
| Cash and investments | \$ 167,795 | \$ 991,795 | \$ 434,047 |
| Property taxes receivable | 385,491 | 82,972 | |
| Due from governmental entities | 1,074,423 | | |
| Due from other funds | 223,117 | | |
| Total assets | \$ 1,850,826 | \$ 1,074,767 | \$ 434,047 |
| <u>LIABILITIES, DEFERRED INFLOWS OF RESOURCES AND FUND BALANCES</u> | | | |
| Liabilities: | | | |
| Accounts payable | \$ 37,184 | \$ | \$ |
| Construction contracts payable | | | 235,877 |
| Credit line payable | 1,305,760 | | |
| Due to other funds | | | |
| Accrued payroll and employee benefits | 407,161 | | |
| Unearned revenues | | | |
| Bonds payable | | 630,000 | |
| Bond interest payable | | 203,009 | |
| Total liabilities | 1,750,105 | 833,009 | 235,877 |
| Deferred inflows of resources: | | | |
| Unavailable revenues - property taxes | 303,526 | 65,096 | |
| Fund balances (deficits): | | | |
| Restricted | | 176,662 | 198,170 |
| Unassigned | (202,805) | | |
| Total fund balances | (202,805) | 176,662 | 198,170 |
| Total liabilities, deferred inflows of resources and fund balances | \$ 1,850,826 | \$ 1,074,767 | \$ 434,047 |

The notes to the basic financial statements are an integral part of this statement.

| Non-Major Governmental Funds | Total Governmental Funds |
|------------------------------------|--------------------------------|
| \$ 700,721 | \$ 2,294,358 |
| 17,549 | 486,012 |
| 576,398 | 1,650,821 |
| | 223,117 |
| <u>\$ 1,294,668</u> | <u>\$ 4,654,308</u> |

| | |
|----------------|------------------|
| \$ 83,855 | \$ 121,039 |
| 92,199 | 328,076 |
| | 1,305,760 |
| 223,117 | 223,117 |
| 113,437 | 520,598 |
| 23,112 | 23,112 |
| | 630,000 |
| | 203,009 |
| <u>535,720</u> | <u>3,354,711</u> |

| | |
|---------------|----------------|
| <u>14,054</u> | <u>382,676</u> |
|---------------|----------------|

| | |
|----------------|----------------|
| 835,964 | 1,210,796 |
| (91,070) | (293,875) |
| <u>744,894</u> | <u>916,921</u> |

| | |
|---------------------|---------------------|
| <u>\$ 1,294,668</u> | <u>\$ 4,654,308</u> |
|---------------------|---------------------|

(This page intentionally left blank)

WILLCOX UNIFIED SCHOOL DISTRICT NO. 13
RECONCILIATION OF THE BALANCE SHEET - GOVERNMENTAL FUNDS
TO THE STATEMENT OF NET POSITION
JUNE 30, 2015

| | | |
|-------------------------------------------------------------------------------------------------------------------------------------------------------|---------------------|------------------------------|
| Total governmental fund balances | \$ | 916,921 |
| <p>Amounts reported for <i>governmental activities</i> in the Statement of Net Position are different because:</p> | | |
| <p>Capital assets used in governmental activities are not financial resources and, therefore, are not reported in the funds.</p> | | |
| Governmental capital assets | \$ 29,862,936 | |
| Less accumulated depreciation | <u>(9,563,554)</u> | 20,299,382 |
| <p>Property taxes are not available to pay for current period expenditures and, therefore, are reported as unavailable revenues in the funds.</p> | | |
| | | 382,676 |
| <p>Deferred outflows and inflows of resources related to pensions are applicable to future periods and, therefore, are not reported in the funds.</p> | | |
| Deferred outflows of resources related to pensions | 983,781 | |
| Deferred inflows of resources related to pensions | <u>(1,624,572)</u> | (640,791) |
| <p>Long-term liabilities are not due and payable in the current period and, therefore, are not reported in the funds.</p> | | |
| Compensated absences payable | (255,724) | |
| Obligations under capital leases | (1,248,350) | |
| Unamortized premium on long-term debt | (381,219) | |
| Net pension liability | (8,188,917) | |
| Bonds payable | <u>(10,570,000)</u> | <u>(20,644,210)</u> |
| Net position of governmental activities | \$ | <u><u>313,978</u></u> |

The notes to the basic financial statements are an integral part of this statement.

WILLCOX UNIFIED SCHOOL DISTRICT NO. 13
STATEMENT OF REVENUES, EXPENDITURES AND CHANGES IN FUND BALANCES -
GOVERNMENTAL FUNDS
YEAR ENDED JUNE 30, 2015

| | <u>General</u> | <u>Debt Service</u> | <u>Bond Building</u> |
|----------------------------------------------------------|---------------------|---------------------|----------------------|
| Revenues: | | | |
| Other local | \$ 412,375 | \$ 7,302 | \$ 20,164 |
| Property taxes | 3,817,873 | 849,942 | |
| State aid and grants | 3,226,913 | | |
| Federal aid, grants and reimbursements | 51,651 | | |
| Total revenues | <u>7,508,812</u> | <u>857,244</u> | <u>20,164</u> |
| Expenditures: | | | |
| Current - | | | |
| Instruction | 3,696,845 | | |
| Support services - students and staff | 570,573 | | |
| Support services - administration | 1,293,482 | | |
| Operation and maintenance of plant services | 822,194 | | |
| Student transportation services | 428,483 | | |
| Operation of non-instructional services | 20,326 | | |
| Capital outlay | 2,502 | | 4,660,172 |
| Debt service - | | | |
| Principal retirement | | 630,000 | |
| Interest and fiscal charges | | 406,017 | |
| Total expenditures | <u>6,834,405</u> | <u>1,036,017</u> | <u>4,660,172</u> |
| Excess (deficiency) of revenues over expenditures | <u>674,407</u> | <u>(178,773)</u> | <u>(4,640,008)</u> |
| Other financing sources (uses): | | | |
| Transfers in | 88,710 | 19,319 | |
| Transfers out | | | (19,319) |
| Total other financing sources (uses): | <u>88,710</u> | <u>19,319</u> | <u>(19,319)</u> |
| Changes in fund balances | <u>763,117</u> | <u>(159,454)</u> | <u>(4,659,327)</u> |
| Fund balances (deficits), beginning of year | (965,922) | 336,116 | 4,857,497 |
| Fund balances (deficits), end of year | <u>\$ (202,805)</u> | <u>\$ 176,662</u> | <u>\$ 198,170</u> |

The notes to the basic financial statements are an integral part of this statement.

| Non-Major Governmental Funds | Total Governmental Funds |
|------------------------------------|--------------------------------|
| \$ 353,021 | \$ 792,862 |
| 151,061 | 4,818,876 |
| 1,203,664 | 4,430,577 |
| 1,829,314 | 1,880,965 |
| <u>3,537,060</u> | <u>11,923,280</u> |
| 1,332,403 | 5,029,248 |
| 271,935 | 842,508 |
| 120,657 | 1,414,139 |
| 99,807 | 922,001 |
| 9,175 | 437,658 |
| 463,089 | 483,415 |
| 979,965 | 5,642,639 |
| 109,909 | 739,909 |
| 84,303 | 490,320 |
| <u>3,471,243</u> | <u>16,001,837</u> |
| <u>65,817</u> | <u>(4,078,557)</u> |
| | 108,029 |
| <u>(88,710)</u> | <u>(108,029)</u> |
| <u>(88,710)</u> | |
| <u>(22,893)</u> | <u>(4,078,557)</u> |
| 767,787 | 4,995,478 |
| <u>\$ 744,894</u> | <u>\$ 916,921</u> |

WILLCOX UNIFIED SCHOOL DISTRICT NO. 13
RECONCILIATION OF THE STATEMENT OF REVENUES, EXPENDITURES AND CHANGES
IN FUND BALANCES - GOVERNMENTAL FUNDS TO THE STATEMENT OF ACTIVITIES
YEAR ENDED JUNE 30, 2015

Net changes in fund balances - total governmental funds **\$ (4,078,557)**

Amounts reported for *governmental activities* in the Statement of Activities are different because:

Governmental funds report the portion of capital outlay for capitalized assets as expenditures. However, in the Statement of Activities, the costs of those assets are allocated over their estimated useful lives as depreciation expense.

| | | |
|-------------------------------------|------------------|-----------|
| Expenditures for capitalized assets | \$ 5,314,496 | |
| Less current year depreciation | <u>(852,798)</u> | 4,461,698 |

| | | |
|------------------------------------------------------------------------------------------------------------------------------------------|--|---------|
| Property taxes in the Statement of Activities that do not provide current financial resources are not reported as revenues in the funds. | | 168,349 |
|------------------------------------------------------------------------------------------------------------------------------------------|--|---------|

Repayments of long-term debt principal are expenditures in the governmental funds, but the repayment reduces long-term liabilities in the Statement of Net Position.

| | | |
|------------------------------------|----------------|---------|
| Capital lease principal retirement | 109,909 | |
| Bond principal retirement | <u>630,000</u> | 739,909 |

Governmental funds report pension contributions as expenditures. However, they are reported as deferred outflows of resources in the Statement of Net Position. The change in the net pension liability, adjusted for deferred pension items, is reported as pension expense in the Statement of Activities.

| | | |
|------------------------------------|------------------|---------|
| Current year pension contributions | 567,596 | |
| Pension expense | <u>(455,141)</u> | 112,455 |

Some expenses reported in the Statement of Activities do not require the use of current financial resources and, therefore, are not reported as expenditures in governmental funds.

| | | |
|-------------------------------------|---------------|----------------|
| Loss on disposal of assets | (52,943) | |
| Amortization of deferred bond items | 15,440 | |
| Compensated absences | <u>34,987</u> | <u>(2,516)</u> |

Changes in net position in governmental activities **\$ 1,401,338**

The notes to the basic financial statements are an integral part of this statement.

WILLCOX UNIFIED SCHOOL DISTRICT NO. 13
STATEMENT OF ASSETS AND LIABILITIES
FIDUCIARY FUNDS
JUNE 30, 2015

| | Agency |
|-------------------------------|-------------------|
| <u>ASSETS</u> | |
| Cash and investments | \$ 129,299 |
| Total assets | \$ 129,299 |
| <u>LIABILITIES</u> | |
| Deposits held for others | \$ 41,895 |
| Due to student groups | 87,404 |
| Total liabilities | \$ 129,299 |

The notes to the basic financial statements are an integral part of this statement.

WILLCOX UNIFIED SCHOOL DISTRICT NO. 13
NOTES TO FINANCIAL STATEMENTS
JUNE 30, 2015

NOTE 1 – SUMMARY OF SIGNIFICANT ACCOUNTING POLICIES

The financial statements of the Willcox Unified School District No. 13 (District) have been prepared in conformity with accounting principles generally accepted in the United States of America as applied to government units. The Governmental Accounting Standards Board (GASB) is the accepted standard-setting body for establishing governmental accounting and financial reporting principles.

During the year ended June 30, 2015, the District implemented the provisions of GASB Statement No. 68, *Accounting and Financial Reporting for Pensions*, as amended by GASB Statement No. 71, *Pension Transition for Contributions Made Subsequent to the Measurement Date*. This Statement requires governments providing defined benefit pensions to recognize the long-term obligation for pension benefits as a liability, and to more comprehensively and comparably measure the annual costs of pension benefits. This Statement also enhances accountability and transparency through revised note disclosures and new required supplementary information.

The more significant of the District's accounting policies are described below.

A. Reporting Entity

The Governing Board is organized under Section 15-321 of the Arizona Revised Statutes (A.R.S.). Management of the District is independent of other state or local governments. The County Treasurer collects taxes for the District, but exercises no control over its expenditures/expenses.

The membership of the Governing Board consists of five members elected by the public. Under existing statutes, the Governing Board's duties and powers include, but are not limited to, the acquisition, maintenance and disposition of school property; the development and adoption of a school program; and the establishment, organization and operation of schools.

The Board also has broad financial responsibilities, including the approval of the annual budget, and the establishment of a system of accounting and budgetary controls.

The financial reporting entity consists of a primary government and its component units. A component unit is a legally separate entity that must be included in the reporting entity in conformity with generally accepted accounting principles. The District is a primary government because it is a special-purpose government that has a separately elected governing body, is legally separate, and is fiscally independent of other state or local governments. Furthermore, there are no component units combined with the District for financial statement presentation purposes, and the District is not included in any other governmental reporting entity. Consequently, the District's financial statements include only the funds of those organizational entities for which its elected governing board is financially accountable. The District's major operations include education, student transportation, construction and maintenance of District facilities, food services, and athletic functions.

WILLCOX UNIFIED SCHOOL DISTRICT NO. 13
NOTES TO FINANCIAL STATEMENTS
JUNE 30, 2015

NOTE 1 – SUMMARY OF SIGNIFICANT ACCOUNTING POLICIES

B. Government-Wide and Fund Financial Statements

The government-wide financial statements (i.e., the statement of net position and the statement of activities) present financial information about the District as a whole. The reported information includes all of the nonfiduciary activities of the District. For the most part, the effect of internal activity has been removed from these statements. These statements are to distinguish between the governmental and business-type activities of the District. Governmental activities normally are supported by taxes and intergovernmental revenues, and are reported separately from business-type activities, which rely to a significant extent on fees and charges for support. The District does not have any business-type activities.

The statement of activities demonstrates the degree to which the direct expenses of a given function or segment are offset by program revenues. Direct expenses are those that are clearly identifiable with a specific function or segment. Program revenues include 1) charges to customers or applicants who purchase, use, or directly benefit from goods, services, or privileges provided by a given function or segment and 2) grants and contributions that are restricted to meeting the operational or capital requirements of a particular function or segment. Taxes, unrestricted federal, state and county aid, and other items not included among program revenues are reported instead as general revenues.

Separate financial statements are provided for governmental funds and fiduciary funds, even though the latter are excluded from the government-wide financial statements. Major individual governmental funds are reported as separate columns in the fund financial statements.

C. Measurement Focus, Basis of Accounting, and Financial Statement Presentation

Government-Wide Financial Statements – The government-wide financial statements are reported using the economic resources measurement focus and the accrual basis of accounting. Revenues are recorded when earned and expenses are recorded when a liability is incurred, regardless of the timing of related cash flows. Property taxes are recognized as revenues in the year for which they are levied. Grants and similar items are recognized as revenue as soon as all eligibility requirements imposed by the grantor or provider have been met. As a general rule, the effect of internal activity has been eliminated from the government-wide financial statements; however, the effects of interfund services provided and used between functions are reported as expenses and program revenues at amounts approximating their external exchange value.

WILLCOX UNIFIED SCHOOL DISTRICT NO. 13
NOTES TO FINANCIAL STATEMENTS
JUNE 30, 2015

NOTE 1 – SUMMARY OF SIGNIFICANT ACCOUNTING POLICIES

Fund Financial Statements – Governmental fund financial statements are reported using the current financial resources measurement focus and the modified accrual basis of accounting. Revenues are recognized as soon as they are both measurable and available. Revenues are considered to be available when they are collectible within the current period or soon enough thereafter to pay liabilities of the current period. For this purpose, the District considers revenues to be available if they are collected within 60 days of the end of the current fiscal period. Expenditures generally are recorded when a liability is incurred, as under accrual accounting. However, debt service expenditures, as well as expenditures related to compensated absences, and claims and judgments, are recorded only when payment is due. As permitted by generally accepted accounting principles the District applies the “early recognition” option for debt service payments. Property tax resources are provided in the Debt Service Fund during the current year for the payment of debt service principal and interest due early in the following year (less than one month). Therefore, the expenditures and related liabilities have been recognized in the current period.

Property taxes, federal, state, and county aid, and investment income associated with the current fiscal period are all considered to be susceptible to accrual and have been recognized as revenues of the current fiscal period. Food services and miscellaneous revenues are not susceptible to accrual because generally they are not measurable until received in cash. Grants and similar awards are recognized as revenue as soon as all eligibility requirements imposed by the grantor or provider have been met. Unearned revenues arise when resources are received by the District before it has legal claim to them, as when grant monies are received prior to meeting all eligibility requirements imposed by the provider.

Delinquent property taxes and other receivables that will not be collected within the available period have been reported as unavailable revenues on the governmental fund financial statements.

The focus of governmental fund financial statements is on major funds rather than reporting funds by type. Each major fund is presented in a separate column. Non-major funds are aggregated and presented in a single column. Fiduciary funds are reported by fund type.

The District reports the following major governmental funds:

General Fund – The General Fund is the District’s primary operating fund. It accounts for all resources used to finance District maintenance and operation except those required to be accounted for in other funds. The General Fund includes the District’s Maintenance and Operation Fund as well as certain activities budgeted in separate funds in accordance with A.R.S. These funds are maintained as separate funds for budgetary purposes but do not meet the criteria for separate reporting in the financial statements.

WILLCOX UNIFIED SCHOOL DISTRICT NO. 13
NOTES TO FINANCIAL STATEMENTS
JUNE 30, 2015

NOTE 1 – SUMMARY OF SIGNIFICANT ACCOUNTING POLICIES

Debt Service Fund – The Debt Service Fund accounts for the accumulation of resources for, and the payment of, long-term debt principal, interest and related costs.

Bond Building Fund – The Bond Building Fund accounts for proceeds from District bond issues that are expended on the acquisition or lease of sites, construction or renovation of school buildings, improving school grounds, or purchasing pupil transportation vehicles.

Additionally, the District reports the following fund type:

Fiduciary Funds – The Fiduciary Funds are Agency Funds which account for resources held by the District on behalf of others. This fund type includes the Student Activities Fund, which accounts for monies raised by students to finance student clubs and organizations held by the District as an agent. In addition, funds that account for employee withholdings before the monies are remitted to the appropriate entities are included in the Agency Funds.

The Agency Funds are custodial in nature and do not have a measurement focus and are reported on the accrual basis of accounting. The Agency Funds are reported by fund type.

D. Cash and Investments

A.R.S. require the District to deposit all cash with the County Treasurer, except as discussed below. Cash with the County Treasurer is pooled for investment purposes, except for cash of the Debt Service and Bond Building Funds that may be invested separately. Interest earned from investments purchased with pooled monies is allocated to each of the District's funds based on their average balances. As required by statute, interest earnings of the Bond Building Fund are recorded initially in that fund, but then transferred to the Debt Service Fund. All investments are stated at fair value.

Statute authorizes the District to separately invest monies of the Bond Building and Debt Service Funds in the State Treasurer's investment pools; obligations issued and guaranteed by the United States or any of its agencies or instrumentalities; specified state and local government bonds and notes; and interest bearing savings accounts or certificates of deposit.

Statute authorizes the District to deposit monies of the Auxiliary Operations and Student Activities Funds in bank accounts. Monies in these funds may also be invested. In addition, statute authorizes the District to maintain various bank accounts such as clearing accounts to temporarily deposit receipts before they are transmitted to the County Treasurer; revolving accounts to pay minor disbursements; and withholdings accounts for taxes and employee insurance programs. Some of these bank accounts may be interest bearing.

WILLCOX UNIFIED SCHOOL DISTRICT NO. 13
NOTES TO FINANCIAL STATEMENTS
JUNE 30, 2015

NOTE 1 – SUMMARY OF SIGNIFICANT ACCOUNTING POLICIES

Statute does not include any requirements for credit risk, concentration of credit risk, interest rate risk, or foreign currency risk. Statute requires collateral for deposits of Bond Building and Debt Service Funds monies in interest bearing savings accounts and certificates of deposit at 101 percent of all deposits not covered by federal depository insurance.

Arizona statute requires a pooled collateral program for public deposits and a Statewide Collateral Pool Administrator (Administrator) in the State Treasurer's Office. The purpose of the pooled collateral program is to ensure that governmental entities' public deposits placed in participating depositories are secured with collateral of 102 percent of the public deposits, less any applicable deposit insurance. An eligible depository may not retain or accept any public deposit unless it has deposited the required collateral with a qualified escrow agent or the Administrator. The Administrator manages the pooled collateral program, including reporting on each depository's compliance with the program.

E. Investment Income

Investment income is composed of interest, dividends, and net changes in the fair value of applicable investments. Investment income is included in other local revenue in the fund financial statements.

F. Receivables and Payables

Activity between funds that is representative of lending/borrowing arrangements outstanding at the end of the fiscal year is referred to as either "due to/from other funds" (i.e., the current portion of interfund loans) or "advances to/from other funds" (i.e., the non-current portion of interfund loans). All other outstanding balances between funds are reported as "due to/from other funds." Interfund balances between governmental funds are eliminated on the Statement of Net Position. All receivables, including property taxes receivable, are shown net of an allowance for uncollectibles.

G. Property Tax Calendar

The County Treasurer is responsible for collecting property taxes for all governmental entities within the county. The county levies real and personal property taxes on or before the third Monday in August, that become due and payable in two equal installments. The first installment is due on the first day of October and becomes delinquent after the first business day of November. The second installment is due on the first day of March of the next year and becomes delinquent after the first business day of May.

WILLCOX UNIFIED SCHOOL DISTRICT NO. 13
NOTES TO FINANCIAL STATEMENTS
JUNE 30, 2015

NOTE 1 – SUMMARY OF SIGNIFICANT ACCOUNTING POLICIES

Pursuant to A.R.S., a lien against assessed real and personal property attaches on the first day of January preceding assessment and levy; however according to case law, an enforceable legal claim to the asset does not arise.

H. Prepaid items

Certain payments to vendors reflect costs applicable to future accounting periods and are recorded as prepaid items in both the government-wide and fund financial statements. Prepaid items are recorded as expenses when consumed in the government-wide financial statements and as expenditures when purchased in the fund financial statements.

I. Capital Assets

Capital assets, which include land and improvements; buildings and improvements; vehicles, furniture, and equipment; and construction in progress, are reported in the government-wide financial statements.

Capital assets are defined assets with an initial, individual cost in excess of \$5,000 and an estimated useful life of more than one year. Such assets are recorded at historical cost, or estimated historical cost if actual historical cost is not available. Donated capital assets are recorded at the estimated fair market value at the date of donation.

The costs of normal maintenance and repairs that do not add to the value of the asset or materially extend the life of the asset are not capitalized.

Capital assets are depreciated using the straight-line method over the following estimated useful lives:

| | |
|-----------------------------------|---------------|
| Land improvements | 10 - 20 years |
| Buildings and improvements | 5 - 50 years |
| Vehicles, furniture and equipment | 1 - 20 years |

J. Deferred Outflows/Inflows of Resources

In addition to assets, the statement of financial position may report a separate section for deferred outflows of resources. This separate financial statement element, deferred outflows of resources, represents a consumption of net position that applies to a future period and so will not be recognized as an outflow of resources (expense/expenditure) until then.

WILLCOX UNIFIED SCHOOL DISTRICT NO. 13
NOTES TO FINANCIAL STATEMENTS
JUNE 30, 2015

NOTE 1 – SUMMARY OF SIGNIFICANT ACCOUNTING POLICIES

In addition to liabilities, the statement of financial position may report a separate section for deferred inflows of resources. This separate financial statement element, deferred inflows of resources, represents an acquisition of net position that applies to a future period and so will not be recognized as an inflow of resources (revenue) until that time.

K. Compensated Absences

The District's employee vacation and sick leave policies generally provide for granting vacation and sick leave with pay in varying amounts. Only benefits considered vested are recognized in the financial statements. The liability for vacation and sick leave is reported in the government-wide financial statements. A liability for these amounts is reported in governmental funds only if they have matured, for example, as a result of employee leave, resignations and retirements. Generally, resources from the General Fund are used to pay for compensated absences.

L. Pensions

For purposes of measuring the net pension liability, deferred outflows of resources and deferred inflows of resources related to pensions, and pension expense, information about the pension plan's fiduciary net position and additions to/deductions from the plan's fiduciary net position have been determined on the same basis as they are reported by the plan. For this purpose, benefit payments (including refunds of employee contributions) are recognized when due and payable in accordance with the benefit terms. Investments are reported at fair value.

M. Long-term Obligations

In the government-wide financial statements, long-term debt and other long-term obligations are reported as liabilities on the statement of net position. Bond premiums and discounts, as well as, the difference between the reacquisition price and the net carrying amount of the old debt, are deferred and amortized over the life of the bonds using the straight-line method over the term of the related debt.

In the fund financial statements, governmental fund types recognize bond premiums and discounts, as well as bond issuance costs, during the current period. The face amount of debt issued is reported as other financing sources. Premiums received on debt issuances are reported as other financing sources while discounts on debt issuances are reported as other financing uses. Issuance costs, whether or not withheld from the actual debt proceeds received, are reported as debt service expenditures.

WILLCOX UNIFIED SCHOOL DISTRICT NO. 13
NOTES TO FINANCIAL STATEMENTS
JUNE 30, 2015

NOTE 1 – SUMMARY OF SIGNIFICANT ACCOUNTING POLICIES

N. Interfund Activity

Flows of cash from one fund to another without a requirement for repayment are reported as interfund transfers. Interfund transfers between governmental funds are eliminated in the Statement of Activities. Interfund transfers in the fund financial statements are reported as other financing sources/uses in governmental funds.

O. Net Position Flow Assumption

In the government-wide financial statements the District applies restricted resources first when outlays are incurred for purposes for which either restricted or unrestricted amounts are available.

P. Estimates

The preparation of the financial statements in conformity with accounting principles generally accepted in the United States of America requires management to make estimates and assumptions that affect the amounts reported in the financial statements and accompanying notes. Actual results may differ from those estimates.

NOTE 2 – FUND BALANCE CLASSIFICATIONS

Fund balances of the governmental funds are reported separately within classifications based on a hierarchy of the constraints placed on the use of those resources. The classifications are based on the relative strength of the constraints that control how the specific amounts can be spent. The classifications are nonspendable, restricted, and unrestricted, which includes committed, assigned, and unassigned fund balance classifications.

Nonspendable. The nonspendable fund balance classification includes amounts that cannot be spent because they are not in spendable form, or legally or contractually required to be maintained intact.

Restricted. Fund balance is reported as restricted when constraints placed on the use of resources are either externally imposed by creditors (such as through debt covenants), grantors, contributors, or laws or regulations of other governments or is imposed by law through constitutional provisions or enabling legislation.

WILLCOX UNIFIED SCHOOL DISTRICT NO. 13
NOTES TO FINANCIAL STATEMENTS
JUNE 30, 2015

NOTE 2 – FUND BALANCE CLASSIFICATIONS

Committed. The committed fund balance classification includes amounts that can be used only for the specific purposes imposed by formal action of the Governing Board. Those committed amounts cannot be used for any other purpose unless the Governing Board removes or changes the specified use by taking the same type of action it employed to previously commit those amounts. The District does not have a formal policy or procedures for the utilization of committed fund balance, accordingly, no committed fund balance amounts are reported.

Assigned. Amounts in the assigned fund balance classification are intended to be used by the District for specific purposes but do not meet the criteria to be classified as restricted or committed. In governmental funds other than the General Fund, assigned fund balance represents the remaining amount that is not restricted or committed. In the General Fund, assigned amounts represent intended uses established by the Governing Board or a management official delegated that authority by the formal Governing Board action. The District does not have a formal policy for the utilization of assigned fund balance, accordingly, no assigned fund balance amounts are reported.

Unassigned. Unassigned fund balance is the residual classification for the General Fund and includes all spendable amounts not contained in the other classifications. In other governmental funds, the unassigned classification is used only to report a deficit balance resulting from overspending for specific purposes for which amounts had been restricted, committed, or assigned.

The District applies restricted resources first when outlays are incurred for purposes for which either restricted or unrestricted (committed, assigned, and unassigned) amounts are available. Similarly, within unrestricted fund balance, committed amounts are reduced first followed by assigned, and then unassigned amounts when expenditures are incurred for purposes for which amounts in any of the unrestricted fund balance classifications could be used.

WILLCOX UNIFIED SCHOOL DISTRICT NO. 13
NOTES TO FINANCIAL STATEMENTS
JUNE 30, 2015

NOTE 2 – FUND BALANCE CLASSIFICATIONS

The table below provides detail of the major components of the District’s fund balance classifications at year end.

| | General Fund | Debt Service Fund | Bond Building Fund | Non-Major Governmental Funds |
|----------------------------|-----------------|----------------------|--------------------------|------------------------------------|
| Fund Balances: | | | | |
| Restricted: | | | | |
| Debt service | \$ | \$ 176,662 | \$ | \$ |
| Capital projects | | | | 261,241 |
| Bond building projects | | | 198,170 | |
| Voter approved initiatives | | | | 227,781 |
| Federal and state projects | | | | 35,446 |
| Extracurricular activities | | | | 66,813 |
| Joint technical education | | | | 242,069 |
| Other purposes | | | | 2,614 |
| Unassigned | (202,805) | | | (91,070) |
| Total fund balances | \$ (202,805) | \$ 176,662 | \$ 198,170 | \$ 744,894 |

NOTE 3 – STEWARDSHIP, COMPLIANCE AND ACCOUNTABILITY

Individual Deficit Fund Balance – At year end, the General Fund, a major governmental fund, Other Federal Projects and Building Renewal Grants Funds, non-major governmental funds, reported deficits of \$202,805, \$22,078 and \$68,992 in fund balance, respectively.

The General Fund’s deficit arose because of an insufficient tax rate being levied for fiscal year 2015. Additional revenues and an increased levy are expected to eliminate the deficit in future years

The deficits in the Other Federal Projects and Building Renewal Grant Funds arose because of operations during the year and prior years. Additional revenues received in fiscal year 2014-15 are expected to eliminate the deficits.

Excess Expenditures Over Budget – At year end, the District had expenditures in several funds that exceeded the budgets, however, this does not constitute a violation of any legal provisions.

WILLCOX UNIFIED SCHOOL DISTRICT NO. 13
NOTES TO FINANCIAL STATEMENTS
JUNE 30, 2015

NOTE 4 – CASH AND INVESTMENTS

Custodial Credit Risk – Deposits. Custodial credit risk is the risk that in the event of bank failure the District’s deposits may not be returned to the District. The District does not have a deposit policy for custodial credit risk. At year end, the carrying amount of the District’s deposits was \$160,485, and the bank balance was \$170,584.

The County Treasurer’s pool is an external investment pool with no regulatory oversight. The pool is not required to register (and is not registered) with the Securities and Exchange Commission. The fair value of each participant’s position in the County Treasurer investment pool approximates the value of the participant’s shares in the pool and the participants’ shares are not identified with specific investments.

At year end, the District’s investments consisted of the following:

| | <u>Average Maturities</u> | <u>Fair Value</u> |
|------------------------------------|---------------------------|---------------------|
| County Treasurer’s investment pool | 3.93 years | <u>\$ 2,263,172</u> |

Interest Rate Risk. The District does not have a formal investment policy that limits investment maturities as a means of managing its exposure to fair value losses arising from increasing interest rates.

Credit Risk. The District has no investment policy that would further limit its investment choices. As of year end, the District’s investment in the County Treasurer’s investment pool did not receive a credit quality rating from a national rating agency.

Custodial Credit Risk – Investments. The District’s investment in the County Treasurer’s investment pool represents a proportionate interest in the pool’s portfolio; however, the District’s portion is not identified with specific investments and is not subject to custodial credit risk.

WILLCOX UNIFIED SCHOOL DISTRICT NO. 13
NOTES TO FINANCIAL STATEMENTS
JUNE 30, 2015

NOTE 5 – RECEIVABLES

Receivable balances, net of allowance for uncollectibles, have been disaggregated by type and presented separately in the financial statements with the exception of due from governmental entities. Due from governmental entities, net of allowance for uncollectibles, as of year end for the District's individual major fund and non-major governmental funds in the aggregate were as follows:

| | General Fund | Non-Major Governmental Funds |
|---------------------------------------|-----------------|------------------------------------|
| Due from other governmental entities: | | |
| Due from federal government | \$ 1,600 | \$ 337,622 |
| Due from state government | 1,067,456 | 169,882 |
| Due from county government | 5,367 | |
| Due from other districts | | 68,894 |
| Net due from governmental entities | \$ 1,074,423 | \$ 576,398 |

NOTE 6 – CAPITAL ASSETS

A summary of capital asset activity for the current fiscal year follows:

| | Beginning Balance | Increase | Decrease | Ending Balance |
|----------------------------------------------|----------------------|--------------|-----------|-------------------|
| Governmental Activities | | | | |
| Capital assets, not being depreciated: | | | | |
| Land | \$ 1,201,463 | \$ | \$ | \$ 1,201,463 |
| Construction in progress | 273,170 | 4,759,294 | 6,000 | 5,026,464 |
| Total capital assets, not being depreciated | 1,474,633 | 4,759,294 | 6,000 | 6,227,927 |
| Capital assets, being depreciated: | | | | |
| Land improvements | 2,027,905 | 19,722 | | 2,047,627 |
| Buildings and improvements | 18,474,464 | 515,414 | 160,801 | 18,829,077 |
| Vehicles, furniture and equipment | 2,815,432 | 26,066 | 83,193 | 2,758,305 |
| Total capital assets being depreciated | 23,317,801 | 561,202 | 243,994 | 23,635,009 |
| Less accumulated depreciation for: | | | | |
| Land improvements | (529,136) | (102,824) | | (631,960) |
| Buildings and improvements | (6,069,147) | (595,854) | (114,753) | (6,550,248) |
| Vehicles, furniture and equipment | (2,303,524) | (154,120) | (76,298) | (2,381,346) |
| Total accumulated depreciation | (8,901,807) | (852,798) | (191,051) | (9,563,554) |
| Total capital assets, being depreciated, net | 14,415,994 | (291,596) | 52,943 | 14,071,455 |
| Governmental activities capital assets, net | \$ 15,890,627 | \$ 4,467,698 | \$ 58,943 | \$ 20,299,382 |

WILLCOX UNIFIED SCHOOL DISTRICT NO. 13
NOTES TO FINANCIAL STATEMENTS
JUNE 30, 2015

NOTE 6 – CAPITAL ASSETS

Depreciation expense was charged to governmental functions as follows:

| | |
|------------------------------------------------------|------------------|
| Instruction | \$642,328 |
| Support services – students and staff | 6,359 |
| Support services – administration | 29,999 |
| Operation and maintenance of plant services | 135,303 |
| Student transportation services | 37,053 |
| Operation of non-instructional services | 1,756 |
| Total depreciation expense – governmental activities | <u>\$852,798</u> |

Construction Commitments – At year end, the District had contractual commitments related to various capital projects for the construction of various building and improvement projects. At year end the District had spent \$5.0 million on the projects and had estimated remaining contractual commitments of \$87,586. These projects are being funded with bond proceeds.

NOTE 7 – SHORT TERM DEBT – REVOLVING LINE OF CREDIT

Revolving Line of Credit – The District has a revolving line of credit established through the County Treasurer to provide cash flow during the year to mitigate the impact of timing differences of expenditures and the receipt of state aid and property tax revenues. Short-term debt activity for the current fiscal year was as follows:

| | Beginning Balance | Issued | Redeemed | Ending Balance |
|--------------------------|----------------------|--------------|---------------|-------------------|
| Revolving line of credit | \$ 2,086,000 | \$ 5,421,560 | \$(6,201,800) | \$ 1,305,760 |

NOTE 8 – OBLIGATIONS UNDER CAPITAL LEASES

The District has acquired energy management equipment and a bus under the provisions of long-term lease agreements classified as capital leases. These lease agreements qualify as capital leases for accounting purposes and, therefore, have been recorded at the present value of their future minimum lease payments as of the inception date. Revenues from the Unrestricted Capital Outlay Fund are used to pay the capital lease obligations as they become due. The District receives a federal interest subsidy to fund the interest payments for the energy equipment. The interest subsidies are recorded as federal revenue in the Other Federal Projects Fund. Amortization of assets recorded under capital leases is included with depreciation expense.

WILLCOX UNIFIED SCHOOL DISTRICT NO. 13
NOTES TO FINANCIAL STATEMENTS
JUNE 30, 2015

NOTE 8 – OBLIGATIONS UNDER CAPITAL LEASES

The assets acquired through capital leases that meet the District’s capitalization threshold are as follows:

| | Governmental Activities |
|-----------------------------------|----------------------------|
| Asset: | |
| Building improvements | \$ 1,421,272 |
| Vehicles, furniture and equipment | 151,586 |
| Less: Accumulated depreciation | (569,192) |
| Total | \$ 1,003,666 |

The future minimum lease obligations and the net present value of these minimum lease payments at year end were as follows:

| | Governmental Activities |
|-----------------------------------------|----------------------------|
| Year Ending June 30: | |
| 2016 | \$ 190,666 |
| 2017 | 186,990 |
| 2018 | 182,185 |
| 2019 | 151,244 |
| 2020 | 147,245 |
| 2021-25 | 668,120 |
| 2026-27 | 234,769 |
| Total minimum lease payments | 1,761,219 |
| Less: amount representing interest | 512,869 |
| Present value of minimum lease payments | \$ 1,248,350 |
| Due within one year | \$ 112,664 |

WILLCOX UNIFIED SCHOOL DISTRICT NO. 13
NOTES TO FINANCIAL STATEMENTS
JUNE 30, 2015

NOTE 9 – GENERAL OBLIGATION BONDS PAYABLE

Bonds payable at year end consisted of the following outstanding general obligation bonds. The bond is callable with interest payable semiannually. Property taxes from the Debt Service Fund are used to pay bonded debt.

| <u>Purpose</u> | <u>Original Amount Issued</u> | <u>Interest Rates</u> | <u>Remaining Maturities</u> | <u>Outstanding Principal June 30, 2015</u> | <u>Due Within One Year</u> |
|----------------------------------|---------------------------------------|---------------------------|---------------------------------|----------------------------------------------------|--------------------------------|
| Governmental activities: | | | | | |
| Project of 2011, Series A (2012) | \$ 7,195,000 | 2.0-4.0% | 7/1/15-28 | \$ 6,095,000 | \$ 630,000 |
| Project of 2011, Series B (2013) | 5,105,000 | 2.0-5.0% | 7/1/15-33 | 5,105,000 | |
| Total | | | | <u>\$ 11,200,000</u> | <u>\$ 630,000</u> |

Annual debt service requirements to maturity on general obligation bonds at year end are summarized as follows:

| Year ending June 30: | <u>Governmental Activities</u> | |
|----------------------|--------------------------------|---------------------|
| | <u>Principal</u> | <u>Interest</u> |
| 2016 | \$ 630,000 | \$ 399,718 |
| 2017 | 645,000 | 380,518 |
| 2018 | 655,000 | 356,318 |
| 2019 | 600,000 | 335,368 |
| 2020 | 620,000 | 315,118 |
| 2021-25 | 3,295,000 | 1,279,241 |
| 2026-30 | 3,210,000 | 672,939 |
| 2031-34 | 1,545,000 | 158,225 |
| Total | <u>\$ 11,200,000</u> | <u>\$ 3,897,445</u> |

WILLCOX UNIFIED SCHOOL DISTRICT NO. 13
NOTES TO FINANCIAL STATEMENTS
JUNE 30, 2015

NOTE 10 – CHANGES IN LONG-TERM LIABILITIES

Long-term liability activity for the current fiscal year was as follows:

| | <u>Beginning Balance</u> | <u>Additions</u> | <u>Reductions</u> | <u>Ending Balance</u> | <u>Due Within One Year</u> |
|---------------------------------------------|------------------------------|------------------|---------------------|---------------------------|--------------------------------|
| Governmental activities: | | | | | |
| Bonds payable: | | | | | |
| General obligation bonds | \$ 11,800,000 | \$ | \$ 600,000 | \$ 11,200,000 | \$ 630,000 |
| Premium | 396,659 | | 15,440 | 381,219 | |
| Total bonds payable | <u>12,196,659</u> | | <u>615,440</u> | <u>11,581,219</u> | <u>630,000</u> |
| Obligations under capital leases | 1,358,259 | | 109,909 | 1,248,350 | 112,664 |
| Net pension liability | 8,942,163 | | 753,246 | 8,188,917 | |
| Compensated absences payable | <u>290,711</u> | <u>87,325</u> | <u>122,312</u> | <u>255,724</u> | <u>132,323</u> |
| Governmental activity long-term liabilities | <u>\$ 22,787,792</u> | <u>\$ 87,325</u> | <u>\$ 1,600,907</u> | <u>\$ 21,274,210</u> | <u>\$ 874,987</u> |

NOTE 11 – INTERFUND RECEIVABLES, PAYABLES, AND TRANSFERS

At year end, interfund balances were as follows:

Due to/from other funds – At year end, several non-major governmental funds had negative cash balances of \$223,117 in the Treasurer’s pooled cash accounts. Negative cash on deposit with the County Treasurer was reduced by interfund borrowing with the General Fund, a major governmental fund. All interfund balances are expected to be paid within one year.

Interfund transfers:

| <u>Transfers out</u> | <u>Transfers in</u> | | |
|------------------------------|-------------------------|------------------------------|-------------------|
| | <u>General Fund</u> | <u>Debt Service Fund</u> | <u>Total</u> |
| Bond Building Fund | \$ | \$ 19,319 | \$ 19,319 |
| Non-Major Governmental Funds | 88,710 | | 88,710 |
| Total | <u>\$ 88,710</u> | <u>\$ 19,319</u> | <u>\$ 108,029</u> |

Transfers between funds were used to (1) move investment income earned in the Bond Building Fund that is required by statute to be expended in the Debt Service Fund and (2) to move Federal grant funds restricted for indirect costs.

WILLCOX UNIFIED SCHOOL DISTRICT NO. 13
NOTES TO FINANCIAL STATEMENTS
JUNE 30, 2015

NOTE 12 – CONTINGENT LIABILITIES

Compliance –Amounts received or receivable from grantor agencies are subject to audit and adjustment by grantor agencies, principally the federal government. Any disallowed claims, including amounts already collected, may constitute a liability of the applicable funds. The amount, if any, of expenditures/expenses that may be disallowed by the grantor cannot be determined at this time, although the District expects such amounts, if any, to be immaterial.

NOTE 13 – RISK MANAGEMENT

The District is exposed to various risks of loss related to torts; theft of, damage to, and destruction of assets; errors and omissions; injuries to employees; and natural disasters.

The District was unable to obtain general property and liability insurance at a cost it considered to be economically justifiable. Therefore, the District joined the Arizona School Risk Retention Trust, Inc. (ASRRT). ASRRT is a public entity risk pool currently operating as a common risk management and insurance program for school districts and community colleges in the State. The District pays an annual premium to ASRRT for its general insurance coverage. The agreement provides that ASRRT will be self-sustaining through member premiums and will reinsure through commercial companies for claims in excess of specified amounts.

The District's employees have health and accident insurance coverage with the Arizona School Board Association Insurance Trust (ASBAIT). ASBAIT is a public entity risk pool currently operating as a common risk management and insurance program for school districts in the State. The District pays a monthly premium to ASBAIT for employees' health and accident insurance coverage. The agreement provides that ASBAIT will be self-sustaining through member premiums and will reinsure through commercial companies for claims in excess of specified amounts.

The District joined the Arizona School Alliance for Workers' Compensation, Inc. (Alliance) together with other school districts in the state for risks of loss related to workers' compensation claims. The Alliance is a public entity risk pool currently operating as a common risk management and insurance program for school districts in the State. The District pays quarterly premiums to the Alliance for its employee workers' compensation coverage. The agreement provides that the Alliance will be self-sustaining through members' premiums and will reinsure through commercial companies for claims in excess of specified amounts for each insured event.

WILLCOX UNIFIED SCHOOL DISTRICT NO. 13
NOTES TO FINANCIAL STATEMENTS
JUNE 30, 2015

NOTE 14 – PENSIONS AND OTHER POSTEMPLOYMENT BENEFITS

Plan Description. District employees participate in the Arizona State Retirement System (ASRS). The ASRS administers a cost-sharing multiple-employer defined benefit pension plan, a cost-sharing multiple-employer defined benefit health insurance premium benefit (OPEB) plan, and a cost-sharing multiple-employer defined benefit long-term disability (OPEB) plan. The Arizona State Retirement System Board governs the ASRS according to the provisions of A.R.S. Title 38, Chapter 5, Articles 2 and 2.1. ASRS is a component unit of the State of Arizona. The ASRS issues a publicly available financial report that includes its financial statements and required supplementary information. The report is available on the ASRS website at www.azasrs.gov.

Benefits Provided. The ASRS provides retirement, health insurance premium supplement, long-term disability, and survivor benefits. State statute establishes benefit terms. Retirement benefits are calculated on the basis of age, average monthly compensation, and service credit as follows:

| | Retirement Initial Membership Date: | |
|------------------------------------------------------|------------------------------------------------------------------------------------------|----------------------------------------------------------------------------------------------|
| | Before July 1, 2011 | On or After July 1, 2011 |
| Years of service and age required to receive benefit | Sum of years and age equals 80 10 years age 62 5 years age 50* Any years age 65 | 30 years age 55 25 years age 60 10 years age 62 5 years age 50* Any years age 65 |
| Final average salary is based on | Highest 36 months of last 120 months | Highest 60 months of last 120 months |
| Benefit percent per year of service | 2.1% to 2.3% | 2.1% to 2.3% |

*With actuarially reduced benefits

Retirement benefits for members who joined the ASRS prior to September 13, 2013, are subject to automatic cost-of-living adjustments based on excess investment earnings. Members with a membership date on or after September 13, 2013, are not eligible for cost-of-living adjustments. Survivor benefits are payable upon a member's death. For retired members, the survivor benefit is determined by the retirement benefit option chosen. For all other members, the beneficiary is entitled to the member's account balance that includes the member's contributions and employer's contributions, plus interest earned.

WILLCOX UNIFIED SCHOOL DISTRICT NO. 13
NOTES TO FINANCIAL STATEMENTS
JUNE 30, 2015

NOTE 14 – PENSIONS AND OTHER POSTEMPLOYMENT BENEFITS

Contributions. In accordance with state statutes, annual actuarial valuations determine active member and employer contribution requirements. The combined active member and employer contribution rates are expected to finance the costs of benefits employees earn during the year, with an additional amount to finance any unfunded accrued liability. For the current fiscal year, active ASRS members were required by statute to contribute at the actuarially determined rate of 11.60 percent (11.48 percent for retirement and 0.12 percent for long-term disability) of the members’ annual covered payroll, and the District was required by statute to contribute at the actuarially determined rate of 11.60 percent (10.89 percent for retirement, 0.59 percent for health insurance premium benefit, and 0.12 percent for long-term disability) of the active members’ annual covered payroll. The District’s contributions to the pension plan for the year ended June 30, 2015 were \$567,596.

In addition, the District was required by statute to contribute at the actuarially determined rate of 9.57 percent (9.51 for retirement and 0.06 percent for long-term disability) of annual covered payroll of retired members who worked in positions that would typically be filled by an employee who contributes to ASRS.

The District’s contributions for the current and two preceding years for OPEB, all of which were equal to the required contributions, were as follows:

| | | Health Benefit Supplement Fund | | Long-Term Disability Fund |
|----------------------|----|--------------------------------------|----|---------------------------------|
| Year ending June 30: | | | | |
| 2015 | \$ | 30,751 | \$ | 6,255 |
| 2014 | | 29,670 | | 11,868 |
| 2013 | | 32,818 | | 12,118 |

Pension Liability. At June 30, 2015, the District reported a liability of \$8.2 million for its proportionate share of the net pension liability of the ASRS. The net pension liability was measured as of June 30, 2014. The total pension liability used to calculate the net pension liability was determined using update procedures to roll forward the total pension liability from an actuarial valuation as of June 30, 2013, to the measurement date of June 30, 2014. The District’s proportion of the net pension liability was based on a projection of the District’s long-term share of contributions to the pension plan relative to the projected contributions of all participating employers, actuarially determined. At June 30, 2014, the District’s proportion was 0.055 percent, which was a decrease of 0.002 percent from its proportion measured as of June 30, 2013.

WILLCOX UNIFIED SCHOOL DISTRICT NO. 13
NOTES TO FINANCIAL STATEMENTS
JUNE 30, 2015

NOTE 14 – PENSIONS AND OTHER POSTEMPLOYMENT BENEFITS

Pension Expense and Deferred Outflows/Inflows of Resources. For the year ended June 30, 2015, the District recognized pension expense of \$455,141 and reported deferred outflows of resources and deferred inflows of resources related to pensions from the following sources:

| | <u>Deferred Outflows of Resources</u> | <u>Deferred Inflows of Resources</u> |
|---------------------------------------------------------------------------------------------------------|-----------------------------------------------|----------------------------------------------|
| Differences between expected and actual experience | \$ 416,185 | \$ |
| Net difference between projected and actual earnings on pension plan investments | | 1,431,989 |
| Changes in proportion and differences between contributions and proportionate share of contributions | | 192,583 |
| Contributions subsequent to the measurement date | <u>567,596</u> | |
| Total | <u>\$ 983,781</u> | <u>\$ 1,624,572</u> |

The deferred outflows of resources related to pensions resulting from contributions subsequent to the measurement date as reported in the table above will be recognized as a reduction of the net pension liability in the year ended June 30, 2016. Other amounts reported as deferred outflows of resources and deferred inflows of resources related to pensions will be recognized in pension expense as follows:

| Year Ending June 30: | |
|----------------------|--------------|
| 2016 | \$ (260,779) |
| 2017 | (260,779) |
| 2018 | (328,832) |
| 2019 | (357,997) |

WILLCOX UNIFIED SCHOOL DISTRICT NO. 13
NOTES TO FINANCIAL STATEMENTS
JUNE 30, 2015

NOTE 14 – PENSIONS AND OTHER POSTEMPLOYMENT BENEFITS

Actuarial Assumptions. The significant actuarial assumptions used to measure the total pension liability are as follows:

| | |
|-----------------------------|-------------------|
| Actuarial valuation date | June 30, 2013 |
| Actuarial roll forward date | June 30, 2014 |
| Actuarial cost method | Entry age normal |
| Investment rate of return | 8.0% |
| Projected salary increases | 3.0-6.75% |
| Inflation | 3.0% |
| Permanent base increases | Included |
| Mortality rates | 1994 GAM Scale BB |

The actuarial assumptions used in the June 30, 2013 valuation were based on the results of an actuarial experience study for the five-year period ended June 30, 2012. The purpose of the experience study was to review actual experience in relation to the actuarial assumptions in effect. The ASRS Board adopted the experience study recommended changes which were applied to the June 30, 2013, actuarial valuation. The study did not include an analysis of the assumed investment rate of return.

The long-term expected rate of return on ASRS pension plan investments was determined to be 8.79 percent using a building-block method in which best-estimate ranges of expected future real rates of return (expected returns, net of pension plan investment expense and inflation) are developed for each major asset class. These ranges are combined to produce the long-term expected rate of return by weighting the expected future real rates of return by the target asset allocation percentage and by adding expected inflation.

The target allocation and best estimates of arithmetic real rates of return for each major asset class are summarized in the following table:

| <u>Asset Class</u> | <u>Target Allocation</u> | <u>Long-Term Expected Real Rate of Return</u> |
|--------------------|------------------------------|-------------------------------------------------------|
| Equity | 63% | 7.03% |
| Fixed income | 25% | 3.20 |
| Real estate | 8% | 4.75 |
| Commodities | 4% | 4.50 |
| Total | <u>100%</u> | |

WILLCOX UNIFIED SCHOOL DISTRICT NO. 13
NOTES TO FINANCIAL STATEMENTS
JUNE 30, 2015

NOTE 14 – PENSIONS AND OTHER POSTEMPLOYMENT BENEFITS

Discount Rate. The discount rate used to measure the ASRS total pension liability was 8.0 percent, which is less than the long-term expected rate of return of 8.79 percent. The projection of cash flows used to determine the discount rate assumed that contributions from participating employers will be made based on the actuarially determined rates based on the ASRS Board’s funding policy, which establishes the contractually required rate under Arizona statute. Based on those assumptions, the pension plan’s fiduciary net position was projected to be available to make all projected future benefit payments of current plan members. Therefore, the long-term expected rate of return on pension plan investments was applied to all periods of projected benefit payments to determine the total pension liability.

Sensitivity of the Proportionate Share of the Net Pension Liability to Changes in the Discount Rate. The following presents the District’s proportionate share of the net pension liability calculated using the discount rate of 8.0 percent, as well as what the proportionate share of the net pension liability would be if it were calculated using a discount rate that is 1-percentage-point lower or 1-percentage-point higher than the current rate:

| | 1% Decrease (7.0%) | Current Discount Rate (8.0%) | 1% Increase (9.0%) |
|--------------------------------------------------|--------------------------|------------------------------------|--------------------------|
| Proportionate share of the net pension liability | \$10,350,372 | \$8,188,917 | \$7,016,220 |

Pension Plan Fiduciary Net Position. Detailed information about the pension plan’s fiduciary net position is available in the separately issued ASRS financial report. The report is available on the ASRS website at www.azasrs.gov.

Beginning Net Position Restatement. The implementation of GASB Statement No. 68, *Accounting and Financial Reporting for Pensions*, as amended by GASB Statement No. 71, *Pension Transition for Contributions Made Subsequent to the Measurement Date*, represents a change in accounting principle. Net position as of July 1, 2014, has been restated as follows for this change in accounting principle:

| | Statement of Activities |
|-----------------------------------------------------|----------------------------|
| Net position, June 30, 2014, as previously reported | \$ 7,854,803 |
| Net pension liability | (8,942,163) |
| Net position, July 1, 2014, as restated | \$ (1,087,360) |

(This page intentionally left blank)

REQUIRED SUPPLEMENTARY INFORMATION

WILLCOX UNIFIED SCHOOL DISTRICT NO. 13
SCHEDULE OF REVENUES, EXPENDITURES AND
CHANGES IN FUND BALANCES - BUDGET AND ACTUAL
GENERAL
YEAR ENDED JUNE 30, 2015

| | Budgeted Amounts | | Non-GAAP Actual | Variance with Final Budget Positive (Negative) |
|----------------------------------------------------|-----------------------|-----------------------|---------------------|---------------------------------------------------------|
| | Original | Final | | |
| Revenues: | | | | |
| Other local | \$ | \$ | \$ 307,413 | \$ 307,413 |
| Property taxes | | | 3,817,873 | 3,817,873 |
| State aid and grants | | | 3,207,110 | 3,207,110 |
| Federal aid, grants and reimbursements | | | 4,272 | 4,272 |
| Total revenues | | | <u>7,336,668</u> | <u>7,336,668</u> |
| Expenditures: | | | | |
| Current - | | | | |
| Instruction | 3,809,416 | 3,655,255 | 3,631,491 | 23,764 |
| Support services - students and staff | 588,408 | 559,066 | 535,270 | 23,796 |
| Support services - administration | 1,008,146 | 1,208,934 | 1,198,405 | 10,529 |
| Operation and maintenance of plant services | 862,753 | 774,159 | 812,670 | (38,511) |
| Student transportation services | 443,060 | 452,400 | 428,483 | 23,917 |
| Operation of non-instructional services | 13,450 | 13,143 | 16,339 | (3,196) |
| Total expenditures | <u>6,725,233</u> | <u>6,662,957</u> | <u>6,622,658</u> | <u>40,299</u> |
| Changes in fund balances | <u>(6,725,233)</u> | <u>(6,662,957)</u> | <u>714,010</u> | <u>7,376,967</u> |
| Fund balances (deficits), beginning of year | | | (1,396,960) | (1,396,960) |
| Fund balances (deficits), end of year | <u>\$ (6,725,233)</u> | <u>\$ (6,662,957)</u> | <u>\$ (682,950)</u> | <u>\$ 5,980,007</u> |

See accompanying notes to this schedule.

WILLCOX UNIFIED SCHOOL DISTRICT NO. 13
SCHEDULE OF THE PROPORTIONATE SHARE OF THE NET PENSION LIABILITY
ARIZONA STATE RETIREMENT SYSTEM
YEAR ENDED JUNE 30, 2015

2015

| | |
|---------------------------------------------------------------------------------------------------------------------|--------------|
| District's proportion of the net pension liability (asset) | 5.53% |
| District's proportionate share of the net pension liability (asset) | \$ 8,188,917 |
| District's covered-employee payroll | \$ 4,965,890 |
| District's proportionate share of the net pension liability (asset) as a percentage of its covered-employee payroll | 164.90% |
| Plan fiduciary net position as a percentage of the total pension liability | 69.49% |

SCHEDULE OF CONTRIBUTIONS
ARIZONA STATE RETIREMENT SYSTEM
YEAR ENDED JUNE 30, 2015

2015

| | |
|----------------------------------------------------------------------|------------------|
| Actuarially determined contribution | \$ 567,596 |
| Contributions in relation to the actuarially determined contribution | <u>567,596</u> |
| Contribution deficiency (excess) | <u><u>\$</u></u> |
| District's covered-employee payroll | \$ 5,159,935 |
| Contributions as a percentage of covered-employee payroll | 11.00% |

See accompanying notes to this schedule.

WILLCOX UNIFIED SCHOOL DISTRICT NO. 13
NOTES TO REQUIRED SUPPLEMENTARY INFORMATION
JUNE 30, 2015

NOTE 1 – BUDGETARY BASIS OF ACCOUNTING

The District budget is prepared on a basis consistent with accounting principles generally accepted in the United States of America, except for the following items.

- Certain activities reported in the General Fund are budgeted in separate funds in accordance with Arizona Revised Statutes.

The following schedule reconciles expenditures and fund balances at the end of year:

| | Total Expenditures | Fund Balances End of Year |
|-------------------------------------------------------------------------------------------------------|-----------------------|------------------------------|
| Statement of Revenues, Expenditures and Changes in Fund Balances – Governmental Funds | \$ 6,834,405 | \$ (202,805) |
| Activity budgeted as special revenue funds | (211,747) | (480,145) |
| Schedule of Revenues, Expenditures and Changes in Fund Balances – Budget and Actual – General Fund | \$ 6,622,658 | \$ (682,950) |

NOTE 2 – PENSION PLAN SCHEDULES

Actuarial Assumptions for Valuations Performed. The information presented in the required supplementary schedules was determined as part of the actuarial valuations at the dates indicated, which is the most recent actuarial valuation. The actuarial assumptions used are disclosed in the notes to the financial statements.

Factors that Affect Trends. The actuarial assumptions used in the June 30, 2013, valuation were based on the results of an actuarial experience study for the five-year period ended June 30, 2012. The purpose of the experience study was to review actual experience in relation to the actuarial assumptions in effect. The ASRS Board adopted the experience study recommended changes which were applied to the June 30, 2013, actuarial valuation. The study did not include an analysis of the assumed investment rate of return.

**COMBINING AND INDIVIDUAL
FUND FINANCIAL STATEMENTS
AND SCHEDULES**

(This page intentionally left blank)

GOVERNMENTAL FUNDS

WILLCOX UNIFIED SCHOOL DISTRICT NO. 13
COMBINING BALANCE SHEET - ALL NON-MAJOR GOVERNMENTAL FUNDS - BY FUND TYPE
JUNE 30, 2015

| | <u>Special Revenue</u> | <u>Capital Projects</u> | <u>Total Non-Major Governmental Fund</u> |
|--------------------------------------------------------------------------------|------------------------|-------------------------|--------------------------------------------------|
| <u>ASSETS</u> | | | |
| Cash and investments | \$ 506,563 | \$ 194,158 | \$ 700,721 |
| Property taxes receivable | | 17,549 | 17,549 |
| Due from governmental entities | 461,941 | 114,457 | 576,398 |
| Total assets | <u>\$ 968,504</u> | <u>\$ 326,164</u> | <u>\$ 1,294,668</u> |
| | | | |
| <u>LIABILITIES, DEFERRED INFLOWS OF RESOURCES AND FUND BALANCES</u> | | | |
| Liabilities: | | | |
| Accounts payable | \$ 82,018 | \$ 1,837 | \$ 83,855 |
| Construction contracts payable | | 92,199 | 92,199 |
| Due to other funds | 197,292 | 25,825 | 223,117 |
| Accrued payroll and employee benefits | 113,437 | | 113,437 |
| Unearned revenues | 23,112 | | 23,112 |
| Total liabilities | <u>415,859</u> | <u>119,861</u> | <u>535,720</u> |
| Deferred inflows of resources: | | | |
| Unavailable revenues - property taxes | | 14,054 | 14,054 |
| Fund balances (deficits): | | | |
| Restricted | 574,723 | 261,241 | 835,964 |
| Unassigned | (22,078) | (68,992) | (91,070) |
| Total fund balances | <u>552,645</u> | <u>192,249</u> | <u>744,894</u> |
| | | | |
| Total liabilities, deferred inflows of resources and fund balances | <u>\$ 968,504</u> | <u>\$ 326,164</u> | <u>\$ 1,294,668</u> |

WILLCOX UNIFIED SCHOOL DISTRICT NO. 13
COMBINING STATEMENT OF REVENUES, EXPENDITURES AND CHANGES IN FUND BALANCES -
ALL NON-MAJOR GOVERNMENTAL FUNDS - BY FUND TYPE
YEAR ENDED JUNE 30, 2015

| | <u>Special Revenue</u> | <u>Capital Projects</u> | <u>Total Non-Major Governmental Funds</u> |
|----------------------------------------------------------|------------------------|-------------------------|---------------------------------------------------|
| Revenues: | | | |
| Other local | \$ 334,596 | \$ 18,425 | \$ 353,021 |
| Property taxes | | 151,061 | 151,061 |
| State aid and grants | 481,695 | 721,969 | 1,203,664 |
| Federal aid, grants and reimbursements | 1,829,314 | | 1,829,314 |
| Total revenues | <u>2,645,605</u> | <u>891,455</u> | <u>3,537,060</u> |
| Expenditures: | | | |
| Current - | | | |
| Instruction | 1,332,403 | | 1,332,403 |
| Support services - students and staff | 271,935 | | 271,935 |
| Support services - administration | 120,657 | | 120,657 |
| Operation and maintenance of plant services | 99,807 | | 99,807 |
| Student transportation services | 9,175 | | 9,175 |
| Operation of non-instructional services | 463,089 | | 463,089 |
| Capital outlay | 276,922 | 703,043 | 979,965 |
| Debt service - | | | |
| Principal retirement | | 109,909 | 109,909 |
| Interest and fiscal charges | 57,239 | 27,064 | 84,303 |
| Total expenditures | <u>2,631,227</u> | <u>840,016</u> | <u>3,471,243</u> |
| Excess (deficiency) of revenues over expenditures | <u>14,378</u> | <u>51,439</u> | <u>65,817</u> |
| Other financing sources (uses): | | | |
| Transfers out | (88,710) | | (88,710) |
| Total other financing sources (uses): | <u>(88,710)</u> | | <u>(88,710)</u> |
| Changes in fund balances | <u>(74,332)</u> | <u>51,439</u> | <u>(22,893)</u> |
| Fund balances, beginning of year | 626,977 | 140,810 | 767,787 |
| Fund balances, end of year | <u>\$ 552,645</u> | <u>\$ 192,249</u> | <u>\$ 744,894</u> |

SPECIAL REVENUE FUNDS

Classroom Site - to account for the financial activity for the portion of state sales tax collections and permanent state school fund earnings as approved by the voters in 2000.

Instructional Improvement - to account for the activity of monies received from gaming revenue.

Student Success - to account for student success monies.

Title I Grants - to account for financial assistance received for the purpose of improving the teaching and learning of children failing, or most at-risk of failing, to meet challenging State academic standards.

Professional Development and Technology Grants - to account for financial assistance received to increase student academic achievement through improving teacher quality.

Title IV Grants - to account for financial assistance received for chemical abuse awareness programs and expanding projects that benefit educational and health needs of the communities.

Special Education Grants - to account for supplemental financial assistance received to provide a free, appropriate public education to disabled children.

Johnson-O'Malley - to account for financial assistance received to meet the unique educational needs of eligible Indian children.

Vocational Education - to account for financial assistance received for preparation of individuals for employment or advancement in a career not requiring a baccalaureate or advanced degree.

Homeless Education - to account for financial assistance received for the needs of homeless children.

Medicaid Reimbursement - to account for reimbursements related to specific health services provided to eligible students.

National Forest Fees - to account for monies allocated for the purposes of benefiting public schools and public roads in counties where national forests are situated.

E-Rate - to account for financial assistance received for broadband internet and telecommunication costs.

Other Federal Projects - to account for financial assistance received for other supplemental federal projects.

State Vocational Education - to account for financial assistance received for the preparation of individuals for employment.

Early Childhood Block Grant - to account for financial assistance received for preschool education.

Academic Contests - to account for financial assistance received for participation in academic contests.

Gifted - to account for financial assistance received for programs for gifted students.

Environmental Special Plate - to account for the proceeds received from the sale of environmental license plates.

Other State Projects - to account for financial assistance received for other State projects.

School Plant - to account for proceeds from the sale or lease of school property.

Food Service - to account for the financial activity of school activities that have as their purpose the preparation and serving of regular and incidental meals and snacks in connection with school functions.

Civic Center - to account for monies received from the rental of school facilities for civic activities.

Auxiliary Operations - to account for activity arising from bookstore, athletic and miscellaneous District related operations.

Extracurricular Activities Fees Tax Credit - to account for activity related to monies collected in support of extracurricular activities to be taken as a tax credit by the tax payer in accordance with A.R.S. §43-1089.01.

Gifts and Donations - to account for activity related to gifts, donations, bequests and private grants made to the District.

Insurance Proceeds - to account for the monies received from insurance claims.

Textbooks - to account for monies received from students to replace or repair lost or damaged textbooks.

Litigation Recovery - to account for monies received for and derived from litigation.

Indirect Costs - to account for monies received from federal projects for administrative costs.

Grants and Gifts to Teachers - to account for grants and gifts under \$1,500 received from private sources that are designated for use by a teacher for instructional purposes.

Joint Technical Education - to account for monies received from Joint Technical Education Districts for vocational education programs.

Intergovernmental Agreements - to account for the financial activities relating to agreements with other governments not required to be accounted for elsewhere.

WILLCOX UNIFIED SCHOOL DISTRICT NO. 13
COMBINING BALANCE SHEET - NON-MAJOR SPECIAL REVENUE FUNDS
JUNE 30, 2015

| | <u>Classroom Site</u> | <u>Instructional Improvement</u> | <u>Title I Grants</u> |
|-------------------------------------------------|-----------------------|--------------------------------------|-----------------------|
| <u>ASSETS</u> | | | |
| Cash and investments | \$ 157,589 | \$ 32,566 | \$ |
| Due from governmental entities | 35,656 | 19,769 | 130,115 |
| Total assets | <u>\$ 193,245</u> | <u>\$ 52,335</u> | <u>\$ 130,115</u> |
| <u>LIABILITIES AND FUND BALANCES</u> | | | |
| Liabilities: | | | |
| Accounts payable | \$ 2,097 | \$ | \$ 11,653 |
| Due to other funds | | | 62,046 |
| Accrued payroll and employee benefits | 9,372 | 6,330 | 56,416 |
| Unearned revenues | | | |
| Total liabilities | <u>11,469</u> | <u>6,330</u> | <u>130,115</u> |
| Fund balances (deficits): | | | |
| Restricted | 181,776 | 46,005 | |
| Unassigned | | | |
| Total fund balances | <u>181,776</u> | <u>46,005</u> | |
| Total liabilities and fund balances | <u>\$ 193,245</u> | <u>\$ 52,335</u> | <u>\$ 130,115</u> |

| <u>Professional Development and Technology Grants</u> | <u>Title IV Grants</u> | <u>Special Education Grants</u> | <u>Johnson O'Malley</u> | <u>Vocational Education</u> | <u>Homeless Education</u> |
|-------------------------------------------------------------------|-----------------------------|-----------------------------------------|-----------------------------|---------------------------------|-------------------------------|
| \$ 18,289 | \$ 36,696 | \$ 56,080 | \$ 580 | \$ 10,518 | \$ 100 |
| <u>\$ 18,289</u> | <u>\$ 36,696</u> | <u>\$ 56,080</u> | <u>\$ 580</u> | <u>\$ 10,518</u> | <u>\$ 100</u> |
| \$ 7,207 11,082 | \$ 6,385 28,854 1,457 | \$ 7,239 35,494 13,347 | \$ 580 | \$ 3,371 7,147 | \$ |
| <u>18,289</u> | <u>36,696</u> | <u>56,080</u> | <u>580</u> | <u>10,518</u> | <u>100</u> <u>100</u> |
| <u>\$ 18,289</u> | <u>\$ 36,696</u> | <u>\$ 56,080</u> | <u>\$ 580</u> | <u>\$ 10,518</u> | <u>\$ 100</u> |

(Continued)

WILLCOX UNIFIED SCHOOL DISTRICT NO. 13
COMBINING BALANCE SHEET - NON-MAJOR SPECIAL REVENUE FUNDS
JUNE 30, 2015

| | National Forest Fees | E-Rate | Other Federal Projects |
|-------------------------------------------------|-------------------------|----------------------|---------------------------|
| <u>ASSETS</u> | | | |
| Cash and investments | \$ | \$ 2,037 | \$ |
| Due from governmental entities | 17,868 | 35,446 | 23,761 |
| Total assets | \$ 17,868 | \$ 37,483 | \$ 23,761 |
| <u>LIABILITIES AND FUND BALANCES</u> | | | |
| Liabilities: | | | |
| Accounts payable | \$ | \$ 2,037 | \$ |
| Due to other funds | 17,868 | | 34,221 |
| Accrued payroll and employee benefits | | | 11,618 |
| Unearned revenues | | | |
| Total liabilities | 17,868 | 2,037 | 45,839 |
| Fund balances (deficits): | | | |
| Restricted | | 35,446 | |
| Unassigned | | | (22,078) |
| Total fund balances | | 35,446 | (22,078) |
| Total liabilities and fund balances | \$ 17,868 | \$ 37,483 | \$ 23,761 |

| <u>State Vocational Education</u> | <u>Early Childhood Block Grant</u> | <u>Academic Contests</u> | <u>Gifted</u> | <u>Environmental Special Plate</u> | <u>Other State Projects</u> |
|---------------------------------------|----------------------------------------|------------------------------|---------------|----------------------------------------|---------------------------------|
| \$ 4,601 | \$ 1 | \$ 1,547 | \$ 16 | \$ 16,542 | \$ 305 |
| <u>\$ 4,601</u> | <u>\$ 1</u> | <u>\$ 1,547</u> | <u>\$ 16</u> | <u>\$ 16,542</u> | <u>\$ 305</u> |
| \$ | \$ | \$ | \$ | \$ | \$ |
| <u>4,601</u> | <u>1</u> | <u>1,547</u> | <u>16</u> | <u>16,542</u> | <u>305</u> |
| <u>4,601</u> | <u>1</u> | <u>1,547</u> | <u>16</u> | <u>16,542</u> | <u>305</u> |
| <u>_____</u> | <u>_____</u> | <u>_____</u> | <u>_____</u> | <u>_____</u> | <u>_____</u> |
| <u>_____</u> | <u>_____</u> | <u>_____</u> | <u>_____</u> | <u>_____</u> | <u>_____</u> |
| <u>\$ 4,601</u> | <u>\$ 1</u> | <u>\$ 1,547</u> | <u>\$ 16</u> | <u>\$ 16,542</u> | <u>\$ 305</u> |

(Continued)

WILLCOX UNIFIED SCHOOL DISTRICT NO. 13
COMBINING BALANCE SHEET - NON-MAJOR SPECIAL REVENUE FUNDS
JUNE 30, 2015

| | Food Service | Civic Center | Extracurricular Activities Fees Tax Credit |
|-------------------------------------------------|------------------|-----------------|--------------------------------------------------|
| <u>ASSETS</u> | | | |
| Cash and investments | \$ 32,871 | \$ 1,253 | \$ 68,153 |
| Due from governmental entities | 8,269 | | |
| Total assets | \$ 41,140 | \$ 1,253 | \$ 68,153 |
| <u>LIABILITIES AND FUND BALANCES</u> | | | |
| Liabilities: | | | |
| Accounts payable | \$ 38,852 | \$ | \$ 1,340 |
| Due to other funds | | | |
| Accrued payroll and employee benefits | 2,288 | | |
| Unearned revenues | | | |
| Total liabilities | 41,140 | | 1,340 |
| Fund balances (deficits): | | | |
| Restricted | | 1,253 | 66,813 |
| Unassigned | | | |
| Total fund balances | | 1,253 | 66,813 |
| Total liabilities and fund balances | \$ 41,140 | \$ 1,253 | \$ 68,153 |

| <u>Textbooks</u> | <u>Joint Technical Education</u> | <u>Totals</u> |
|-----------------------------|--------------------------------------|-----------------------------|
| \$ 1,361 | \$ 187,621 | \$ 506,563 |
| | 68,894 | 461,941 |
| <u>\$ 1,361</u> | <u>\$ 256,515</u> | <u>\$ 968,504</u> |
| | | |
| \$ | \$ 1,837 | \$ 82,018 |
| | | 197,292 |
| | 12,609 | 113,437 |
| | | 23,112 |
| <u> </u> | <u> </u> | <u> </u> |
| | 14,446 | 415,859 |
| | | |
| 1,361 | 242,069 | 574,723 |
| | | (22,078) |
| <u>1,361</u> | <u>242,069</u> | <u>552,645</u> |
| | | |
| <u>\$ 1,361</u> | <u>\$ 256,515</u> | <u>\$ 968,504</u> |

WILLCOX UNIFIED SCHOOL DISTRICT NO. 13
COMBINING STATEMENT OF REVENUES, EXPENDITURES AND CHANGES IN FUND BALANCES -
NON-MAJOR SPECIAL REVENUE FUNDS
YEAR ENDED JUNE 30, 2015

| | <u>Classroom Site</u> | <u>Instructional Improvement</u> | <u>Title I Grants</u> |
|----------------------------------------------------------|-----------------------|--------------------------------------|-----------------------|
| Revenues: | | | |
| Other local | \$ 398 | \$ 1,874 | \$ |
| State aid and grants | 427,865 | 45,961 | |
| Federal aid, grants and reimbursements | | | 572,283 |
| Total revenues | <u>428,263</u> | <u>47,835</u> | <u>572,283</u> |
| Expenditures: | | | |
| Current - | | | |
| Instruction | 392,582 | 43,738 | 404,382 |
| Support services - students and staff | | | 66,624 |
| Support services - administration | | | 41,495 |
| Operation and maintenance of plant services | | | |
| Student transportation services | | | 5,895 |
| Operation of non-instructional services | | | |
| Capital outlay | | | 14,446 |
| Debt service - | | | |
| Interest and fiscal charges | | | |
| Total expenditures | <u>392,582</u> | <u>43,738</u> | <u>532,842</u> |
| Excess (deficiency) of revenues over expenditures | <u>35,681</u> | <u>4,097</u> | <u>39,441</u> |
| Other financing sources (uses): | | | |
| Transfers out | | | (39,441) |
| Total other financing sources (uses): | | | <u>(39,441)</u> |
| Changes in fund balances | <u>35,681</u> | <u>4,097</u> | |
| Fund balances (deficits), beginning of year | 146,095 | 41,908 | |
| Fund balances, end of year | <u>\$ 181,776</u> | <u>\$ 46,005</u> | <u>\$</u> |

| Professional Development and Technology Grants | Title IV Grants | Special Education Grants | Vocational Education | National Forest Fees | E-Rate |
|------------------------------------------------|-----------------|--------------------------|----------------------|----------------------|------------------|
| \$ | \$ | \$ | \$ | \$ | \$ 89 |
| 95,259 | 169,870 | 263,529 | 20,529 | 17,868 | 134,444 |
| <u>95,259</u> | <u>169,870</u> | <u>263,529</u> | <u>20,529</u> | <u>17,868</u> | <u>134,533</u> |
| 8,352 | 51,376 | 202,366 | 11,333 | 17,868 | |
| 80,184 | 50,606 | 22,959 | 4,540 | | |
| | 21,268 | 2,503 | | | 99,087 |
| 546 | 27,060 | 18,537 | 4,656 | | |
| <u>89,082</u> | <u>150,310</u> | <u>246,365</u> | <u>20,529</u> | <u>17,868</u> | <u>99,087</u> |
| <u>6,177</u> | <u>19,560</u> | <u>17,164</u> | | | <u>35,446</u> |
| <u>(6,177)</u> | <u>(19,560)</u> | <u>(17,164)</u> | | | |
| <u>(6,177)</u> | <u>(19,560)</u> | <u>(17,164)</u> | | | |
| | | | | | 35,446 |
| <u>\$</u> | <u>\$</u> | <u>\$</u> | <u>\$</u> | <u>\$</u> | <u>\$ 35,446</u> |

(Continued)

WILLCOX UNIFIED SCHOOL DISTRICT NO. 13
COMBINING STATEMENT OF REVENUES, EXPENDITURES AND CHANGES IN FUND BALANCES -
NON-MAJOR SPECIAL REVENUE FUNDS
YEAR ENDED JUNE 30, 2015

| | <u>Other Federal Projects</u> | <u>State Vocational Education</u> | <u>Other State Projects</u> |
|----------------------------------------------------------|-----------------------------------|---------------------------------------|---------------------------------|
| Revenues: | | | |
| Other local | \$ | \$ | \$ |
| State aid and grants | | 6,634 | 1,235 |
| Federal aid, grants and reimbursements | 197,986 | | |
| Total revenues | <u>197,986</u> | <u>6,634</u> | <u>1,235</u> |
| Expenditures: | | | |
| Current - | | | |
| Instruction | 62,456 | 4,519 | 1,036 |
| Support services - students and staff | | | 199 |
| Support services - administration | 23,128 | | |
| Operation and maintenance of plant services | | | |
| Student transportation services | 3,280 | | |
| Operation of non-instructional services | | | |
| Capital outlay | 49,693 | 2,115 | |
| Debt service - | | | |
| Interest and fiscal charges | 57,239 | | |
| Total expenditures | <u>195,796</u> | <u>6,634</u> | <u>1,235</u> |
| Excess (deficiency) of revenues over expenditures | <u>2,190</u> | | |
| Other financing sources (uses): | | | |
| Transfers out | (6,368) | | |
| Total other financing sources (uses): | <u>(6,368)</u> | | |
| Changes in fund balances | <u>(4,178)</u> | | |
| Fund balances (deficits), beginning of year | (17,900) | | |
| Fund balances (deficits), end of year | <u>\$ (22,078)</u> | <u>\$</u> | <u>\$</u> |

| <u>Food Service</u> | <u>Civic Center</u> | <u>Extracurricular Activities Fees Tax Credit</u> | <u>Textbooks</u> | <u>Joint Technical Education</u> | <u>Intergovernmental Agreements</u> |
|---------------------|---------------------|-----------------------------------------------------------|------------------|--------------------------------------|-----------------------------------------|
| \$ 106,921 | \$ 1,253 | \$ 24,244 | \$ 759 | \$ 166,605 | \$ 32,453 |
| <u>357,546</u> | | | | | |
| <u>464,467</u> | <u>1,253</u> | <u>24,244</u> | <u>759</u> | <u>166,605</u> | <u>32,453</u> |
| | | 21,216 | 620 | 82,906 | 27,653 |
| | | 16,276 | | 30,547 | |
| | | | | 26,683 | 5,580 |
| | | | | | 720 |
| 463,089 | | | | | |
| 4,550 | | | | 155,319 | |
| <u>467,639</u> | | <u>37,492</u> | <u>620</u> | <u>295,455</u> | <u>33,953</u> |
| <u>(3,172)</u> | <u>1,253</u> | <u>(13,248)</u> | <u>139</u> | <u>(128,850)</u> | <u>(1,500)</u> |
| | | | | | |
| <u>(3,172)</u> | <u>1,253</u> | <u>(13,248)</u> | <u>139</u> | <u>(128,850)</u> | <u>(1,500)</u> |
| 3,172 | | 80,061 | 1,222 | 370,919 | 1,500 |
| <u>\$</u> | <u>\$ 1,253</u> | <u>\$ 66,813</u> | <u>\$ 1,361</u> | <u>\$ 242,069</u> | <u>\$</u> |

(Continued)

WILLCOX UNIFIED SCHOOL DISTRICT NO. 13
COMBINING STATEMENT OF REVENUES, EXPENDITURES AND CHANGES IN FUND BALANCES -
NON-MAJOR SPECIAL REVENUE FUNDS
YEAR ENDED JUNE 30, 2015

| | Totals |
|----------------------------------------------------------|------------|
| Revenues: | |
| Other local | \$ 334,596 |
| State aid and grants | 481,695 |
| Federal aid, grants and reimbursements | 1,829,314 |
| Total revenues | 2,645,605 |
| Expenditures: | |
| Current - | |
| Instruction | 1,332,403 |
| Support services - students and staff | 271,935 |
| Support services - administration | 120,657 |
| Operation and maintenance of plant services | 99,807 |
| Student transportation services | 9,175 |
| Operation of non-instructional services | 463,089 |
| Capital outlay | 276,922 |
| Debt service - | |
| Interest and fiscal charges | 57,239 |
| Total expenditures | 2,631,227 |
| Excess (deficiency) of revenues over expenditures | 14,378 |
| Other financing sources (uses): | |
| Transfers out | (88,710) |
| Total other financing sources (uses): | (88,710) |
| Changes in fund balances | (74,332) |
| Fund balances (deficits), beginning of year | 626,977 |
| Fund balances, end of year | \$ 552,645 |

(This page intentionally left blank)

WILLCOX UNIFIED SCHOOL DISTRICT NO. 13
COMBINING SCHEDULE OF REVENUES, EXPENDITURES AND CHANGES IN FUND BALANCES -
BUDGET AND ACTUAL
NON-MAJOR SPECIAL REVENUE FUNDS
YEAR ENDED JUNE 30, 2015

| | Classroom Site | | Variance - Positive (Negative) |
|----------------------------------------------------------|---------------------|-------------------|--------------------------------------|
| | Budget | Actual | |
| Revenues: | | | |
| Other local | \$ | \$ 398 | \$ 398 |
| State aid and grants | | 427,865 | 427,865 |
| Federal aid, grants and reimbursements | | | |
| Total revenues | | <u>428,263</u> | <u>428,263</u> |
| Expenditures: | | | |
| Current - | | | |
| Instruction | 659,539 | 392,582 | 266,957 |
| Support services - students and staff | | | |
| Support services - administration | | | |
| Operation and maintenance of plant services | | | |
| Student transportation services | | | |
| Operation of non-instructional services | | | |
| Capital outlay | | | |
| Debt service - | | | |
| Interest and fiscal charges | | | |
| Total expenditures | <u>659,539</u> | <u>392,582</u> | <u>266,957</u> |
| Excess (deficiency) of revenues over expenditures | <u>(659,539)</u> | <u>35,681</u> | <u>695,220</u> |
| Other financing sources (uses): | | | |
| Transfers in | | | |
| Transfers out | | | |
| Total other financing sources (uses): | | | |
| Changes in fund balances | <u>(659,539)</u> | <u>35,681</u> | <u>695,220</u> |
| Fund balances (deficits), beginning of year | | 146,095 | 146,095 |
| Fund balances (deficits), end of year | <u>\$ (659,539)</u> | <u>\$ 181,776</u> | <u>\$ 841,315</u> |

| Instructional Improvement | | | Student Success | | |
|---------------------------|------------------|--------------------------------|--------------------|-----------------|--------------------------------|
| Budget | Actual | Variance - Positive (Negative) | Budget | Non-GAAP Actual | Variance - Positive (Negative) |
| \$ | \$ 1,874 | \$ 1,874 | \$ | \$ 35 | \$ 35 |
| | 45,961 | 45,961 | | 19,803 | 19,803 |
| | <u>47,835</u> | <u>47,835</u> | | <u>19,838</u> | <u>19,838</u> |
| 53,834 | 43,738 | 10,096 | | 2,244 | (2,244) |
| | | | 19,803 | 17,593 | 2,210 |
| | | | | 1 | (1) |
| <u>53,834</u> | <u>43,738</u> | <u>10,096</u> | <u>19,803</u> | <u>19,838</u> | <u>(35)</u> |
| <u>(53,834)</u> | <u>4,097</u> | <u>57,931</u> | <u>(19,803)</u> | | <u>19,803</u> |
| | | | | | |
| <u>(53,834)</u> | <u>4,097</u> | <u>57,931</u> | <u>(19,803)</u> | | <u>19,803</u> |
| | 41,908 | 41,908 | | | |
| <u>\$ (53,834)</u> | <u>\$ 46,005</u> | <u>\$ 99,839</u> | <u>\$ (19,803)</u> | <u>\$</u> | <u>\$ 19,803</u> |

WILLCOX UNIFIED SCHOOL DISTRICT NO. 13
COMBINING SCHEDULE OF REVENUES, EXPENDITURES AND CHANGES IN FUND BALANCES -
BUDGET AND ACTUAL
NON-MAJOR SPECIAL REVENUE FUNDS
YEAR ENDED JUNE 30, 2015

| | Title I Grants | | Variance - Positive (Negative) |
|----------------------------------------------------------|---------------------|-----------------|--------------------------------------|
| | Budget | Actual | |
| Revenues: | | | |
| Other local | \$ | \$ | \$ |
| State aid and grants | | | |
| Federal aid, grants and reimbursements | | 572,283 | 572,283 |
| Total revenues | | <u>572,283</u> | <u>572,283</u> |
| Expenditures: | | | |
| Current - | | | |
| Instruction | 946,113 | 404,382 | 541,731 |
| Support services - students and staff | | 66,624 | (66,624) |
| Support services - administration | | 41,495 | (41,495) |
| Operation and maintenance of plant services | | | |
| Student transportation services | | 5,895 | (5,895) |
| Operation of non-instructional services | | | |
| Capital outlay | | 14,446 | (14,446) |
| Debt service - | | | |
| Interest and fiscal charges | | | |
| Total expenditures | <u>946,113</u> | <u>532,842</u> | <u>413,271</u> |
| Excess (deficiency) of revenues over expenditures | <u>(946,113)</u> | <u>39,441</u> | <u>985,554</u> |
| Other financing sources (uses): | | | |
| Transfers in | | | |
| Transfers out | | (39,441) | (39,441) |
| Total other financing sources (uses): | | <u>(39,441)</u> | <u>(39,441)</u> |
| Changes in fund balances | <u>(946,113)</u> | | <u>946,113</u> |
| Fund balances (deficits), beginning of year | | | |
| Fund balances (deficits), end of year | <u>\$ (946,113)</u> | <u>\$</u> | <u>\$ 946,113</u> |

| Professional Development and Technology Grants | | | Title IV Grants | | |
|------------------------------------------------|---------|--------------------------------|-----------------|----------|--------------------------------|
| Budget | Actual | Variance - Positive (Negative) | Budget | Actual | Variance - Positive (Negative) |
| \$ | \$ | \$ | \$ | \$ | \$ |
| | 95,259 | 95,259 | | 169,870 | 169,870 |
| | 95,259 | 95,259 | | 169,870 | 169,870 |
| 116,519 | 8,352 | (8,352) | 370,450 | 51,376 | 319,074 |
| | 80,184 | 36,335 | | 50,606 | (50,606) |
| | | | | 21,268 | (21,268) |
| | 546 | (546) | | 27,060 | (27,060) |
| 116,519 | 89,082 | 27,437 | 370,450 | 150,310 | 220,140 |
| (116,519) | 6,177 | 122,696 | (370,450) | 19,560 | 390,010 |
| | (6,177) | (6,177) | | (19,560) | (19,560) |
| | (6,177) | (6,177) | | (19,560) | (19,560) |
| (116,519) | | 116,519 | (370,450) | | 370,450 |
| \$ (116,519) | \$ | \$ 116,519 | \$ (370,450) | \$ | \$ 370,450 |

WILLCOX UNIFIED SCHOOL DISTRICT NO. 13
COMBINING SCHEDULE OF REVENUES, EXPENDITURES AND CHANGES IN FUND BALANCES -
BUDGET AND ACTUAL
NON-MAJOR SPECIAL REVENUE FUNDS
YEAR ENDED JUNE 30, 2015

| | Special Education Grants | | |
|----------------------------------------------------------|--------------------------|-----------------|--------------------------------------|
| | Budget | Actual | Variance - Positive (Negative) |
| Revenues: | | | |
| Other local | \$ | \$ | \$ |
| State aid and grants | | | |
| Federal aid, grants and reimbursements | | 263,529 | 263,529 |
| Total revenues | | <u>263,529</u> | <u>263,529</u> |
| Expenditures: | | | |
| Current - | | | |
| Instruction | 238,000 | 202,366 | 35,634 |
| Support services - students and staff | | 22,959 | (22,959) |
| Support services - administration | | 2,503 | (2,503) |
| Operation and maintenance of plant services | | | |
| Student transportation services | | | |
| Operation of non-instructional services | | | |
| Capital outlay | | 18,537 | (18,537) |
| Debt service - | | | |
| Interest and fiscal charges | | | |
| Total expenditures | <u>238,000</u> | <u>246,365</u> | <u>(8,365)</u> |
| Excess (deficiency) of revenues over expenditures | <u>(238,000)</u> | <u>17,164</u> | <u>255,164</u> |
| Other financing sources (uses): | | | |
| Transfers in | | | |
| Transfers out | | (17,164) | (17,164) |
| Total other financing sources (uses): | | <u>(17,164)</u> | <u>(17,164)</u> |
| Changes in fund balances | <u>(238,000)</u> | | <u>238,000</u> |
| Fund balances (deficits), beginning of year | | | |
| Fund balances (deficits), end of year | <u>\$ (238,000)</u> | <u>\$</u> | <u>\$ 238,000</u> |

| Johnson O'Malley | | | Vocational Education | | |
|------------------|--------|--------------------------------|----------------------|--------|--------------------------------|
| Budget | Actual | Variance - Positive (Negative) | Budget | Actual | Variance - Positive (Negative) |
| \$ | \$ | \$ | \$ | \$ | \$ |
| | | | | 20,529 | 20,529 |
| | | | | 20,529 | 20,529 |
| 1,000 | | 1,000 | 20,750 | 11,333 | 9,417 |
| | | | | 4,540 | (4,540) |
| | | | | 4,656 | (4,656) |
| 1,000 | | 1,000 | 20,750 | 20,529 | 221 |
| (1,000) | | 1,000 | (20,750) | | 20,750 |
| | | | | | |
| | | | | | |
| (1,000) | | 1,000 | (20,750) | | 20,750 |
| \$ (1,000) | \$ | \$ 1,000 | \$ (20,750) | \$ | \$ 20,750 |

WILLCOX UNIFIED SCHOOL DISTRICT NO. 13
COMBINING SCHEDULE OF REVENUES, EXPENDITURES AND CHANGES IN FUND BALANCES -
BUDGET AND ACTUAL
NON-MAJOR SPECIAL REVENUE FUNDS
YEAR ENDED JUNE 30, 2015

| | Medicaid Reimbursement | | |
|----------------------------------------------------------|------------------------|--------------------|--------------------------------------|
| | Budget | Non-GAAP Actual | Variance - Positive (Negative) |
| Revenues: | | | |
| Other local | \$ | \$ 90 | \$ 90 |
| State aid and grants | | | |
| Federal aid, grants and reimbursements | | 47,379 | 47,379 |
| Total revenues | | <u>47,469</u> | <u>47,469</u> |
| Expenditures: | | | |
| Current - | | | |
| Instruction | | 3,672 | (3,672) |
| Support services - students and staff | 88,263 | 6,921 | 81,342 |
| Support services - administration | | 1,250 | (1,250) |
| Operation and maintenance of plant services | | | |
| Student transportation services | | | |
| Operation of non-instructional services | | | |
| Capital outlay | | | |
| Debt service - | | | |
| Interest and fiscal charges | | | |
| Total expenditures | <u>88,263</u> | <u>11,843</u> | <u>76,420</u> |
| Excess (deficiency) of revenues over expenditures | <u>(88,263)</u> | <u>35,626</u> | <u>123,889</u> |
| Other financing sources (uses): | | | |
| Transfers in | | | |
| Transfers out | | | |
| Total other financing sources (uses): | | | |
| Changes in fund balances | <u>(88,263)</u> | <u>35,626</u> | <u>123,889</u> |
| Fund balances (deficits), beginning of year | | 20,000 | 20,000 |
| Fund balances (deficits), end of year | <u>\$ (88,263)</u> | <u>\$ 55,626</u> | <u>\$ 143,889</u> |

| National Forest Fees | | | E-Rate | | |
|----------------------|--------|--------------------------------|--------------|-----------|--------------------------------|
| Budget | Actual | Variance - Positive (Negative) | Budget | Actual | Variance - Positive (Negative) |
| \$ | \$ | \$ | \$ | \$ 89 | \$ 89 |
| | 17,868 | 17,868 | | 134,444 | 134,444 |
| | 17,868 | 17,868 | | 134,533 | 134,533 |
| | 17,868 | (17,868) | | | |
| | | | 102,000 | 99,087 | 2,913 |
| | 17,868 | (17,868) | 102,000 | 99,087 | 2,913 |
| | | | (102,000) | 35,446 | 137,446 |
| | | | (102,000) | 35,446 | 137,446 |
| \$ | \$ | \$ | \$ (102,000) | \$ 35,446 | \$ 137,446 |

WILLCOX UNIFIED SCHOOL DISTRICT NO. 13
COMBINING SCHEDULE OF REVENUES, EXPENDITURES AND CHANGES IN FUND BALANCES -
BUDGET AND ACTUAL
NON-MAJOR SPECIAL REVENUE FUNDS
YEAR ENDED JUNE 30, 2015

| | Other Federal Projects | | Variance - Positive (Negative) |
|----------------------------------------------------------|------------------------|--------------------|--------------------------------------|
| | Budget | Actual | |
| Revenues: | | | |
| Other local | \$ | \$ | \$ |
| State aid and grants | | | |
| Federal aid, grants and reimbursements | | 197,986 | 197,986 |
| Total revenues | | <u>197,986</u> | <u>197,986</u> |
| Expenditures: | | | |
| Current - | | | |
| Instruction | 52,800 | 62,456 | (9,656) |
| Support services - students and staff | | 23,128 | (23,128) |
| Support services - administration | | 3,280 | (3,280) |
| Operation and maintenance of plant services | | 49,693 | (49,693) |
| Student transportation services | | 57,239 | (57,239) |
| Operation of non-instructional services | | 195,796 | (142,996) |
| Capital outlay | | | |
| Debt service - | | | |
| Interest and fiscal charges | | 57,239 | (57,239) |
| Total expenditures | <u>52,800</u> | <u>195,796</u> | <u>(142,996)</u> |
| Excess (deficiency) of revenues over expenditures | <u>(52,800)</u> | <u>2,190</u> | <u>54,990</u> |
| Other financing sources (uses): | | | |
| Transfers in | | | |
| Transfers out | | (6,368) | (6,368) |
| Total other financing sources (uses): | | <u>(6,368)</u> | <u>(6,368)</u> |
| Changes in fund balances | <u>(52,800)</u> | <u>(4,178)</u> | <u>48,622</u> |
| Fund balances (deficits), beginning of year | | (17,900) | (17,900) |
| Fund balances (deficits), end of year | <u>\$ (52,800)</u> | <u>\$ (22,078)</u> | <u>\$ 30,722</u> |

| State Vocational Education | | | Academic Contests | | |
|----------------------------|--------|--------------------------------|-------------------|--------|--------------------------------|
| Budget | Actual | Variance - Positive (Negative) | Budget | Actual | Variance - Positive (Negative) |
| \$ | \$ | \$ | \$ | \$ | \$ |
| | 6,634 | 6,634 | | | |
| | 6,634 | 6,634 | | | |
| 7,695 | 4,519 | 3,176 | 7,000 | | 7,000 |
| | 2,115 | (2,115) | | | |
| 7,695 | 6,634 | 1,061 | 7,000 | | 7,000 |
| (7,695) | | 7,695 | (7,000) | | 7,000 |
| | | | | | |
| (7,695) | | 7,695 | (7,000) | | 7,000 |
| \$ (7,695) | \$ | \$ 7,695 | \$ (7,000) | \$ | \$ 7,000 |

WILLCOX UNIFIED SCHOOL DISTRICT NO. 13
COMBINING SCHEDULE OF REVENUES, EXPENDITURES AND CHANGES IN FUND BALANCES -
BUDGET AND ACTUAL
NON-MAJOR SPECIAL REVENUE FUNDS
YEAR ENDED JUNE 30, 2015

| | Other State Projects | | Variance - Positive (Negative) |
|----------------------------------------------------------|----------------------|--------------|--------------------------------------|
| | Budget | Actual | |
| Revenues: | | | |
| Other local | \$ | \$ | \$ |
| State aid and grants | | 1,235 | 1,235 |
| Federal aid, grants and reimbursements | | | |
| Total revenues | | <u>1,235</u> | <u>1,235</u> |
| Expenditures: | | | |
| Current - | | | |
| Instruction | | 1,036 | (1,036) |
| Support services - students and staff | | 199 | (199) |
| Support services - administration | | | |
| Operation and maintenance of plant services | | | |
| Student transportation services | | | |
| Operation of non-instructional services | | | |
| Capital outlay | | | |
| Debt service - | | | |
| Interest and fiscal charges | | | |
| Total expenditures | | <u>1,235</u> | <u>(1,235)</u> |
| Excess (deficiency) of revenues over expenditures | | | |
| Other financing sources (uses): | | | |
| Transfers in | | | |
| Transfers out | | | |
| Total other financing sources (uses): | | | |
| Changes in fund balances | | | |
| Fund balances (deficits), beginning of year | | | |
| Fund balances (deficits), end of year | <u>\$</u> | <u>\$</u> | <u>\$</u> |

| School Plant | | | Food Service | | |
|--------------|-----------------|--------------------------------|--------------|------------|--------------------------------|
| Budget | Non-GAAP Actual | Variance - Positive (Negative) | Budget | Actual | Variance - Positive (Negative) |
| \$ | \$ 23 | \$ 23 | \$ | \$ 106,921 | \$ 106,921 |
| | | | | 357,546 | 357,546 |
| | 23 | 23 | | 464,467 | 464,467 |
| 14,000 | | 14,000 | 480,777 | 463,089 | 17,688 |
| | | | | 4,550 | (4,550) |
| 14,000 | | 14,000 | 480,777 | 467,639 | 13,138 |
| (14,000) | 23 | 14,023 | (480,777) | (3,172) | 477,605 |
| | | | | | |
| (14,000) | 23 | 14,023 | (480,777) | (3,172) | 477,605 |
| | 13,944 | 13,944 | | 3,172 | 3,172 |
| \$ (14,000) | \$ 13,967 | \$ 27,967 | \$ (480,777) | \$ | \$ 480,777 |

WILLCOX UNIFIED SCHOOL DISTRICT NO. 13
COMBINING SCHEDULE OF REVENUES, EXPENDITURES AND CHANGES IN FUND BALANCES -
BUDGET AND ACTUAL
NON-MAJOR SPECIAL REVENUE FUNDS
YEAR ENDED JUNE 30, 2015

| | Civic Center | | Variance - Positive (Negative) |
|----------------------------------------------------------|--------------------|-----------------|--------------------------------------|
| | Budget | Actual | |
| Revenues: | | | |
| Other local | \$ | \$ 1,253 | \$ 1,253 |
| State aid and grants | | | |
| Federal aid, grants and reimbursements | | | |
| Total revenues | | <u>1,253</u> | <u>1,253</u> |
| Expenditures: | | | |
| Current - | | | |
| Instruction | | | |
| Support services - students and staff | | | |
| Support services - administration | | | |
| Operation and maintenance of plant services | | | |
| Student transportation services | | | |
| Operation of non-instructional services | 23,282 | | 23,282 |
| Capital outlay | | | |
| Debt service - | | | |
| Interest and fiscal charges | | | |
| Total expenditures | <u>23,282</u> | | <u>23,282</u> |
| Excess (deficiency) of revenues over expenditures | <u>(23,282)</u> | <u>1,253</u> | <u>24,535</u> |
| Other financing sources (uses): | | | |
| Transfers in | | | |
| Transfers out | | | |
| Total other financing sources (uses): | | | |
| Changes in fund balances | <u>(23,282)</u> | <u>1,253</u> | <u>24,535</u> |
| Fund balances (deficits), beginning of year | | | |
| Fund balances (deficits), end of year | <u>\$ (23,282)</u> | <u>\$ 1,253</u> | <u>\$ 24,535</u> |

| Auxiliary Operations | | | Extracurricular Activities Fees Tax Credit | | |
|----------------------|------------------|--------------------------------|--------------------------------------------|------------------|--------------------------------|
| Budget | Non-GAAP Actual | Variance - Positive (Negative) | Budget | Actual | Variance - Positive (Negative) |
| \$ | \$ 57,590 | \$ 57,590 | \$ | \$ 24,244 | \$ 24,244 |
| | <u>57,590</u> | <u>57,590</u> | | <u>24,244</u> | <u>24,244</u> |
| 124,419 | 51,173 | 73,246 | 111,295 | 21,216 | 90,079 |
| | 9,945 | (9,945) | | 16,276 | (16,276) |
| | 6,537 | (6,537) | | | |
| | 55 | (55) | | | |
| | 3,987 | (3,987) | | | |
| | 248 | (248) | | | |
| <u>124,419</u> | <u>71,945</u> | <u>52,474</u> | <u>111,295</u> | <u>37,492</u> | <u>73,803</u> |
| <u>(124,419)</u> | <u>(14,355)</u> | <u>110,064</u> | <u>(111,295)</u> | <u>(13,248)</u> | <u>98,047</u> |
| | | | | | |
| | | | | | |
| <u>(124,419)</u> | <u>(14,355)</u> | <u>110,064</u> | <u>(111,295)</u> | <u>(13,248)</u> | <u>98,047</u> |
| | 64,138 | 64,138 | | 80,061 | 80,061 |
| <u>\$ (124,419)</u> | <u>\$ 49,783</u> | <u>\$ 174,202</u> | <u>\$ (111,295)</u> | <u>\$ 66,813</u> | <u>\$ 178,108</u> |

(Continued)

WILLCOX UNIFIED SCHOOL DISTRICT NO. 13
COMBINING SCHEDULE OF REVENUES, EXPENDITURES AND CHANGES IN FUND BALANCES -
BUDGET AND ACTUAL
NON-MAJOR SPECIAL REVENUE FUNDS
YEAR ENDED JUNE 30, 2015

| | Gifts and Donations | | |
|----------------------------------------------------------|---------------------|--------------------|--------------------------------------|
| | Budget | Non-GAAP Actual | Variance - Positive (Negative) |
| Revenues: | | | |
| Other local | \$ | \$ 4,472 | \$ 4,472 |
| State aid and grants | | | |
| Federal aid, grants and reimbursements | | | |
| Total revenues | | <u>4,472</u> | <u>4,472</u> |
| Expenditures: | | | |
| Current - | | | |
| Instruction | 29,041 | 4,848 | 24,193 |
| Support services - students and staff | | 844 | (844) |
| Support services - administration | | 75 | (75) |
| Operation and maintenance of plant services | | | |
| Student transportation services | | | |
| Operation of non-instructional services | | | |
| Capital outlay | | 2,254 | (2,254) |
| Debt service - | | | |
| Interest and fiscal charges | | | |
| Total expenditures | <u>29,041</u> | <u>8,021</u> | <u>21,020</u> |
| Excess (deficiency) of revenues over expenditures | <u>(29,041)</u> | <u>(3,549)</u> | <u>25,492</u> |
| Other financing sources (uses): | | | |
| Transfers in | | | |
| Transfers out | | | |
| Total other financing sources (uses): | | | |
| Changes in fund balances | <u>(29,041)</u> | <u>(3,549)</u> | <u>25,492</u> |
| Fund balances (deficits), beginning of year | | 21,238 | 21,238 |
| Fund balances (deficits), end of year | <u>\$ (29,041)</u> | <u>\$ 17,689</u> | <u>\$ 46,730</u> |

| Insurance Proceeds | | | Textbooks | | |
|---------------------|-------------------|--------------------------------|-------------------|-----------------|--------------------------------|
| Budget | Non-GAAP Actual | Variance - Positive (Negative) | Budget | Actual | Variance - Positive (Negative) |
| \$ | \$ 42,581 | \$ 42,581 | \$ | \$ 759 | \$ 759 |
| | <u>42,581</u> | <u>42,581</u> | | <u>759</u> | <u>759</u> |
| | | | 1,740 | 620 | 1,120 |
| 362,620 | 7,334 | 355,286 | | | |
| <u>362,620</u> | <u>7,334</u> | <u>355,286</u> | <u>1,740</u> | <u>620</u> | <u>1,120</u> |
| <u>(362,620)</u> | <u>35,247</u> | <u>397,867</u> | <u>(1,740)</u> | <u>139</u> | <u>1,879</u> |
| | | | | | |
| <u>(362,620)</u> | <u>35,247</u> | <u>397,867</u> | <u>(1,740)</u> | <u>139</u> | <u>1,879</u> |
| | 267,712 | 267,712 | | 1,222 | 1,222 |
| <u>\$ (362,620)</u> | <u>\$ 302,959</u> | <u>\$ 665,579</u> | <u>\$ (1,740)</u> | <u>\$ 1,361</u> | <u>\$ 3,101</u> |

WILLCOX UNIFIED SCHOOL DISTRICT NO. 13
COMBINING SCHEDULE OF REVENUES, EXPENDITURES AND CHANGES IN FUND BALANCES -
BUDGET AND ACTUAL
NON-MAJOR SPECIAL REVENUE FUNDS
YEAR ENDED JUNE 30, 2015

| | Litigation Recovery | | |
|----------------------------------------------------------|---------------------|--------------------|--------------------------------------|
| | Budget | Non-GAAP Actual | Variance - Positive (Negative) |
| Revenues: | | | |
| Other local | \$ | \$ 118 | \$ 118 |
| State aid and grants | | | |
| Federal aid, grants and reimbursements | | | |
| Total revenues | | <u>118</u> | <u>118</u> |
| Expenditures: | | | |
| Current - | | | |
| Instruction | | | |
| Support services - students and staff | | | |
| Support services - administration | 85,000 | 2,559 | 82,441 |
| Operation and maintenance of plant services | | | |
| Student transportation services | | | |
| Operation of non-instructional services | | | |
| Capital outlay | | | |
| Debt service - | | | |
| Interest and fiscal charges | | | |
| Total expenditures | <u>85,000</u> | <u>2,559</u> | <u>82,441</u> |
| Excess (deficiency) of revenues over expenditures | <u>(85,000)</u> | <u>(2,441)</u> | <u>82,559</u> |
| Other financing sources (uses): | | | |
| Transfers in | | | |
| Transfers out | | | |
| Total other financing sources (uses): | | | |
| Changes in fund balances | <u>(85,000)</u> | <u>(2,441)</u> | <u>82,559</u> |
| Fund balances (deficits), beginning of year | | 24,006 | 24,006 |
| Fund balances (deficits), end of year | <u>\$ (85,000)</u> | <u>\$ 21,565</u> | <u>\$ 106,565</u> |

| Indirect Costs | | | Grants and Gifts to Teachers | | |
|--------------------|------------------|--------------------------------|------------------------------|-----------|--------------------------------|
| Budget | Non-GAAP Actual | Variance - Positive (Negative) | Budget | Actual | Variance - Positive (Negative) |
| \$ | \$ 53 | \$ 53 | \$ | \$ | \$ |
| | 53 | 53 | | | |
| | 3,417 | (3,417) | 2,000 | | 2,000 |
| 82,000 | 84,655 | (2,655) | | | |
| | 2,135 | (2,135) | | | |
| <u>82,000</u> | <u>90,207</u> | <u>(8,207)</u> | <u>2,000</u> | | <u>2,000</u> |
| <u>(82,000)</u> | <u>(90,154)</u> | <u>(8,154)</u> | <u>(2,000)</u> | | <u>2,000</u> |
| | 88,710 | 88,710 | | | |
| | <u>88,710</u> | <u>88,710</u> | | | |
| <u>(82,000)</u> | <u>(1,444)</u> | <u>80,556</u> | <u>(2,000)</u> | | <u>2,000</u> |
| | 20,000 | 20,000 | | | |
| <u>\$ (82,000)</u> | <u>\$ 18,556</u> | <u>\$ 100,556</u> | <u>\$ (2,000)</u> | <u>\$</u> | <u>\$ 2,000</u> |

WILLCOX UNIFIED SCHOOL DISTRICT NO. 13
COMBINING SCHEDULE OF REVENUES, EXPENDITURES AND CHANGES IN FUND BALANCES -
BUDGET AND ACTUAL
NON-MAJOR SPECIAL REVENUE FUNDS
YEAR ENDED JUNE 30, 2015

| | Joint Technical Education | | |
|----------------------------------------------------------|---------------------------|-------------------|--------------------------------------|
| | Budget | Actual | Variance - Positive (Negative) |
| Revenues: | | | |
| Other local | \$ | \$ 166,605 | \$ 166,605 |
| State aid and grants | | | |
| Federal aid, grants and reimbursements | | | |
| Total revenues | | <u>166,605</u> | <u>166,605</u> |
| Expenditures: | | | |
| Current - | | | |
| Instruction | | 82,906 | (82,906) |
| Support services - students and staff | | 30,547 | (30,547) |
| Support services - administration | | 26,683 | (26,683) |
| Operation and maintenance of plant services | | | |
| Student transportation services | | | |
| Operation of non-instructional services | | | |
| Capital outlay | 399,491 | 155,319 | 244,172 |
| Debt service - | | | |
| Interest and fiscal charges | | | |
| Total expenditures | <u>399,491</u> | <u>295,455</u> | <u>104,036</u> |
| Excess (deficiency) of revenues over expenditures | <u>(399,491)</u> | <u>(128,850)</u> | <u>270,641</u> |
| Other financing sources (uses): | | | |
| Transfers in | | | |
| Transfers out | | | |
| Total other financing sources (uses): | | | |
| Changes in fund balances | <u>(399,491)</u> | <u>(128,850)</u> | <u>270,641</u> |
| Fund balances (deficits), beginning of year | | 370,919 | 370,919 |
| Fund balances (deficits), end of year | <u>\$ (399,491)</u> | <u>\$ 242,069</u> | <u>\$ 641,560</u> |

| Intergovernmental Agreements | | | Totals | | |
|------------------------------|----------------|--------------------------------|-----------------------|---------------------|--------------------------------|
| Budget | Actual | Variance - Positive (Negative) | Budget | Non-GAAP Actual | Variance - Positive (Negative) |
| \$ | \$ 32,453 | \$ 32,453 | \$ | \$ 439,558 | \$ 439,558 |
| | | | | 501,498 | 501,498 |
| | | | | 1,876,693 | 1,876,693 |
| | <u>32,453</u> | <u>32,453</u> | | <u>2,817,749</u> | <u>2,817,749</u> |
| 23,100 | 27,653 | (4,553) | 2,648,776 | 1,397,757 | 1,251,019 |
| | 5,580 | (5,580) | 224,585 | 307,238 | (82,653) |
| | 720 | (720) | 167,000 | 215,734 | (48,734) |
| | | | 464,620 | 109,331 | 355,289 |
| | | | 518,059 | 9,175 | (9,175) |
| | | | 399,491 | 467,076 | 50,983 |
| | | | | 279,424 | 120,067 |
| | | | | 57,239 | (57,239) |
| <u>23,100</u> | <u>33,953</u> | <u>(10,853)</u> | <u>4,422,531</u> | <u>2,842,974</u> | <u>1,579,557</u> |
| <u>(23,100)</u> | <u>(1,500)</u> | <u>21,600</u> | <u>(4,422,531)</u> | <u>(25,225)</u> | <u>4,397,306</u> |
| | | | | 88,710 | 88,710 |
| | | | | (88,710) | (88,710) |
| <u>(23,100)</u> | <u>(1,500)</u> | <u>21,600</u> | <u>(4,422,531)</u> | <u>(25,225)</u> | <u>4,397,306</u> |
| | 1,500 | 1,500 | | 1,058,015 | 1,058,015 |
| <u>\$ (23,100)</u> | <u>\$</u> | <u>\$ 23,100</u> | <u>\$ (4,422,531)</u> | <u>\$ 1,032,790</u> | <u>\$ 5,455,321</u> |

(This page intentionally left blank)

DEBT SERVICE FUND

Debt Service - to account for the accumulation of resources for, and the payment of, long-term debt principal, interest and related costs.

WILLCOX UNIFIED SCHOOL DISTRICT NO. 13
COMBINING SCHEDULE OF REVENUES, EXPENDITURES AND CHANGES IN FUND BALANCES -
BUDGET AND ACTUAL
ALL DEBT SERVICE FUNDS
YEAR ENDED JUNE 30, 2015

| | Debt Service | | Variance - Positive (Negative) |
|----------------------------------------------------------|-----------------------|-------------------|--------------------------------------|
| | Budget | Actual | |
| Revenues: | | | |
| Other local | \$ | \$ 7,302 | \$ 7,302 |
| Property taxes | | 849,942 | 849,942 |
| Total revenues | | <u>857,244</u> | <u>857,244</u> |
| Expenditures: | | | |
| Debt service - | | | |
| Principal retirement | 630,000 | 630,000 | |
| Interest and fiscal charges | 406,100 | 406,017 | 83 |
| Total expenditures | <u>1,036,100</u> | <u>1,036,017</u> | <u>83</u> |
| Excess (deficiency) of revenues over expenditures | <u>(1,036,100)</u> | <u>(178,773)</u> | <u>857,327</u> |
| Other financing sources (uses): | | | |
| Transfers in | | 19,319 | 19,319 |
| Total other financing sources (uses): | | <u>19,319</u> | <u>19,319</u> |
| Changes in fund balances | <u>(1,036,100)</u> | <u>(159,454)</u> | <u>876,646</u> |
| Fund balances, beginning of year | | 336,116 | 336,116 |
| Fund balances (deficits), end of year | <u>\$ (1,036,100)</u> | <u>\$ 176,662</u> | <u>\$ 1,212,762</u> |

CAPITAL PROJECTS FUNDS

Unrestricted Capital Outlay - to account for transactions relating to the acquisition of capital items.

Building Renewal Grant - to account for building renewal grant monies requested from the School Facilities Board that are used for infrastructure or for major upgrades, repairs, or renovations to areas, systems, or buildings that will maintain or extend their useful life.

WILLCOX UNIFIED SCHOOL DISTRICT NO. 13
COMBINING BALANCE SHEET - NON-MAJOR CAPITAL PROJECTS FUNDS
JUNE 30, 2015

| | Unrestricted Capital Outlay | Building Renewal Grant | Totals |
|------------------------------------------------------------------------------------|--------------------------------|---------------------------|-----------------------|
| <u>ASSETS</u> | | | |
| Cash and investments | \$ 194,158 | \$ | \$ 194,158 |
| Property taxes receivable | 17,549 | | 17,549 |
| Due from governmental entities | 65,425 | 49,032 | 114,457 |
| Total assets | \$ 277,132 | \$ 49,032 | \$ 326,164 |
| <u>LIABILITIES, DEFERRED INFLOWS OF RESOURCES AND FUND BALANCES</u> | | | |
| Liabilities: | | | |
| Accounts payable | \$ 1,837 | \$ | \$ 1,837 |
| Construction contracts payable | | 92,199 | 92,199 |
| Due to other funds | | 25,825 | 25,825 |
| Total liabilities | 1,837 | 118,024 | 119,861 |
| Deferred inflows of resources: | | | |
| Unavailable revenues - property taxes | 14,054 | | 14,054 |
| Fund balances (deficits): | | | |
| Restricted | 261,241 | | 261,241 |
| Unassigned | | (68,992) | (68,992) |
| Total fund balances | 261,241 | (68,992) | 192,249 |
| Total liabilities, deferred inflows of resources and fund balances | \$ 277,132 | \$ 49,032 | \$ 326,164 |

WILLCOX UNIFIED SCHOOL DISTRICT NO. 13
COMBINING STATEMENT OF REVENUES, EXPENDITURES AND CHANGES IN FUND BALANCES -
NON-MAJOR CAPITAL PROJECTS FUNDS
YEAR ENDED JUNE 30, 2015

| | Unrestricted Capital Outlay | Building Renewal Grant | Totals |
|----------------------------------------------|--------------------------------|---------------------------|------------|
| Revenues: | | | |
| Other local | \$ 18,425 | \$ | \$ 18,425 |
| Property taxes | 151,061 | | 151,061 |
| State aid and grants | 186,911 | 535,058 | 721,969 |
| Total revenues | 356,397 | 535,058 | 891,455 |
| Expenditures: | | | |
| Capital outlay | 96,922 | 606,121 | 703,043 |
| Debt service - | | | |
| Principal retirement | 109,909 | | 109,909 |
| Interest and fiscal charges | 27,064 | | 27,064 |
| Total expenditures | 233,895 | 606,121 | 840,016 |
| Changes in fund balances | 122,502 | (71,063) | 51,439 |
| Fund balances, beginning of year | 138,739 | 2,071 | 140,810 |
| Fund balances (deficits), end of year | \$ 261,241 | \$ (68,992) | \$ 192,249 |

WILLCOX UNIFIED SCHOOL DISTRICT NO. 13
COMBINING SCHEDULE OF REVENUES, EXPENDITURES AND CHANGES IN FUND BALANCES -
BUDGET AND ACTUAL
ALL CAPITAL PROJECTS FUNDS
YEAR ENDED JUNE 30, 2015

| | Unrestricted Capital Outlay | | Variance - Positive (Negative) |
|----------------------------------------------------------|-----------------------------|-------------------|--------------------------------------|
| | Budget | Actual | |
| Revenues: | | | |
| Other local | \$ | \$ 18,425 | \$ 18,425 |
| Property taxes | | 151,061 | 151,061 |
| State aid and grants | | 186,911 | 186,911 |
| Total revenues | | <u>356,397</u> | <u>356,397</u> |
| Expenditures: | | | |
| Capital outlay | 96,921 | 96,922 | (1) |
| Debt service - | | | |
| Principal retirement | 109,909 | 109,909 | |
| Interest and fiscal charges | 27,064 | 27,064 | |
| Total expenditures | <u>233,894</u> | <u>233,895</u> | <u>(1)</u> |
| Excess (deficiency) of revenues over expenditures | <u>(233,894)</u> | <u>122,502</u> | <u>356,396</u> |
| Other financing sources (uses): | | | |
| Transfers out | | | |
| Total other financing sources (uses): | | | |
| Changes in fund balances | <u>(233,894)</u> | <u>122,502</u> | <u>356,396</u> |
| Fund balances, beginning of year | | 138,739 | 138,739 |
| Fund balances (deficits), end of year | <u>\$ (233,894)</u> | <u>\$ 261,241</u> | <u>\$ 495,135</u> |

| Bond Building | | | Building Renewal Grant | | |
|-----------------------|--------------------|--------------------------------|------------------------|--------------------|--------------------------------|
| Budget | Actual | Variance - Positive (Negative) | Budget | Actual | Variance - Positive (Negative) |
| \$ | \$ 20,164 | \$ 20,164 | \$ | \$ | \$ |
| | <u>20,164</u> | <u>20,164</u> | | <u>535,058</u> | <u>535,058</u> |
| | | | | <u>535,058</u> | <u>535,058</u> |
| 4,950,856 | 4,660,172 | 290,684 | 296,323 | 606,121 | (309,798) |
| <u>4,950,856</u> | <u>4,660,172</u> | <u>290,684</u> | <u>296,323</u> | <u>606,121</u> | <u>(309,798)</u> |
| <u>(4,950,856)</u> | <u>(4,640,008)</u> | <u>310,848</u> | <u>(296,323)</u> | <u>(71,063)</u> | <u>225,260</u> |
| | <u>(19,319)</u> | <u>(19,319)</u> | | | |
| | <u>(19,319)</u> | <u>(19,319)</u> | | | |
| <u>(4,950,856)</u> | <u>(4,659,327)</u> | <u>291,529</u> | <u>(296,323)</u> | <u>(71,063)</u> | <u>225,260</u> |
| | 4,857,497 | 4,857,497 | | 2,071 | 2,071 |
| <u>\$ (4,950,856)</u> | <u>\$ 198,170</u> | <u>\$ 5,149,026</u> | <u>\$ (296,323)</u> | <u>\$ (68,992)</u> | <u>\$ 227,331</u> |

(Continued)

WILLCOX UNIFIED SCHOOL DISTRICT NO. 13
COMBINING SCHEDULE OF REVENUES, EXPENDITURES AND CHANGES IN FUND BALANCES -
BUDGET AND ACTUAL
ALL CAPITAL PROJECTS FUNDS
YEAR ENDED JUNE 30, 2015

| | Totals | | Variance - Positive (Negative) |
|----------------------------------------------------------|-----------------------|--------------------|--------------------------------------|
| | Budget | Actual | |
| Revenues: | | | |
| Other local | \$ | \$ 38,589 | \$ 38,589 |
| Property taxes | | 151,061 | 151,061 |
| State aid and grants | | 721,969 | 721,969 |
| Total revenues | | <u>911,619</u> | <u>911,619</u> |
| Expenditures: | | | |
| Capital outlay | 5,344,100 | 5,363,215 | (19,115) |
| Debt service - | | | |
| Principal retirement | 109,909 | 109,909 | |
| Interest and fiscal charges | 27,064 | 27,064 | |
| Total expenditures | <u>5,481,073</u> | <u>5,500,188</u> | <u>(19,115)</u> |
| Excess (deficiency) of revenues over expenditures | <u>(5,481,073)</u> | <u>(4,588,569)</u> | <u>892,504</u> |
| Other financing sources (uses): | | | |
| Transfers out | | (19,319) | (19,319) |
| Total other financing sources (uses): | | <u>(19,319)</u> | <u>(19,319)</u> |
| Changes in fund balances | <u>(5,481,073)</u> | <u>(4,607,888)</u> | <u>873,185</u> |
| Fund balances, beginning of year | | 4,998,307 | 4,998,307 |
| Fund balances (deficits), end of year | <u>\$ (5,481,073)</u> | <u>\$ 390,419</u> | <u>\$ 5,871,492</u> |

AGENCY FUNDS

Student Activities - to account for monies raised by students to finance student clubs and organizations but held by the District as an agent.

Employee Withholding - to account for voluntary deductions and employee payroll checks temporarily held by the District as an agent.

WILLCOX UNIFIED SCHOOL DISTRICT NO. 13
COMBINING STATEMENT OF ASSETS AND LIABILITIES
AGENCY FUNDS
JUNE 30, 2015

| | Student Activities | Employee Insurance | Totals |
|-------------------------------|-----------------------|-----------------------|------------|
| <u>ASSETS</u> | | | |
| Cash and investments | \$ 87,404 | \$ 41,895 | \$ 129,299 |
| Total assets | \$ 87,404 | \$ 41,895 | \$ 129,299 |
| <u>LIABILITIES</u> | | | |
| Deposits held for others | \$ | \$ 41,895 | \$ 41,895 |
| Due to student groups | 87,404 | | 87,404 |
| Total liabilities | \$ 87,404 | \$ 41,895 | \$ 129,299 |

WILLCOX UNIFIED SCHOOL DISTRICT NO. 13
COMBINING STATEMENT OF CHANGES IN ASSETS AND LIABILITIES
AGENCY FUNDS
YEAR ENDED JUNE 30, 2015

| | <u>Beginning Balance</u> | <u>Additions</u> | <u>Deductions</u> | <u>Ending Balance</u> |
|---------------------------------------|------------------------------|--------------------------|--------------------------|---------------------------|
| <u>STUDENT ACTIVITIES FUND</u> | | | | |
| <u>Assets</u> | | | | |
| Cash and investments | \$ <u>93,339</u> | \$ <u>80,858</u> | \$ <u>86,793</u> | \$ <u>87,404</u> |
| Total assets | \$ <u><u>93,339</u></u> | \$ <u><u>80,858</u></u> | \$ <u><u>86,793</u></u> | \$ <u><u>87,404</u></u> |
| <u>Liabilities</u> | | | | |
| Due to student groups | \$ <u>93,339</u> | \$ <u>80,858</u> | \$ <u>86,793</u> | \$ <u>87,404</u> |
| Total liabilities | \$ <u><u>93,339</u></u> | \$ <u><u>80,858</u></u> | \$ <u><u>86,793</u></u> | \$ <u><u>87,404</u></u> |
| <u>EMPLOYEE INSURANCE FUND</u> | | | | |
| <u>Assets</u> | | | | |
| Cash and investments | \$ <u>46,067</u> | \$ <u>236,495</u> | \$ <u>240,667</u> | \$ <u>41,895</u> |
| Total assets | \$ <u><u>46,067</u></u> | \$ <u><u>236,495</u></u> | \$ <u><u>240,667</u></u> | \$ <u><u>41,895</u></u> |
| <u>Liabilities</u> | | | | |
| Deposits held for others | \$ <u>46,067</u> | \$ <u>236,495</u> | \$ <u>240,667</u> | \$ <u>41,895</u> |
| Total liabilities | \$ <u><u>46,067</u></u> | \$ <u><u>236,495</u></u> | \$ <u><u>240,667</u></u> | \$ <u><u>41,895</u></u> |
| <u>TOTAL AGENCY FUNDS</u> | | | | |
| <u>Assets</u> | | | | |
| Cash and investments | \$ <u>139,406</u> | \$ <u>317,353</u> | \$ <u>327,460</u> | \$ <u>129,299</u> |
| Total assets | \$ <u><u>139,406</u></u> | \$ <u><u>317,353</u></u> | \$ <u><u>327,460</u></u> | \$ <u><u>129,299</u></u> |
| <u>Liabilities</u> | | | | |
| Deposits held for others | \$ <u>46,067</u> | \$ <u>236,495</u> | \$ <u>240,667</u> | \$ <u>41,895</u> |
| Due to student groups | <u>93,339</u> | <u>80,858</u> | <u>86,793</u> | <u>87,404</u> |
| Total liabilities | \$ <u><u>139,406</u></u> | \$ <u><u>317,353</u></u> | \$ <u><u>327,460</u></u> | \$ <u><u>129,299</u></u> |

(This page intentionally left blank)

STATISTICAL SECTION

The statistical section presents financial statement trends as well as detailed financial and operational information not available elsewhere in the report. The statistical section is intended to enhance the reader's understanding of the information presented in the financial statements, notes to the financial statements, and other supplementary information presented in this report. The statistical section is comprised of the five categories of statistical information presented below.

Financial Trends

These schedules contain information on financial trends to help the reader understand how the District's financial position and financial activities have changed over time.

Revenue Capacity

These schedules contain information to help the reader assess the factors affecting the District's ability to generate revenue.

Debt Capacity

These schedules present information to help the reader evaluate the District's current levels of outstanding debt as well as assess the District's ability to make debt payments and/or issue additional debt in the future.

Demographic and Economic Information

These schedules present various demographic and economic indicators to help the reader understand the environment in which the District's financial activities take place and to help make comparisons with other school districts.

Operating Information

These schedules contain information about the District's operations and various resources to help the reader draw conclusions as to how the District's financial information relates to the services provided by the District.

Due to cost considerations for the accumulation of data, the District has elected to present less than ten years of data, or data from less than nine years prior, for certain statistical schedules. This information will be accumulated and reported each year until the complete ten years of data is presented.

(This page intentionally left blank)

WILLCOX UNIFIED SCHOOL DISTRICT NO. 13
NET POSITION BY COMPONENT
LAST SEVEN FISCAL YEARS
(Accrual basis of accounting)

| | Fiscal Year Ended June 30 | | | | |
|----------------------------------|----------------------------------|--------------------|--------------------|--------------------|--------------------|
| | <u>2015</u> | <u>2014</u> | <u>2013</u> | <u>2012</u> | <u>2011</u> |
| Net Position: | | | | | |
| Net investment in capital assets | \$ 7,575,784 | \$ 7,193,206 | \$ 7,743,145 | \$ 7,312,959 | \$ 7,017,462 |
| Restricted | 1,091,776 | 1,480,142 | 1,106,148 | 2,007,358 | 2,172,778 |
| Unrestricted | (8,353,582) | (818,545) | 1,097,010 | 980,439 | 401,634 |
| Total net position | \$ 313,978 | \$ 7,854,803 | \$ 9,946,303 | \$ 10,300,756 | \$ 9,591,874 |
| | <u>2010</u> | <u>2009</u> | | | |
| Net Position: | | | | | |
| Net investment in capital assets | \$ 7,762,816 | \$ 7,805,550 | | | |
| Restricted | 656,784 | 938,218 | | | |
| Unrestricted | 1,154,561 | 737,708 | | | |
| Total net position | \$ 9,574,161 | \$ 9,481,476 | | | |

Source: The source of this information is the District's financial records.

Note: The decrease in net position in fiscal year 2015 is due to the recognition of the net pension liabilities.

WILLCOX UNIFIED SCHOOL DISTRICT NO. 13
EXPENSES, PROGRAM REVENUES, AND NET (EXPENSE)/REVENUE
LAST SEVEN FISCAL YEARS
(Accrual basis of accounting)

| | Fiscal Year Ended June 30 | | | | |
|---------------------------------------------|----------------------------------|-----------------------|-----------------------|-----------------------|-----------------------|
| | <u>2015</u> | <u>2014</u> | <u>2013</u> | <u>2012</u> | <u>2011</u> |
| Expenses | | | | | |
| Instruction | \$ 5,860,974 | \$ 5,917,686 | \$ 6,419,604 | \$ 7,298,894 | \$ 5,815,978 |
| Support services - students and staff | 879,573 | 857,092 | 1,051,781 | 1,209,717 | 1,254,750 |
| Support services - administration | 1,417,366 | 1,493,369 | 1,506,636 | 1,589,413 | 1,380,468 |
| Operation and maintenance of plant services | 1,073,945 | 1,122,811 | 1,225,873 | 1,080,689 | 1,157,958 |
| Student transportation services | 496,075 | 546,392 | 685,025 | 703,686 | 588,556 |
| Operation of non-instructional services | 487,478 | 474,201 | 531,094 | 558,170 | 514,836 |
| Interest on long-term debt | 474,880 | 431,531 | 437,739 | 45,581 | 2,119 |
| Total expenses | <u>10,690,291</u> | <u>10,843,082</u> | <u>11,857,752</u> | <u>12,486,150</u> | <u>10,714,665</u> |
| Program Revenues | | | | | |
| Charges for services: | | | | | |
| Instruction | 264,827 | 462,988 | 314,432 | 300,412 | 243,275 |
| Operation of non-instructional services | 106,876 | 134,415 | 137,094 | 130,729 | 220,449 |
| Other activities | 1,253 | 1,224 | 27,032 | 46,294 | 51,326 |
| Operating grants and contributions | 1,801,676 | 1,407,817 | 1,456,094 | 1,837,451 | 1,663,556 |
| Capital grants and contributions | 652,111 | 77,029 | 1,665,715 | 3,136,420 | 1,371,714 |
| Total program revenues | <u>2,826,743</u> | <u>2,083,473</u> | <u>3,600,367</u> | <u>5,451,306</u> | <u>3,550,320</u> |
| Net (Expense)/Revenue | <u>\$ (7,863,548)</u> | <u>\$ (8,759,609)</u> | <u>\$ (8,257,385)</u> | <u>\$ (7,034,844)</u> | <u>\$ (7,164,345)</u> |

WILLCOX UNIFIED SCHOOL DISTRICT NO. 13
EXPENSES, PROGRAM REVENUES, AND NET (EXPENSE)/REVENUE
LAST SEVEN FISCAL YEARS
(Accrual basis of accounting)

| | <u>2010</u> | <u>2009</u> |
|---------------------------------------------|-----------------------|-----------------------|
| Expenses | | |
| Instruction | \$ 6,215,688 | \$ 6,233,894 |
| Support services - students and staff | 1,209,586 | 1,350,492 |
| Support services - administration | 1,253,303 | 1,151,183 |
| Operation and maintenance of plant services | 1,123,842 | 1,180,577 |
| Student transportation services | 580,449 | 558,745 |
| Operation of non-instructional services | 630,153 | 712,142 |
| Interest on long-term debt | 4,129 | 10,002 |
| Total expenses | <u>11,017,150</u> | <u>11,197,035</u> |
| Program Revenues | | |
| Charges for services: | | |
| Instruction | 379,921 | 305,748 |
| Operation of non-instructional services | 206,338 | 262,665 |
| Other activities | 101,705 | 78,121 |
| Operating grants and contributions | 1,759,495 | 1,783,361 |
| Capital grants and contributions | 582,535 | 54,946 |
| Total program revenues | <u>3,029,994</u> | <u>2,484,841</u> |
| Net (Expense)/Revenue | <u>\$ (7,987,156)</u> | <u>\$ (8,712,194)</u> |

Source: The source of this information is the District's financial records.

WILLCOX UNIFIED SCHOOL DISTRICT NO. 13
GENERAL REVENUES AND TOTAL CHANGES IN NET POSITION
LAST SEVEN FISCAL YEARS
(Accrual basis of accounting)

| | Fiscal Year Ended June 30 | | | | |
|---------------------------------------------|----------------------------------|-----------------------|---------------------|-------------------|-------------------|
| | <u>2015</u> | <u>2014</u> | <u>2013</u> | <u>2012</u> | <u>2011</u> |
| Net (Expense)/Revenue | \$ (7,863,548) | \$ (8,759,609) | \$ (8,257,385) | \$ (7,034,844) | \$ (7,164,345) |
| General Revenues: | | | | | |
| Taxes: | | | | | |
| Property taxes, levied for general purposes | 3,997,699 | 1,564,053 | 3,044,781 | 3,051,719 | 2,229,380 |
| Property taxes, levied for debt service | 837,637 | 1,259,743 | 745,396 | | |
| Property taxes, levied for capital outlay | 151,889 | 146,145 | 110,302 | 128,105 | 184,985 |
| Investment income | 32,292 | 23,950 | 30,809 | 17,434 | 4,636 |
| Unrestricted county aid | 306,068 | 323,492 | 338,807 | 297,536 | 251,618 |
| Unrestricted state aid | 3,887,650 | 3,533,245 | 3,573,907 | 4,176,947 | 4,757,357 |
| Unrestricted federal aid | 51,651 | 64,517 | 58,930 | 71,985 | 104,515 |
| Total general revenues | <u>9,264,886</u> | <u>6,915,145</u> | <u>7,902,932</u> | <u>7,743,726</u> | <u>7,532,491</u> |
| Changes in Net Position | <u>\$ 1,401,338</u> | <u>\$ (1,844,464)</u> | <u>\$ (354,453)</u> | <u>\$ 708,882</u> | <u>\$ 368,146</u> |

WILLCOX UNIFIED SCHOOL DISTRICT NO. 13
GENERAL REVENUES AND TOTAL CHANGES IN NET POSITION
LAST SEVEN FISCAL YEARS
(Accrual basis of accounting)

| | <u>2010</u> | <u>2009</u> |
|---------------------------------------------|------------------|---------------------|
| Net (Expense)/Revenue | \$ (7,987,156) | \$ (8,712,194) |
| General Revenues: | | |
| Taxes: | | |
| Property taxes, levied for general purposes | 1,616,603 | 1,675,649 |
| Property taxes, levied for capital outlay | 567,838 | 499,582 |
| Investment income | 11,793 | 25,385 |
| Unrestricted county aid | 208,133 | |
| Unrestricted state aid | 4,982,795 | 5,604,275 |
| Total general revenues | <u>8,079,841</u> | <u>7,804,891</u> |
| Changes in Net Position | <u>\$ 92,685</u> | <u>\$ (907,303)</u> |

Source: The source of this information is the District's financial records.

(Concluded)

WILLCOX UNIFIED SCHOOL DISTRICT NO. 13
FUND BALANCES - GOVERNMENTAL FUNDS
LAST SEVEN FISCAL YEARS
(Modified accrual basis of accounting)

| | Fiscal Year Ended June 30 | | | | |
|------------------------------------|----------------------------------|-----------------------|---------------------|---------------------|---------------------|
| | <u>2015</u> | <u>2014</u> | <u>2013</u> | <u>2012</u> | <u>2011</u> |
| General Fund: | | | | | |
| Unassigned | \$ (202,805) | \$ (1,233,634) | \$ 609,176 | \$ 1,032,570 | \$ 525,928 |
| Unreserved | | | | | |
| Total General Fund | <u>\$ (202,805)</u> | <u>\$ (1,233,634)</u> | <u>\$ 609,176</u> | <u>\$ 1,032,570</u> | <u>\$ 525,928</u> |
| All Other Governmental Funds: | | | | | |
| Nonspendable | \$ | \$ | \$ | \$ 10,639 | \$ 8,276 |
| Restricted | 1,210,796 | 6,247,012 | 1,053,201 | 8,538,670 | 1,068,088 |
| Unassigned | (91,070) | (17,900) | (24,630) | | (64,259) |
| Total all other governmental funds | <u>\$ 1,119,726</u> | <u>\$ 6,229,112</u> | <u>\$ 1,028,571</u> | <u>\$ 8,549,309</u> | <u>\$ 1,012,105</u> |

(Continued)

WILLCOX UNIFIED SCHOOL DISTRICT NO. 13
FUND BALANCES - GOVERNMENTAL FUNDS
LAST SEVEN FISCAL YEARS
(Modified accrual basis of accounting)

| | <u>2010</u> | <u>2009</u> |
|------------------------------------|-------------------|---------------------|
| General Fund: | | |
| Unreserved | \$ 240,239 | \$ (220,181) |
| Total General Fund | <u>\$ 240,239</u> | <u>\$ (220,181)</u> |
| | | |
| All Other Governmental Funds: | | |
| Reserved | \$ 7,065 | \$ |
| Unreserved, reported in: | | |
| Special revenue funds | 944,324 | 571,053 |
| Capital projects funds | | 81,015 |
| Debt service fund | | |
| Total all other governmental funds | <u>\$ 951,389</u> | <u>\$ 652,068</u> |

Source: The source of this information is the District's financial records.

Note: The provisions of the Governmental Accounting Standards Board (GASB) Statement No. 54 were adopted in fiscal year 2011. The standard replaces the previous reserved and unreserved fund balance categories with the following five fund balance classifications: nonspendable, restricted, committed, assigned, and unassigned fund balance.

(Concluded)

WILLCOX UNIFIED SCHOOL DISTRICT NO. 13
GOVERNMENTAL FUNDS REVENUES
LAST SEVEN FISCAL YEARS
(Modified accrual basis of accounting)

| | Fiscal Year Ended June 30 | | | | |
|-----------------------------------|----------------------------------|---------------------|---------------------|----------------------|---------------------|
| | <u>2015</u> | <u>2014</u> | <u>2013</u> | <u>2012</u> | <u>2011</u> |
| Federal sources: | | | | | |
| Federal grants | \$ 1,523,419 | \$ 1,166,840 | \$ 1,389,311 | \$ 2,580,481 | \$ 1,303,741 |
| State Fiscal Stabilization (ARRA) | | | | 695,301 | 343,588 |
| Education Jobs | | | | 259,873 | 7,379 |
| National School Lunch Program | 357,546 | 342,439 | 325,080 | 344,872 | 309,956 |
| Total federal sources | <u>1,880,965</u> | <u>1,509,279</u> | <u>1,714,391</u> | <u>3,880,527</u> | <u>1,964,664</u> |
| State sources: | | | | | |
| State equalization assistance | 3,394,021 | 2,752,292 | 3,147,722 | 3,762,525 | 4,389,331 |
| State grants | 7,869 | 9,806 | 23,862 | 43,254 | 41,807 |
| School Facilities Board | 535,058 | 280,649 | | | |
| Other revenues | 493,629 | 500,304 | 417,681 | 414,517 | 366,871 |
| Total state sources | <u>4,430,577</u> | <u>3,543,051</u> | <u>3,589,265</u> | <u>4,220,296</u> | <u>4,798,009</u> |
| Local sources: | | | | | |
| Property taxes | 4,818,876 | 3,079,141 | 3,793,051 | 3,129,560 | 2,407,038 |
| County aid | 306,068 | 323,492 | 338,807 | 297,536 | 251,618 |
| Food service sales | 106,876 | 134,415 | 137,094 | 171,767 | 220,449 |
| Investment income | 32,292 | 23,950 | 30,809 | 17,434 | 4,636 |
| Other revenues | 347,626 | 494,490 | 383,308 | 358,150 | 351,846 |
| Total local sources | <u>5,611,738</u> | <u>4,055,488</u> | <u>4,683,069</u> | <u>3,974,447</u> | <u>3,235,587</u> |
| Total revenues | <u>\$ 11,923,280</u> | <u>\$ 9,107,818</u> | <u>\$ 9,986,725</u> | <u>\$ 12,075,270</u> | <u>\$ 9,998,260</u> |

(Continued)

WILLCOX UNIFIED SCHOOL DISTRICT NO. 13
GOVERNMENTAL FUNDS REVENUES
LAST SEVEN FISCAL YEARS
(Modified accrual basis of accounting)

| | <u>2010</u> | <u>2009</u> |
|-----------------------------------|-----------------------------|-----------------------------|
| Federal sources: | | |
| Federal grants | \$ 1,861,506 | \$ 1,362,968 |
| State Fiscal Stabilization (ARRA) | 696,813 | |
| National School Lunch Program | 407,986 | 395,863 |
| Total federal sources | <u>2,966,305</u> | <u>1,758,831</u> |
| State sources: | | |
| State equalization assistance | 4,598,969 | 5,132,868 |
| State grants | 31,411 | 53,088 |
| Other revenues | 394,011 | 535,333 |
| Total state sources | <u>5,024,391</u> | <u>5,721,289</u> |
| Local sources: | | |
| Property taxes | 2,190,704 | 2,150,265 |
| County aid | 208,133 | 81 |
| Food service sales | 169,681 | 178,447 |
| Investment income | 11,793 | 25,858 |
| Other revenues | 538,196 | 507,745 |
| Total local sources | <u>3,118,507</u> | <u>2,862,396</u> |
| Total revenues | <u><u>\$ 11,109,203</u></u> | <u><u>\$ 10,342,516</u></u> |

Source: The source of this information is the District's financial records.

(Concluded)

WILLCOX UNIFIED SCHOOL DISTRICT NO. 13
GOVERNMENTAL FUNDS EXPENDITURES AND DEBT SERVICE RATIO
LAST SEVEN FISCAL YEARS
(Modified accrual basis of accounting)

| | Fiscal Year Ended June 30 | | | | |
|---------------------------------------------------------|----------------------------------|----------------------|----------------------|----------------------|----------------------|
| | <u>2015</u> | <u>2014</u> | <u>2013</u> | <u>2012</u> | <u>2011</u> |
| Expenditures: | | | | | |
| Current - | | | | | |
| Instruction | \$ 5,029,248 | \$ 4,772,255 | \$ 4,933,555 | \$ 4,858,960 | \$ 5,200,477 |
| Support services - students and staff | 842,508 | 845,827 | 901,908 | 1,031,117 | 1,182,553 |
| Support services - administration | 1,414,139 | 1,406,854 | 1,371,391 | 1,398,106 | 1,284,416 |
| Operation and maintenance of plant services | 922,001 | 986,350 | 1,064,751 | 1,007,148 | 1,084,091 |
| Student transportation services | 437,658 | 456,884 | 491,559 | 509,654 | 479,590 |
| Operation of non-instructional services | 483,415 | 474,264 | 496,174 | 536,049 | 506,415 |
| Capital outlay | 5,642,639 | 780,977 | 9,248,287 | 4,297,959 | 499,242 |
| Debt service - | | | | | |
| Interest and fiscal charges | 490,320 | 446,971 | 437,739 | 45,581 | 2,119 |
| Principal retirement | 739,909 | 711,327 | 603,272 | | 38,563 |
| Bond issuance costs | | 138,441 | | 186,478 | |
| Total expenditures | <u>\$ 16,001,837</u> | <u>\$ 11,020,150</u> | <u>\$ 19,548,636</u> | <u>\$ 13,871,052</u> | <u>\$ 10,277,466</u> |
| Expenditures for capitalized assets | \$ 5,314,496 | \$ 805,750 | \$ 8,144,897 | \$ 2,950,867 | \$ 114,476 |
| Debt service as a percentage of noncapital expenditures | 12% | 11% | 9% | 0% | 0% |

(Continued)

WILCOX UNIFIED SCHOOL DISTRICT NO. 13
GOVERNMENTAL FUNDS EXPENDITURES AND DEBT SERVICE RATIO
LAST SEVEN FISCAL YEARS
(Modified accrual basis of accounting)

| | <u>2010</u> | <u>2009</u> |
|----------------------------------------------------------------|----------------------|----------------------|
| Expenditures: | | |
| Current - | | |
| Instruction | \$ 5,337,833 | \$ 5,395,558 |
| Support services - students and staff | 1,141,176 | 1,305,258 |
| Support services - administration | 1,179,043 | 1,052,660 |
| Operation and maintenance of plant services | 1,064,226 | 1,123,875 |
| Student transportation services | 469,898 | 447,035 |
| Operation of non-instructional services | 627,577 | 668,962 |
| Capital outlay | 1,067,462 | 635,568 |
| Debt service - | | |
| Interest and fiscal charges | 4,129 | 10,002 |
| Principal retirement | 36,553 | 99,865 |
| Bond issuance costs | | |
| Total expenditures | <u>\$ 10,927,897</u> | <u>\$ 10,738,783</u> |
| Expenditures for capitalized assets | \$ 700,946 | \$ 31,121 |
| Debt service as a percentage of noncapital expenditures | 0% | 1% |

Source: The source of this information is the District's financial records.

(Concluded)

WILLCOX UNIFIED SCHOOL DISTRICT NO. 13
OTHER FINANCING SOURCES AND USES AND NET CHANGES IN FUND BALANCES - GOVERNMENTAL FUNDS
LAST SEVEN FISCAL YEARS
(Modified accrual basis of accounting)

| | Fiscal Year Ended June 30 | | | | |
|----------------------------------------------------------|---------------------------|----------------|----------------|----------------|--------------|
| | <u>2015</u> | <u>2014</u> | <u>2013</u> | <u>2012</u> | <u>2011</u> |
| Excess (deficiency) of revenues over expenditures | \$ (4,078,557) | \$ (1,912,332) | \$ (9,561,911) | \$ (1,795,782) | \$ (279,206) |
| Other financing sources (uses): | | | | | |
| Premium on sale of bonds | | 165,063 | | 247,036 | |
| Capital lease agreements | | | 151,586 | 1,421,272 | |
| Transfers in | 108,029 | 112,602 | 71,424 | 178,549 | 56,642 |
| Transfers out | (108,029) | (112,602) | (71,424) | (178,549) | (56,642) |
| Insurance recovery | | | 1,476,832 | 973,957 | |
| Issuance of school improvement bonds | | 5,105,000 | | 7,195,000 | |
| Total other financing sources (uses) | (4,078,557) | 5,270,063 | 1,628,418 | 9,837,265 | (279,206) |
| Changes in fund balances | \$ (4,078,557) | \$ 3,357,731 | \$ (7,933,493) | \$ 8,041,483 | \$ (279,206) |

| | <u>2010</u> | <u>2009</u> |
|----------------------------------------------------------|-------------|--------------|
| Excess (deficiency) of revenues over expenditures | \$ 181,306 | \$ (396,267) |
| Other financing sources (uses): | | |
| Transfers in | 719,350 | 61,757 |
| Transfers out | (719,350) | (61,757) |
| Total other financing sources (uses) | (4,078,557) | 5,270,063 |
| Changes in fund balances | \$ 181,306 | \$ (396,267) |

Source: The source of this information is the District's financial records.

WILLCOX UNIFIED SCHOOL DISTRICT NO. 13
PRIMARY ASSESSED VALUE AND ESTIMATED ACTUAL VALUE OF TAXABLE PROPERTY BY CLASS
LAST SEVEN FISCAL YEARS

| <u>Class</u> | <u>Fiscal Year</u> | | | | |
|-----------------------------------------------------------|----------------------|----------------------|----------------------|----------------------|----------------------|
| | <u>2015</u> | <u>2014</u> | <u>2013</u> | <u>2012</u> | <u>2011</u> |
| Commercial, Industrial, Utilities and Mining | \$ 24,673,004 | \$ 26,272,822 | \$ 28,430,956 | \$ 28,875,203 | \$ 31,096,394 |
| Agricultural and Vacant | 14,309,169 | 15,487,615 | 15,800,089 | 15,547,768 | 14,562,399 |
| Residential (Owner Occupied) | 14,340,321 | 14,779,398 | 15,097,224 | 19,888,512 | 19,657,072 |
| Residential (Rental) | 7,693,593 | 7,767,560 | 7,502,874 | 2,672,009 | 2,626,350 |
| Railroad, Private Cars and Airlines | 1,285,502 | 1,009,798 | 943,516 | 746,691 | 605,301 |
| Historical Property | | 19,900 | 19,900 | 19,927 | 13,768 |
| Total | <u>\$ 62,301,589</u> | <u>\$ 65,337,093</u> | <u>\$ 67,794,559</u> | <u>\$ 67,750,110</u> | <u>\$ 68,561,284</u> |
| Estimated Actual Value (Full Cash Value) | \$ 479,764,781 | \$ 501,373,464 | \$ 517,905,820 | \$ 528,541,138 | \$ 558,455,503 |
| Ratio of Primary Assessed Value to Estimated Actual Value | 13% | 13% | 13% | 13% | 12% |
| Total Direct Rate | \$ 8.48 | \$ 4.75 | \$ 6.09 | \$ 5.07 | \$ 3.78 |

| <u>Class</u> | <u>2010</u> | <u>2009</u> |
|--------------------------------------------------|----------------------|-------------------|
| Commercial, Industrial, Utilities and Mining | \$ 31,490,709 | 29,508,410 |
| Agricultural and Vacant | 11,371,851 | 11,109,763 |
| Residential (Owner Occupied) | 18,440,059 | 16,847,433 |
| Residential (Rental) | 2,444,859 | 2,199,995 |
| Railroad, Private Cars and Airlines | 538,846 | 586,199 |
| Historical Property | 13,434 | 12,524 |
| Total | <u>\$ 64,299,758</u> | <u>60,264,324</u> |
| Estimated Actual Value (Full Cash Value) | \$ 459,765,660 | 431,958,712 |
| Ratio of Primary Value to Estimated Actual Value | 14% | 14% |
| Total Direct Rate | \$ 3.72 | \$ 3.93 |

Source: The source of this information is the State and County Abstract of the Assessment Roll, Arizona Department of Revenue.

Note: The primary assessed value generates revenues for general District operations.

**WILLCOX UNIFIED SCHOOL DISTRICT NO. 13
SECONDARY ASSESSED VALUE OF TAXABLE PROPERTY BY CLASS
LAST SEVEN FISCAL YEARS**

| <u>Class</u> | <u>Fiscal Year</u> | | | | |
|-------------------------------------------------------------|----------------------|----------------------|----------------------|----------------------|----------------------|
| | <u>2015</u> | <u>2014</u> | <u>2013</u> | <u>2012</u> | <u>2011</u> |
| Commercial, Industrial, Utilities and Mining | \$ 24,701,288 | \$ 26,350,806 | \$ 28,562,156 | \$ 29,079,040 | \$ 31,441,764 |
| Agricultural and Vacant | 14,550,823 | 16,241,295 | 17,556,621 | 18,795,343 | 21,643,921 |
| Residential (Owner Occupied) | 14,369,228 | 14,831,517 | 15,201,714 | 20,222,131 | 21,105,799 |
| Residential (Rental) | 7,711,404 | 7,806,603 | 7,593,841 | 2,744,194 | 2,716,130 |
| Railroad, Private Cars and Airlines | 1,295,435 | 1,017,568 | 957,635 | 814,495 | 694,713 |
| Historical Property | <u>19,900</u> | <u>19,900</u> | <u>19,900</u> | <u>19,987</u> | <u>13,768</u> |
| Total | <u>\$ 62,648,078</u> | <u>\$ 66,267,689</u> | <u>\$ 69,891,867</u> | <u>\$ 71,675,190</u> | <u>\$ 77,616,095</u> |
| Ratio of Secondary Assessed Value to Estimated Actual Value | 13% | 13% | 13% | 14% | 14% |
| Total Direct Rate | \$ 8.48 | \$ 4.75 | \$ 6.09 | \$ 5.07 | \$ 3.78 |

| <u>Class</u> | <u>2010</u> | <u>2009</u> |
|-------------------------------------------------------------|----------------------|-------------------|
| Commercial, Industrial, Utilities and Mining | \$ 31,788,401 | 30,128,704 |
| Agricultural and Vacant | 11,788,004 | 11,663,311 |
| Residential (Owner Occupied) | 18,827,108 | 17,741,796 |
| Residential (Rental) | 2,491,653 | 2,325,059 |
| Railroad, Private Cars and Airlines | 606,686 | 634,382 |
| Historical Property | <u>13,499</u> | <u>13,028</u> |
| Total | <u>\$ 65,515,351</u> | <u>62,506,280</u> |
| Ratio of Secondary Assessed Value to Estimated Actual Value | 14% | 14% |
| Total Direct Rate | \$ 3.72 | \$ 3.93 |

Source: The source of this information is the State and County Abstract of the Assessment Roll, Arizona Department of Revenue.

Note: The secondary assessed value generates revenues to service District bonded debt requirements and other voter-approved overrides.

**WILLCOX UNIFIED SCHOOL DISTRICT NO. 13
PROPERTY TAX ASSESSMENT RATIOS
LAST SEVEN FISCAL YEARS**

| <u>Class</u> | <u>Fiscal Year</u> | | | | |
|----------------------------------------------|--------------------|-------------|-------------|-------------|-------------|
| | <u>2015</u> | <u>2014</u> | <u>2013</u> | <u>2012</u> | <u>2011</u> |
| Commercial, Industrial, Utilities and Mining | 19 % | 20 % | 20 % | 20 % | 21 % |
| Agricultural and Vacant | 16 | 16 | 16 | 16 | 16 |
| Residential (Owner Occupied) | 10 | 10 | 10 | 10 | 10 |
| Residential (Rental) | 10 | 10 | 10 | 10 | 10 |
| Railroad, Private Cars and Airlines | 16 | 15 | 15 | 15 | 17 |

| <u>Class</u> | <u>2010</u> | <u>2009</u> |
|----------------------------------------------|-------------|-------------|
| Commercial, Industrial, Utilities and Mining | 22 % | 23 % |
| Agricultural and Vacant | 16 | 16 |
| Residential (Owner Occupied) | 10 | 10 |
| Residential (Rental) | 10 | 10 |
| Railroad, Private Cars and Airlines | 18 | 20 |

Source: The source of this information is the State and County Abstract of the Assessment Roll, Arizona Department of Revenue.

Note: Additional classes of property exist, but do not amount to a significant portion of the District's total valuation, therefore they are not included on this schedule.

**WILLCOX UNIFIED SCHOOL DISTRICT NO. 13
DIRECT AND OVERLAPPING PROPERTY TAX RATES
LAST SEVEN FISCAL YEARS**

| Fiscal Year Ended June 30 | Overlapping Rates | | | | | | | | | |
|----------------------------------------------|-------------------------------|---------------|------------------------------------|---------------------------------------|-------------------------------------------|-----------------------------------------|--------------------------------|------------------------------|------------------|--------------|
| | State Equalization | County | County Free Library | Flood Control District | Community College District | Fire District Assistance | City of Willcox | District Direct Rates | | |
| | | | | | | | | Primary | Secondary | Total |
| 2015 | 0.51 | 2.63 | 0.15 | 0.26 | 2.03 | 0.10 | 1.11 | 6.16 | 2.32 | 8.48 |
| 2014 | 0.51 | 2.63 | 0.15 | 0.26 | 1.85 | 0.09 | 1.06 | 1.96 | 2.79 | 4.75 |
| 2013 | 0.47 | 2.63 | 0.15 | 0.26 | 1.73 | 0.09 | 1.01 | 4.16 | 1.92 | 6.09 |
| 2012 | 0.43 | 2.63 | 0.15 | 0.26 | 1.67 | 0.08 | 1.00 | 4.21 | 0.86 | 5.07 |
| 2011 | 0.36 | 2.63 | 0.15 | 0.26 | 1.60 | 0.08 | 0.97 | 2.96 | 0.82 | 3.78 |
| 2010 | 0.33 | 2.64 | 0.15 | 0.26 | 1.61 | 0.09 | 0.94 | 2.74 | 0.98 | 3.72 |
| 2009 | 0.00 | 2.68 | 0.15 | 0.26 | 1.66 | 0.08 | 1.02 | 2.87 | 1.06 | 3.93 |

Source: The source of this information is the Property Tax Rates and Assessed Values, Arizona Tax Research Foundation.

**WILLCOX UNIFIED SCHOOL DISTRICT NO. 13
PRINCIPAL PROPERTY TAXPAYERS
CURRENT FISCAL YEAR AND FISCAL YEAR SIX YEARS PRIOR**

| <u>Taxpayer</u> | <u>2015</u> | | <u>2009</u> | |
|---------------------------------------------|---------------------------------------------|--------------------------------------------------------------------|---------------------------------------------|--------------------------------------------------------------------|
| | <u>Secondary Assessed Valuation</u> | <u>Percentage of District's Net Assessed Valuation</u> | <u>Secondary Assessed Valuation</u> | <u>Percentage of District's Net Assessed Valuation</u> |
| Sulphur Springs Valley Electric Co-Op, Inc. | \$ 5,932,077 | 9.47 % | \$ 4,099,165 | 6.56 % |
| Kinder Morgan | 5,232,768 | 8.35 | 6,996,444 | 11.19 |
| Riverview LLP DBA Coronado Farms LLP | 1,809,272 | 2.89 | | |
| Union Pacific | 1,269,498 | 2.03 | | |
| Valley Telephone Co-Op | 1,091,004 | 1.74 | 2,262,552 | 3.62 |
| Unisource Energy Corporation | 809,083 | 1.29 | 883,184 | 1.41 |
| Valley Connections LLC | 769,263 | 1.23 | 1,292,092 | 2.07 |
| Chase Farms | 756,875 | 1.21 | | |
| HPT TA Properties | 724,225 | 1.16 | 1,037,496 | 1.66 |
| Emerald Hotel One LLC | 621,233 | 0.99 | | |
| Sebastiao & Maria Faria | | | 1,555,420 | 2.49 |
| Inde Motorsport Ranch LLC | | | | |
| Willcox Greenhouse LLC | | | | |
| Southwest Hotel, Inc. | | | | |
| MAA Willcox Hospitality, LLC | | | | |
| SFPP LP | | | 1,939,311 | 3.10 |
| Southwest Gas Corporation | | | 729,965 | 1.17 |
| Qwest Corporation | | | 697,512 | 1.12 |
| Total | <u>\$ 19,015,298</u> | <u>30.35 %</u> | <u>\$ 21,493,141</u> | <u>34.39 %</u> |

Source: The source of this information is the Cochise County Assessor's records.

**WILLCOX UNIFIED SCHOOL DISTRICT NO. 13
PROPERTY TAX LEVIES AND COLLECTIONS
LAST SEVEN FISCAL YEARS**

| Fiscal Year Ended June 30 | Taxes Levied for the Fiscal Year | Collected within the Fiscal Year of the Levy | | Collections in Subsequent Fiscal Years | Collected to the End of the Current Fiscal Year | |
|----------------------------------------------|-------------------------------------------------|---------------------------------------------------------|-------------------------------|-------------------------------------------------------|------------------------------------------------------------|-------------------------------|
| | | Amount | Percentage of Levy | | Amount | Percentage of Levy |
| 2015 | \$ 4,989,287 | \$ 4,612,870 | 92.46 % | \$ | \$ 4,612,870 | 92.46 % |
| 2014 | 3,002,667 | 2,748,378 | 91.53 | 224,804 | 2,973,182 | 99.02 |
| 2013 | 3,729,991 | 3,428,988 | 91.93 | 258,778 | 3,687,766 | 98.87 |
| 2012 | 3,015,639 | 2,835,089 | 94.01 | 162,023 | 2,997,112 | 99.39 |
| 2011 | 2,310,962 | 2,181,857 | 94.41 | 119,337 | 2,301,194 | 99.58 |
| 2010 | 2,100,231 | 1,974,045 | 93.99 | 121,281 | 2,095,326 | 99.77 |
| 2009 | 2,122,964 | 2,010,803 | 94.72 | 107,476 | 2,118,279 | 99.78 |

Source: The source of this information is the 2015 Cochise County Treasurer's records.

Notes: 1) Amounts collected are on a cash basis.

2) Unsecured personal property taxes are not included in this schedule because the dates of the monthly rolls vary each year. On the average, 90% of unsecured property taxes are collected within 90 days after the due date.

**WILLCOX UNIFIED SCHOOL DISTRICT NO. 13
OUTSTANDING DEBT BY TYPE
LAST SEVEN FISCAL YEARS**

| Fiscal Year Ended June 30 | General Obligation Bonds | | | | | Total Outstanding Debt | | | | |
|------------------------------------|--------------------------------|-------------------------------------------------|---------------|-----------------------------------------------------------------|---------------|------------------------|---------------|-----------------------------------------------------------------|---------------|-------------------------------------|
| | General Obligation Bonds | Less: Amounts Restricted for Principal | Total | Percentage of Estimated Actual Value (Full Cash Value) | Per Capita | Capital Leases | Total | Percentage of Estimated Actual Value (Full Cash Value) | Per Capita | Percentage of Personal Income |
| 2015 | \$ 11,581,219 | \$ 241,758 | \$ 11,339,461 | 2.36 % | \$ 3,071 | \$ 1,248,350 | \$ 12,829,569 | 2.67 % | \$ 3,475 | 0.27 % |
| 2014 | 12,196,659 | 413,517 | 11,783,142 | 2.35 | 3,207 | 1,358,259 | 13,554,918 | 2.70 | 3,689 | 0.29 |
| 2013 | 7,442,036 | 40,097 | 7,401,939 | 1.43 | 2,005 | 1,469,586 | 8,911,622 | 1.72 | 2,414 | 0.18 |
| 2012 | 7,442,036 | 106,815 | 7,335,221 | 1.39 | 1,997 | 1,421,272 | 8,863,308 | 1.68 | 2,412 | 0.19 |
| 2011 | | | | | | | | | | |
| 2010 | | | | | | 38,563 | 38,563 | 0.01 | 10 | 0.00 |
| 2009 | | | | | | 75,116 | 75,116 | 0.02 | 20 | 0.00 |

Source: The source of this information is the District's financial records.

**WILLCOX UNIFIED SCHOOL DISTRICT NO. 13
DIRECT AND OVERLAPPING GOVERNMENTAL ACTIVITIES DEBT
JUNE 30, 2015**

| <u>Governmental Unit</u> | <u>Debt Outstanding</u> | <u>Estimated Percentage Applicable to School District</u> | <u>Estimated Amount Applicable to School District</u> |
|-----------------------------------------------------------|-----------------------------|-----------------------------------------------------------------------|-------------------------------------------------------------------|
| Overlapping: | | | |
| City of Willcox | \$ 126,041 | 100.00 % | 126,041 |
| Direct: | | | |
| Willcox Unified School District No. 13 | 12,829,569 | 100.00 | <u>12,829,569</u> |
| Total Direct and Overlapping Governmental Activities Debt | | | <u><u>\$ 12,955,610</u></u> |

DIRECT AND OVERLAPPING GENERAL BONDED DEBT RATIOS

| | | |
|-------------------------------------------------------------|----------|---------|
| Net Direct General Obligation Bonded Debt | | |
| As a Percentage of Net Secondary Assessed Valuation | | 17.48 % |
| Net Direct and Overlapping General Bonded Debt | | |
| Per Capita | \$ 3,000 | |
| As a Percentage of Net Secondary Assessed Valuation | | 17.68 % |
| As a Percentage of Estimated Actual Value (Full Cash Value) | | 2.31 % |

Source: The source of this information is the District's records and the State and County Abstract of the Assessment Roll, Arizona Department of Revenue and the applicable governmental unit.

- Notes:**
- 1) Estimated percentage of debt outstanding applicable to the District is calculated based on the District's secondary assessed valuation as a percentage of the secondary assessed valuation of the overlapping jurisdiction.
 - 2) Outstanding debt as of June 30, 2014 is presented for the overlapping governments as this is the most recent available information.

**WILLCOX UNIFIED SCHOOL DISTRICT NO. 13
LEGAL DEBT MARGIN INFORMATION
LAST SEVEN FISCAL YEARS**

Class B Bond Legal Debt Margin Calculation for Fiscal Year 2015:

| | |
|------------------------------------|---------------------|
| Secondary assessed valuation | \$ 62,648,078 |
| Debt limit (20% of assessed value) | 12,529,616 |
| Debt applicable to limit | <u>11,200,000</u> |
| Legal debt margin | <u>\$ 1,329,616</u> |

Total Legal Debt Margin Calculation for Fiscal Year 2015:

| | |
|------------------------------------|---------------------|
| Secondary assessed valuation | \$ 62,648,078 |
| Debt limit (30% of assessed value) | 18,794,423 |
| Debt applicable to limit | <u>11,200,000</u> |
| Legal debt margin | <u>\$ 7,594,423</u> |

Fiscal Year Ended June 30

| | <u>2015</u> | <u>2014</u> | <u>2013</u> | <u>2012</u> | <u>2011</u> |
|-------------------------------------------------------------------------|---------------------|---------------------|----------------------|----------------------|----------------------|
| Debt Limit | \$ 18,794,423 | \$ 19,880,307 | \$ 20,967,560 | \$ 21,502,557 | \$ 23,284,829 |
| Total net debt applicable to limit | <u>11,200,000</u> | <u>11,800,000</u> | <u>7,195,000</u> | <u>7,195,000</u> | <u></u> |
| Legal debt margin | <u>\$ 7,594,423</u> | <u>\$ 8,080,307</u> | <u>\$ 13,772,560</u> | <u>\$ 14,307,557</u> | <u>\$ 23,284,829</u> |
| Total net debt applicable to the limit as a percentage of debt limit | 60% | 59% | 34% | 33% | 0% |

| | <u>2010</u> | <u>2009</u> |
|-------------------------------------------------------------------------|----------------------|----------------------|
| Debt Limit | \$ 19,654,605 | \$ 18,751,884 |
| Total net debt applicable to limit | <u></u> | <u></u> |
| Legal debt margin | <u>\$ 19,654,605</u> | <u>\$ 18,751,884</u> |
| Total net debt applicable to the limit as a percentage of debt limit | 0% | 0% |

Source: The source of this information is the District's financial records.

- Notes:** 1) The District's general obligation bonds are subject to two limits; the Constitutional debt limit (total debt limit) on all general obligation bonds and the statutory debt limit on Class B bonds. The calculations of the debt margins are presented in detail for the current fiscal year only.
- 2) Bond premium is not subject to the statutory debt limit.

**WILLCOX UNIFIED SCHOOL DISTRICT NO. 13
COUNTY-WIDE DEMOGRAPHIC AND ECONOMIC STATISTICS
LAST SEVEN CALENDAR YEARS**

| <u>Year</u> | <u>Population</u> | <u>Personal Income (thousands)</u> | <u>Per Capita Income</u> | <u>Unemployment Rate</u> | <u>Estimated District Population</u> |
|-------------|-------------------|--------------------------------------------|------------------------------|------------------------------|----------------------------------------------|
| 2014 | 129,628 | \$ 4,679,941 | \$ 127,448 | 8.4 % | 3,692 |
| 2013 | 130,906 | 4,740,219 | 36,612 | 8.8 | 3,674 |
| 2012 | 130,752 | 4,837,759 | 36,467 | 8.2 | 3,692 |
| 2011 | 130,537 | 4,763,499 | 35,738 | 8.8 | 3,674 |
| 2010 | 142,000 | 4,688,309 | 35,592 | 8.0 | 3,692 |
| 2009 | 140,263 | 4,435,021 | 34,243 | 7.4 | 3,761 |
| 2008 | 139,434 | 4,271,255 | 33,259 | 5.6 | 3,771 |

Sources: The source of the "Personal Income" and "Per Capita" information is the Bureau of Economic Analysis. The source of the "Population" and "Unemployment Rate" information from 2008 through 2010 is the University of Arizona, Eller College of Management, Economic and Business Research Center. For 2011 through 2014, the source of the information is the Arizona Office of Employment and Population Statistics.

**WILLCOX UNIFIED SCHOOL DISTRICT NO. 13
PRINCIPAL EMPLOYERS
CURRENT FISCAL YEAR AND FISCAL YEAR SIX YEARS PRIOR**

| <u>Employer</u> | <u>2015</u> | | <u>2009</u> | |
|---------------------------------------|------------------|-----------------------------------------------|------------------|-----------------------------------------------|
| | <u>Employees</u> | <u>Percentage of Total Employment</u> | <u>Employees</u> | <u>Percentage of Total Employment</u> |
| Nature Sweet | 380 | 22.89 % | 793 | 49.56 % |
| US Customs & Border Patrol | 250 | 15.06 | 117 | 7.31 |
| Northern Cochise Community Hospital | 171 | 10.30 | 117 | 7.31 |
| Willcox Unified School District | 155 | 9.34 | 183 | 11.44 |
| Valley Telecom Group | 79 | 4.76 | 99 | 6.19 |
| Sulpher Springs Valley Electric Co-op | 70 | 4.22 | 60 | 3.75 |
| Safeway Stores | 65 | 3.92 | 55 | 3.44 |
| City of Willcox | 55 | 3.31 | 69 | 4.31 |
| Travel Centers | 50 | 3.01 | | |
| Cochise County | 50 | 3.01 | 40 | 2.50 |
| Simflo | | | 30 | 1.88 |
| Total | <u>1,325</u> | <u>79.82 %</u> | <u>1,563</u> | <u>97.69 %</u> |
| Total employment | <u>1,660</u> | | <u>1,600</u> | |

Source: The source of this information is Cochise College for Economic Research and other related sources.

**WILLCOX UNIFIED SCHOOL DISTRICT NO. 13
 FULL-TIME EQUIVALENT DISTRICT EMPLOYEES BY TYPE
 LAST SEVEN FISCAL YEARS**

| | Full-time Equivalent Employees as of June 30 | | | | |
|-------------------------------------|-----------------------------------------------------|-------------|-------------|-------------|-------------|
| | <u>2015</u> | <u>2014</u> | <u>2013</u> | <u>2012</u> | <u>2011</u> |
| Supervisory | | | | | |
| Superintendent | 1 | 1 | 1 | 1 | 1 |
| Principals | 3 | 3 | 3 | 3 | 3 |
| Assistant principals | 1 | 1 | 1 | | |
| Total supervisory | <u>5</u> | <u>5</u> | <u>5</u> | <u>4</u> | <u>4</u> |
| Instruction | | | | | |
| Teachers | 63 | 78 | 80 | 86 | 86 |
| Other professionals (instructional) | 2 | 2 | 2 | 2 | 2 |
| Aides | 30 | 30 | 34 | 37 | 36 |
| Total instruction | <u>95</u> | <u>110</u> | <u>116</u> | <u>125</u> | <u>124</u> |
| Student Services | | | | | |
| Nurses | 1 | 1 | 1 | 1 | 1 |
| Counselors/Advisors | 1 | 1 | 2 | 3 | 3 |
| Librarians | 2 | 2 | 2 | 2 | 2 |
| Technicians | 2 | 1 | 1 | 1 | 2 |
| Total student services | <u>6</u> | <u>5</u> | <u>6</u> | <u>7</u> | <u>8</u> |
| Support and Administration | | | | | |
| Clerical workers | 20 | 14 | 14 | 14 | 14 |
| Maintenance workers | 11 | 10 | 10 | 10 | 10 |
| Bus Drivers | 10 | 9 | 10 | 7 | 7 |
| Food Service workers | 1 | 1 | 1 | 2 | 2 |
| Other classified | 2 | 1 | 1 | 1 | 1 |
| Total support and administration | <u>44</u> | <u>35</u> | <u>36</u> | <u>34</u> | <u>34</u> |
| Total | <u>150</u> | <u>155</u> | <u>163</u> | <u>170</u> | <u>170</u> |

(Continued)

**WILLCOX UNIFIED SCHOOL DISTRICT NO. 13
FULL-TIME EQUIVALENT DISTRICT EMPLOYEES BY TYPE
LAST SEVEN FISCAL YEARS**

| | <u>2010</u> | <u>2009</u> |
|-------------------------------------|-------------|-------------|
| Supervisory | | |
| Superintendent | 1 | 1 |
| Principals | 3 | 3 |
| Assistant principals | | |
| Total supervisory | 4 | 4 |
| Instruction | | |
| Teachers | 83 | 94 |
| Other professionals (instructional) | | 2 |
| Aides | 38 | 34 |
| Total instruction | 121 | 130 |
| Student Services | | |
| Nurses | 2 | 3 |
| Counselors/Advisors | 3 | 3 |
| Librarians | 3 | 3 |
| Technicians | 3 | 1 |
| Total student services | 11 | 10 |
| Support and Administration | | |
| Clerical workers | 14 | 16 |
| Maintenance workers | 12 | 12 |
| Bus Drivers | 8 | 8 |
| Food Service workers | 2 | 2 |
| Other classified | 1 | 1 |
| Total support and administration | 37 | 39 |
| Total | 173 | 183 |

Source: The source of this information is District personnel records.

(Concluded)

**WILLCOX UNIFIED SCHOOL DISTRICT NO. 13
OPERATING STATISTICS
LAST SEVEN FISCAL YEARS**

| Fiscal Year Ended June 30 | Average Daily Membership | Operating Expenditures | Cost per Pupil | Percentage Change | Expenses | Cost per Pupil | Percentage Change | Teaching Staff | Pupil-Teacher Ratio | Percentage of Free/Reduced Students |
|----------------------------------|---------------------------------|-------------------------------|-----------------------|--------------------------|-----------------|-----------------------|--------------------------|-----------------------|----------------------------|--------------------------------------------|
| 2015 | 1,070 | \$ 9,128,969 | \$ 8,536 | 5.58 % | \$ 10,690,291 | \$ 9,995 | 1.96 % | 63 | 17.0 | 78.7 % |
| 2014 | 1,106 | 8,942,434 | 8,085 | (1.39) | 10,843,082 | 9,803 | (6.63) | 78 | 14.2 | 67.0 |
| 2013 | 1,129 | 9,259,338 | 8,199 | 1.67 | 11,857,752 | 10,499 | (2.60) | 80 | 14.1 | 75.6 |
| 2012 | 1,158 | 9,341,034 | 8,064 | (0.16) | 12,486,150 | 10,779 | 21.28 | 86 | 13.5 | 56.4 |
| 2011 | 1,206 | 9,737,542 | 8,077 | 1.99 | 10,714,665 | 8,887 | 0.03 | 86 | 14.0 | 67.7 |
| 2010 | 1,240 | 9,819,753 | 7,919 | N/A | 11,017,150 | 8,885 | (6.56) | 83 | 14.9 | 63.7 |
| 2009 | 1,178 | 9,993,348 | 8,486 | #N/A | 11,197,035 | 9,509 | N/A | 94 | 12.5 | 78.1 |

Source: The source of this information is the District's financial records.

Note: Operating expenditures are total expenditures less debt service and capital outlay.

**WILLCOX UNIFIED SCHOOL DISTRICT NO. 13
CAPITAL ASSETS INFORMATION
LAST SEVEN FISCAL YEARS**

| | Fiscal Year Ended June 30 | | | | | | |
|------------------------------|----------------------------------|--------------------|--------------------|--------------------|--------------------|--------------------|--------------------|
| | <u>2015</u> | <u>2014</u> | <u>2013</u> | <u>2012</u> | <u>2011</u> | <u>2010</u> | <u>2009</u> |
| <u>Schools</u> | | | | | | | |
| Elementary | | | | | | | |
| Buildings | 7 | 7 | 7 | 7 | 7 | 7 | 7 |
| Square feet | 54,896 | 54,896 | 54,896 | 54,896 | 54,896 | 54,896 | 54,896 |
| Capacity | 646 | 646 | 646 | 646 | 646 | 646 | 646 |
| Enrollment | 410 | 399 | 415 | 419 | 451 | 457 | 423 |
| Middle | | | | | | | |
| Buildings | 9 | 9 | 9 | 8 | 8 | 8 | 8 |
| Square feet | 52,693 | 52,693 | 52,693 | 51,143 | 51,143 | 51,143 | 51,143 |
| Capacity | 570 | 570 | 570 | 553 | 553 | 553 | 553 |
| Enrollment | 341 | 352 | 364 | 363 | 362 | 353 | 334 |
| High | | | | | | | |
| Buildings | 21 | 21 | 21 | 20 | 20 | 20 | 20 |
| Square feet | 110,470 | 110,470 | 110,470 | 80,881 | 80,881 | 80,881 | 80,881 |
| Capacity | 852 | 852 | 852 | 622 | 622 | 622 | 622 |
| Enrollment | 404 | 366 | 352 | 385 | 410 | 435 | 431 |
| Other | | | | | | | |
| Buildings | 7 | 6 | 6 | 6 | 6 | 6 | 6 |
| Square feet | 28,931 | 13,867 | 13,867 | 13,867 | 13,867 | 13,867 | 13,867 |
| Capacity | 150 | 150 | 150 | 150 | 150 | 150 | 150 |
| <u>Administrative</u> | | | | | | | |
| Buildings | 1 | 1 | 1 | 1 | 1 | 1 | 1 |
| Square feet | 4,340 | 4,340 | 4,340 | 4,340 | 4,340 | 4,340 | 4,340 |
| <u>Transportation</u> | | | | | | | |
| Garages | 1 | 1 | 1 | 1 | 1 | 1 | 1 |
| Buses | 18 | 18 | 18 | 14 | 14 | 14 | 14 |
| <u>Athletics</u> | | | | | | | |
| Football fields | 2 | 2 | 2 | 2 | 2 | 2 | 2 |
| Soccer fields | 1 | 1 | 1 | 1 | 1 | 1 | 1 |
| Running tracks | 1 | 1 | 1 | 1 | 1 | 1 | 1 |
| Baseball/softball | 3 | 3 | 3 | 3 | 3 | 3 | 3 |
| Playgrounds | 2 | 2 | 2 | 2 | 2 | 2 | 2 |

Source: The source of this information is the District's facilities records.

(This page intentionally left blank)